

Map Area

Source(s): BLM, IPC, ODFW, ODOT, NPS, USDA, USFS, USGS, Ventyx, Esri, DigitalGlobe, GeoEys, Earthstar Geographics, CNES/Airbus DS, AEX, Getmapping, Aerogrid, IGN, IGP, swisstopo

Z:\UtilServ\Boardman_Hemingway\Reports\002_Oregon_Energy_Siting_Council\03_Final ASC\Exhibits\C_Project Location\Maps\Attachment C-3\Index_Morrow.mxd

June 2017

Map Index

Location Map (Map #)

Project Features

- Proposed Route
- Ten-mile Marker



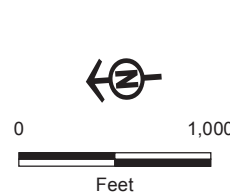
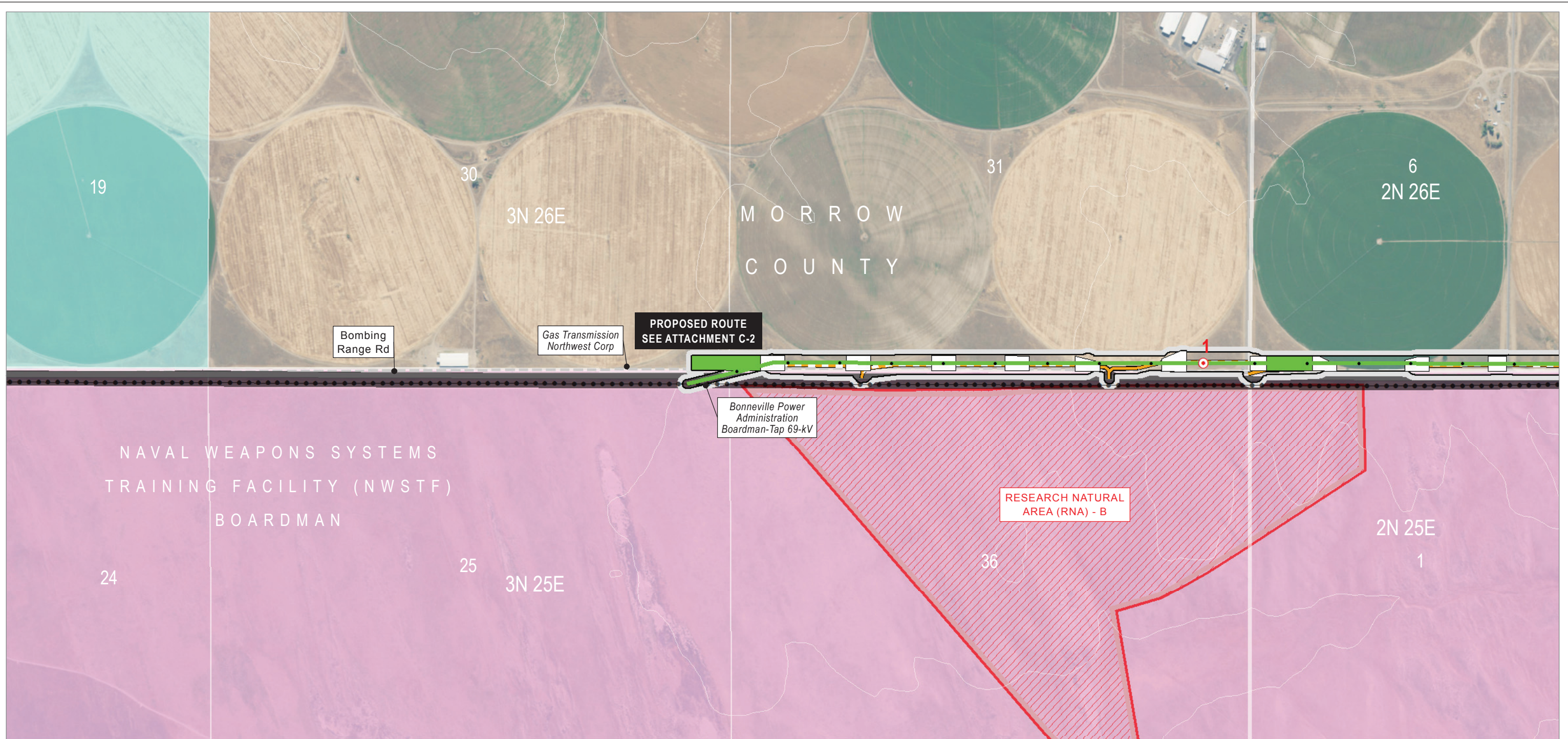
Boardman to Hemingway Transmission Line Project

Attachment C-3
Alternative Location Maps

West of Bombing Range Road
Alternatives 1 and 2
Morrow County

Map Index

This page intentionally left blank.



Source(s): BLM, IPC, ODFW, ODOT, NPS, USDA, USFS, USGS, Ventyx, Esri, DigitalGlobe, GeoEys, Earthstar Geographics, CNES/Airbus DS, AEX, Getmapping, Aerogrid, IGN, IGP, swisstopo

Z:\UtilServ\Boardman_Hemingway\Reports\002_Oregon_Energy_Siting_Council\03_Final ASC\Exhibits\C_Project Location\Maps\Attachment C-3\West of Bombing Range Road 1.mxd

June 2017

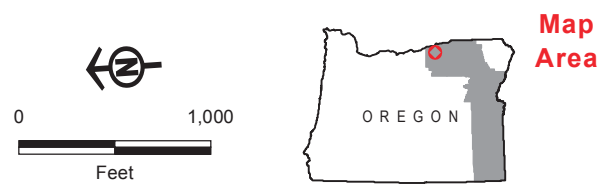
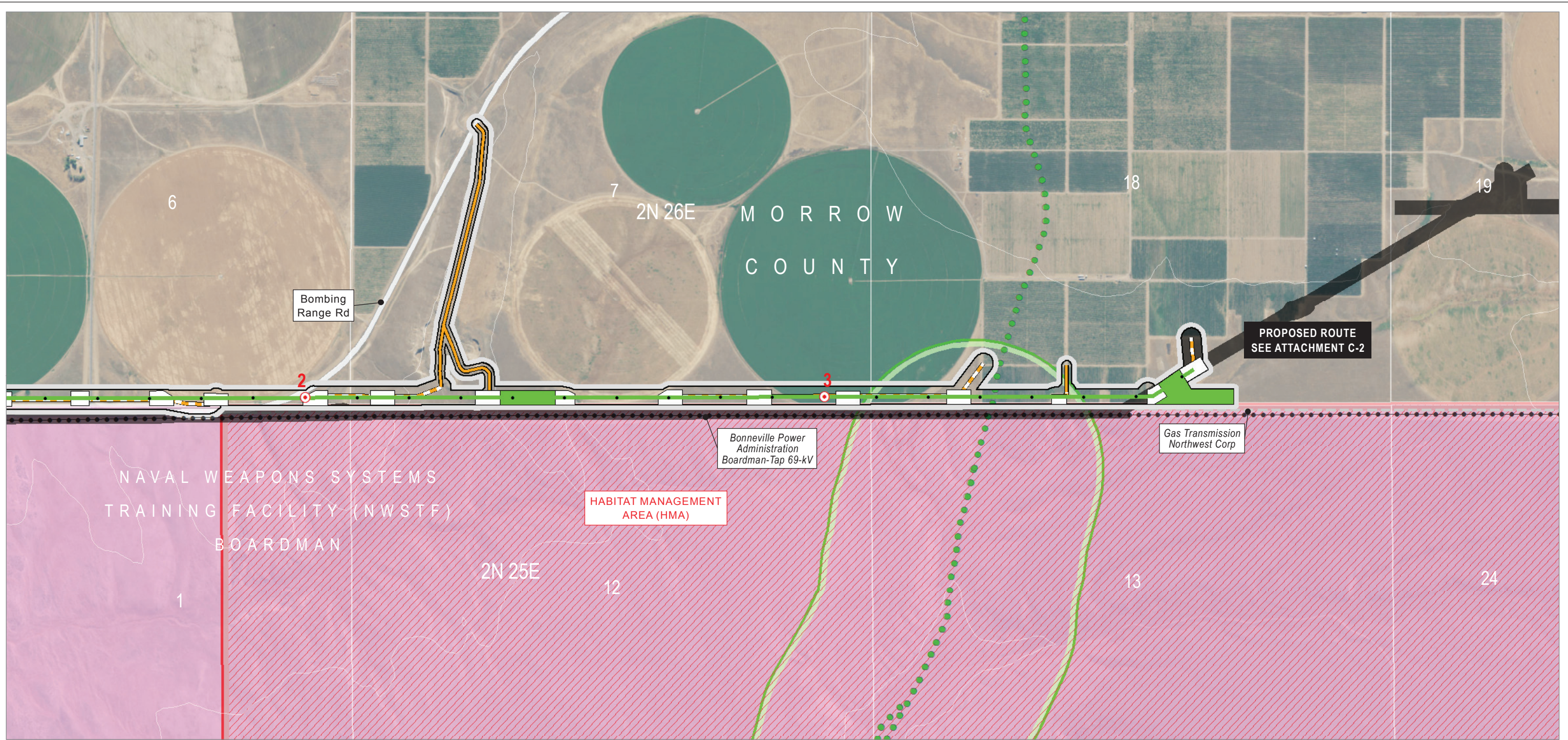
- | | | |
|--|--|---|
| <p>Project Features</p> <p>Site Boundary</p> <ul style="list-style-type: none"> Alternative Proposed Route <p>Route Centerline</p> <ul style="list-style-type: none"> Alternative <p>Mileposts</p> <ul style="list-style-type: none"> Mile Tenth-mile <p>Work Areas</p> <ul style="list-style-type: none"> Pulling and Tensioning | <p>Structure Work Area</p> <p>Access</p> <ul style="list-style-type: none"> Existing Road, Substantial Modification, 21-70% Improvements New Road, Primitive <p>Land Status</p> <ul style="list-style-type: none"> Military Reservation or Corps of Engineers Private State or Local | <p>Important Siting Constraints and Other Features</p> <ul style="list-style-type: none"> 100-foot Contours Existing Transmission Lines Pipeline, Natural Gas Other Major Roads Protected Area (EFSC) |
|--|--|---|

IDAHO POWER
AN IDACORP COMPANY

Boardman to Hemingway
Transmission Line Project

Attachment C-3
Alternative Location Maps
West of Bombing Range Road
Alternative 1
Morrow County

Map 1



Source(s): BLM, IPC, ODFW, ODOT, NPS, USDA, USFS, USGS, Ventyx, Esri, DigitalGlobe, GeoEys, Earthstar Geographics, CNES/Airbus DS, AEX, Getmapping, Aerogrid, IGN, IGP, swisstopo

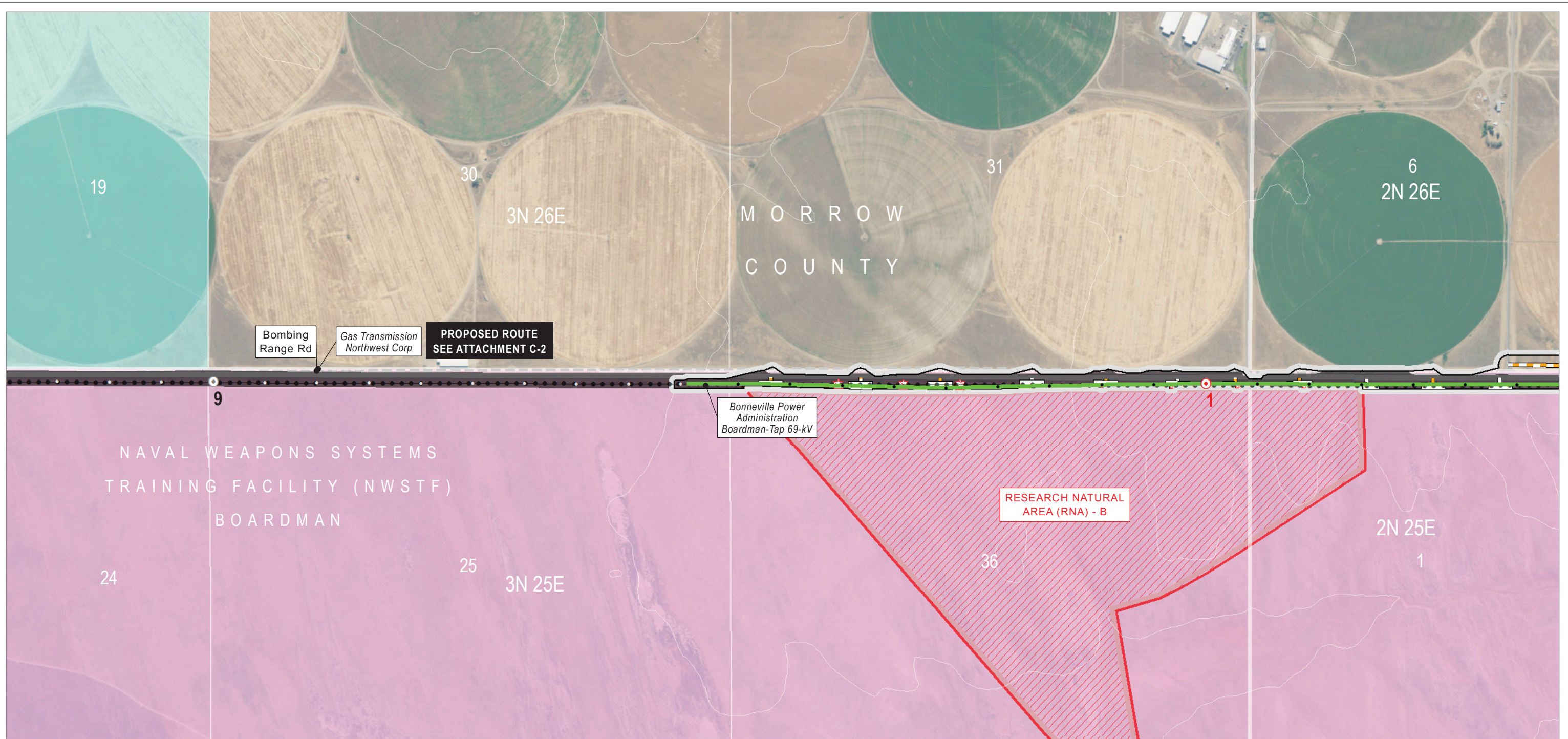
Z:\UtilServ\Boardman_Hemingway\Reports\002_Oregon_Energy_Siting_Council\03_Final_ASCI\Exhibits\C_Project Location\Maps\Attachment C-3\West of Bombing Range Road 1.mxd

June 2017

- | | | |
|--|--|--|
| <p>Project Features</p> <p>Site Boundary</p> <ul style="list-style-type: none"> Alternative Proposed Route <p>Route Centerline</p> <ul style="list-style-type: none"> Alternative <p>Mileposts</p> <ul style="list-style-type: none"> Mile Tenth-mile <p>Work Areas</p> <ul style="list-style-type: none"> Pulling and Tensioning | <p>Structure Work Area</p> <p>Access</p> <ul style="list-style-type: none"> Existing Road, Substantial Modification, 21-70% Improvements New Road, Primitive <p>Land Status</p> <ul style="list-style-type: none"> Military Reservation or Corps of Engineers Private | <p>Important Siting Constraints and Other Features</p> <ul style="list-style-type: none"> 100-foot Contours Existing Transmission Lines Pipeline, Natural Gas Other Major Roads Oregon National Historic Trail (NHT) Oregon NHT Intact Segment (1/4-mile buffer) Protected Area (EFSC) |
|--|--|--|

IDAHO POWER Boardman to Hemingway Transmission Line Project
An IDACORP Company

Attachment C-3
Alternative Location Maps
 West of Bombing Range Road
 Alternative 1
 Morrow County
 Map 2



Source(s): BLM, IPC, ODFW, ODOT, NPS, USDA, USFS, USGS, Ventyx, Esri, DigitalGlobe, GeoEys, Earthstar Geographics, CNES/Airbus DS, AEX, Getmapping, Aerogrid, IGN, IGP, swisstopo

Z:\UtilServ\Boardman_Hemingway\Reports\002_Oregon_Energy_Siting_Council\03_Final ASC\Exhibits\C_Project Location\Maps\Attachment C-3\West of Bombing Range Road 2.mxd

June 2017

Project Features

- Site Boundary
- Alternative
- Proposed Route
- Route Centerline
- Alternative
- Mileposts
 - Mile
 - Tenth-mile
- Work Areas
 - Structure Work Area

- Structure Work Area (Removal Only)
- Access
 - New Road, Primitive
- Land Status
 - Military Reservation or Corps of Engineers
 - Private
 - State or Local

Important Siting Constraints and Other Features

- 100-foot Contours
- Existing Transmission Lines
- Pipeline, Natural Gas
- Other Major Roads
- Protected Area (EFSC)

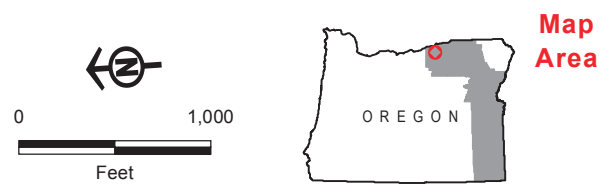
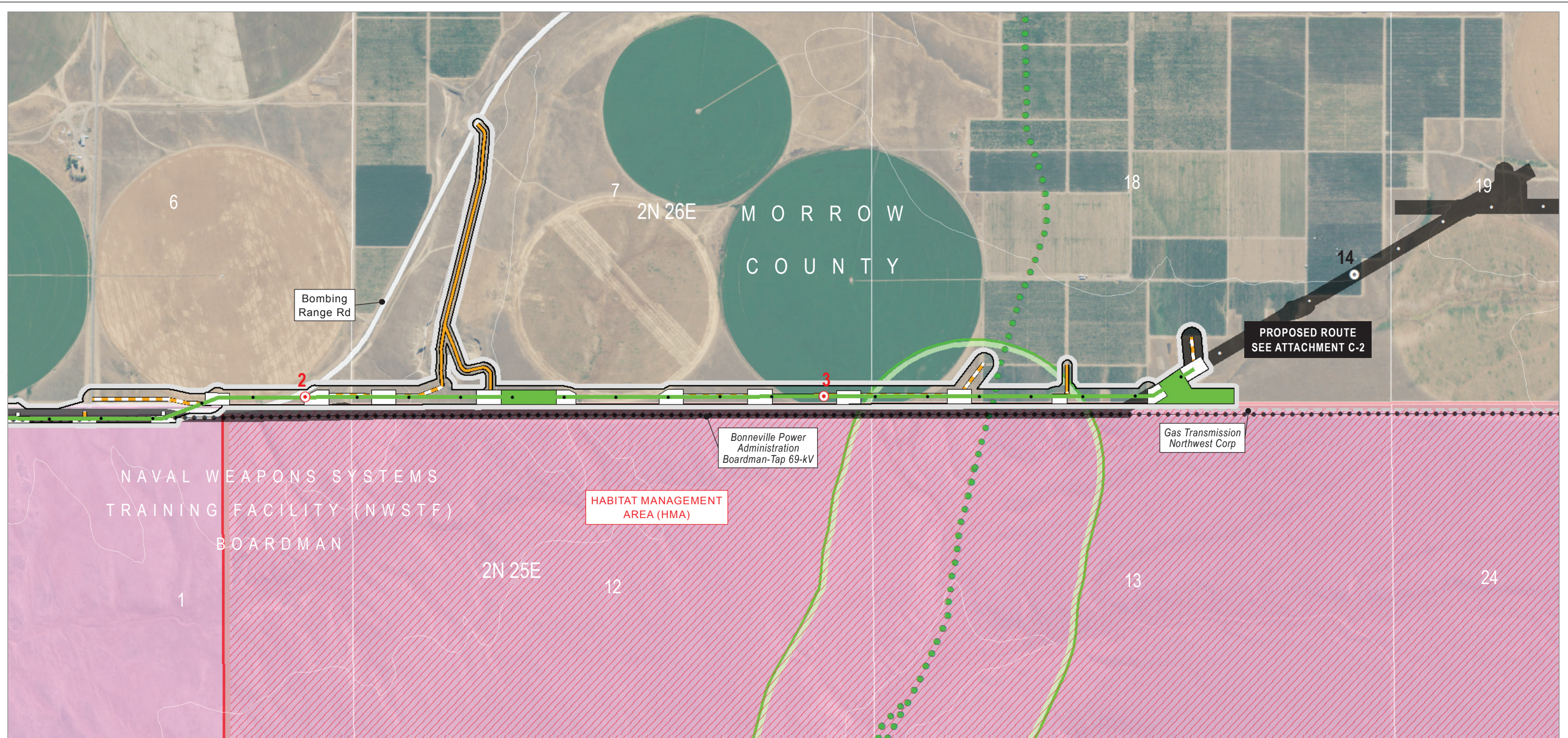
IDAHO POWER
AN IDACORP COMPANY

Boardman to Hemingway
Transmission Line Project

**Attachment C-3
Alternative Location Maps**

West of Bombing Range Road
Alternative 2
Morrow County

Map 3



Source(s): BLM, IPC, ODFW, ODOT, NPS, USDA, USFS, USGS, Ventyx, Esri, DigitalGlobe, GeoEys, Earthstar Geographics, CNES/Airbus DS, AEX, Getmapping, Aerogrid, IGN, IGP, swisstopo

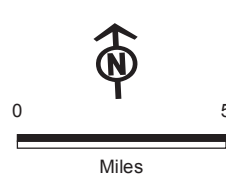
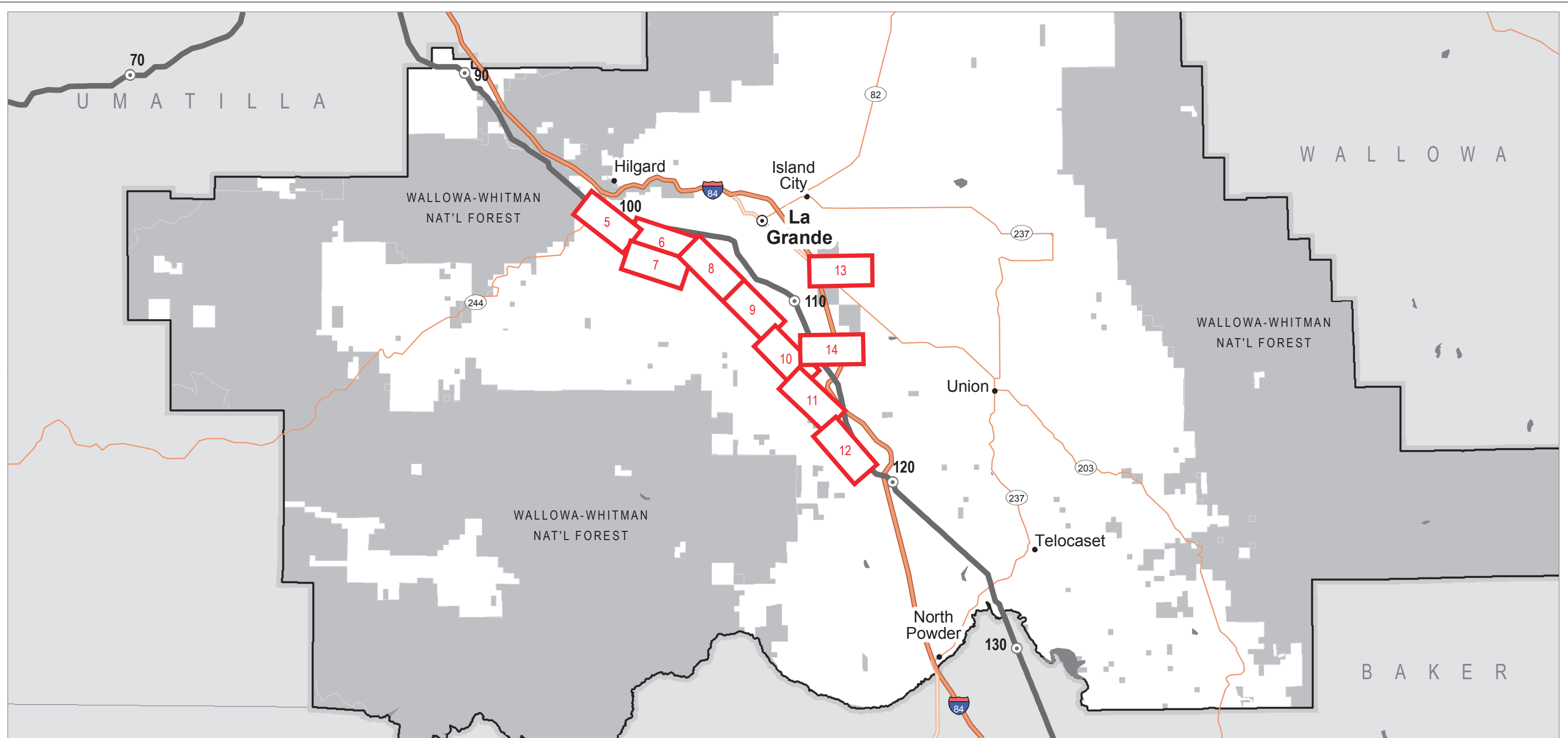
Z:\UtilServ\Boardman_Hemingway\Reports\002_Oregon_Energy_Siting_Council\03_Final ASC\Exhibits\C_Project Location\Maps\Attachment C-3\West of Bombing Range Road 2.mxd

June 2017

- | | | |
|--|--|--|
| <p>Project Features</p> <p>Site Boundary</p> <ul style="list-style-type: none"> Alternative Proposed Route <p>Route Centerline</p> <ul style="list-style-type: none"> Alternative <p>Mileposts</p> <ul style="list-style-type: none"> Mile Tenth-mile <p>Work Areas</p> <ul style="list-style-type: none"> Pulling and Tensioning | <p>Structure Work Area</p> <p>Access</p> <ul style="list-style-type: none"> Existing Road, Substantial Modification, 21-70% Improvements New Road, Primitive <p>Land Status</p> <ul style="list-style-type: none"> Military Reservation or Corps of Engineers Private | <p>Important Siting Constraints and Other Features</p> <ul style="list-style-type: none"> 100-foot Contours Existing Transmission Lines Pipeline, Natural Gas Other Major Roads Oregon National Historic Trail (NHT) Oregon NHT Intact Segment (1/4-mile buffer) Protected Area (EFSC) |
|--|--|--|

IDAHO POWER Boardman to Hemingway Transmission Line Project
AN IDACORP COMPANY

Attachment C-3
Alternative Location Maps
 West of Bombing Range Road
 Alternative 2
 Morrow County
 Map 4



Map Area

Map Index

Location Map (Map #)

Project Features

- Proposed Route
- Ten-mile Marker

IDAHO POWER
An IDACORP Company

Boardman to Hemingway
Transmission Line Project

**Attachment C-3
Alternative Location Maps**

Morgan Lake Alternative
Union County

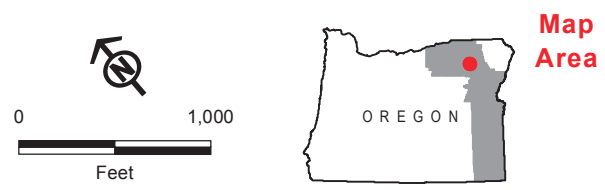
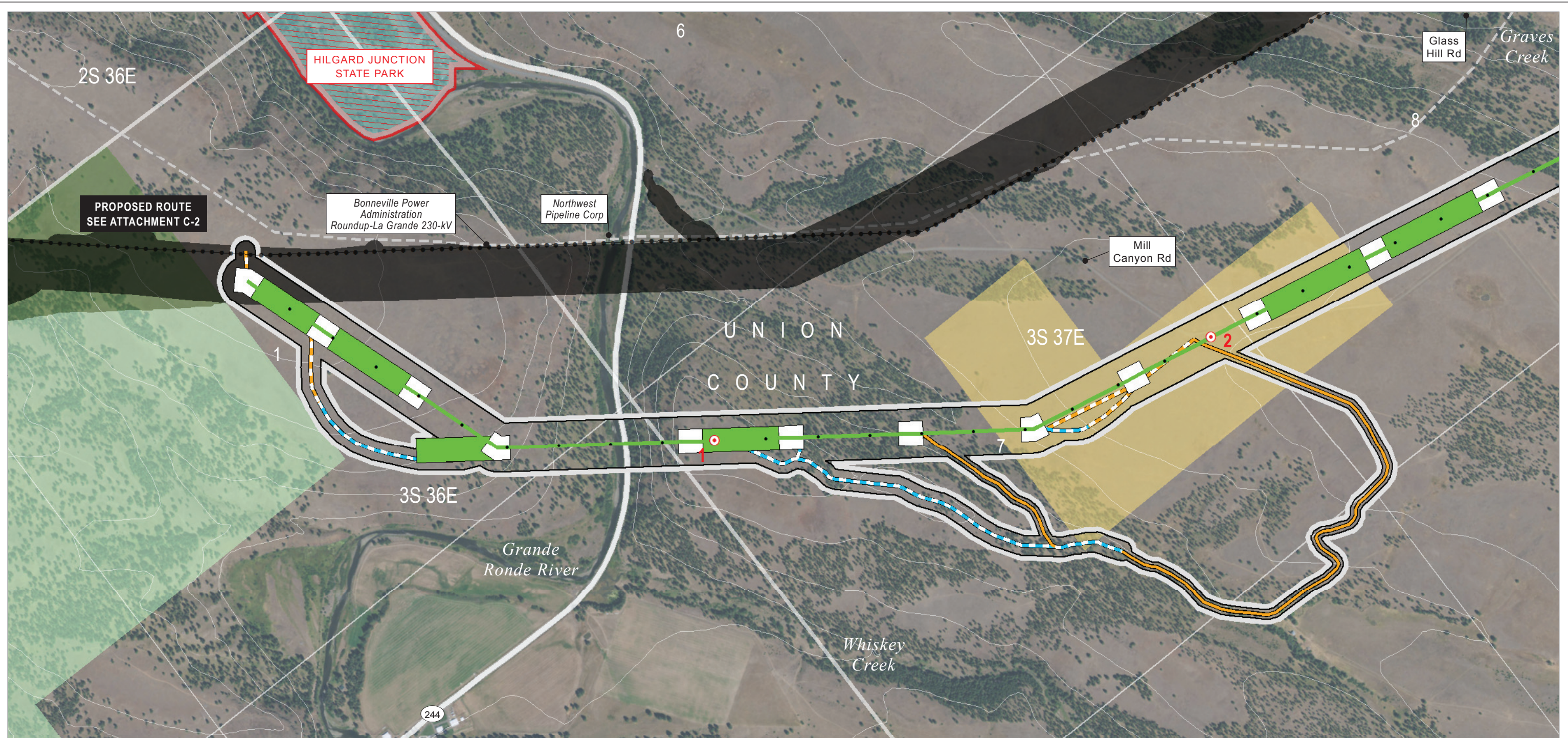
Map Index

Source(s): BLM, IPC, ODFW, ODOT, NPS, USDA, USFS, USGS, Ventyx, Esri, DigitalGlobe, GeoEys, Earthstar Geographics, CNES/Airbus DS, AEX, Getmapping, Aerogrid, IGN, IGP, swisstopo

Z:\UtilServ\Boardman_Hemingway\Reports\002_Oregon_Energy_Siting_Council\03_Final ASC\Exhibits\C_Project Location\Maps\Attachment C-3\Index_Union.mxd

June 2017

This page intentionally left blank.



Source(s): BLM, IPC, ODFW, ODOT, NPS, USDA, USFS, USGS, Ventyx, Esri, DigitalGlobe, GeoEys, Earthstar Geographics, CNES/Airbus DS, AEX, Getmapping, Aerogrid, IGN, IGP, swisstopo

Z:\UtilServ\Boardman_Hemingway\Reports\002_Oregon_Energy_Siting_Council\03_Final ASC\Exhibits\C_Project Location\Maps\Attachment C-3\Morgan Lake.mxd

June 2017

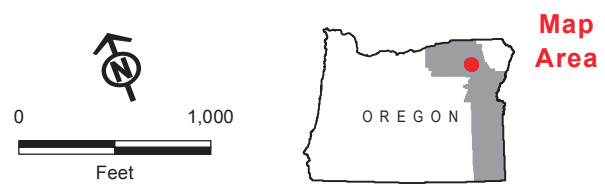
<p>Project Features</p> <p>Site Boundary</p> <ul style="list-style-type: none"> Alternative Proposed Route <p>Route Centerline</p> <ul style="list-style-type: none"> Alternative <p>Mileposts</p> <ul style="list-style-type: none"> Mile Tenth-mile <p>Work Areas</p> <ul style="list-style-type: none"> Pulling and Tensioning 	<p>Structure Work Area</p> <p>Access</p> <ul style="list-style-type: none"> Existing Road, Substantial Modification, 21-70% Improvements New Road, Bladed New Road, Primitive <p>Land Status</p> <ul style="list-style-type: none"> Bureau of Land Management Forest Service Private 	<p> State or Local Parks and Recreation or Wildlife</p> <p>Important Siting Constraints and Other Features</p> <ul style="list-style-type: none"> 100-foot Contours Existing Transmission Lines Pipeline, Natural Gas Other Major Roads Wallowa-Whitman NF Utility Corridor (MA-17) Protected Area (EFSC)
--	---	--

IDAHO POWER Boardman to Hemingway Transmission Line Project
An IDACORP Company

**Attachment C-3
 Alternative Location Maps**

Morgan Lake Alternative
 Union County

Map 5



Source(s): BLM, IPC, ODFW, ODOT, NPS, USDA, USFS, USGS, Ventyx, Esri, DigitalGlobe, GeoEys, Earthstar Geographics, CNES/Airbus DS, AEX, Getmapping, Aerogrid, IGN, IGP, swisstopo

Z:\UtilServ\Boardman_Hemingway\Reports\002_Oregon_Energy_Siting_Council\03_Final ASC\Exhibits\C_Project Location\Maps\Attachment C-3\Morgan Lake.mxd

June 2017

Project Features

- Site Boundary
 - Alternative
 - Proposed Route
- Route Centerline
 - Alternative
- Mileposts
 - Mile
 - Tenth-mile
- Work Areas
 - Pulling and Tensioning

Land Status

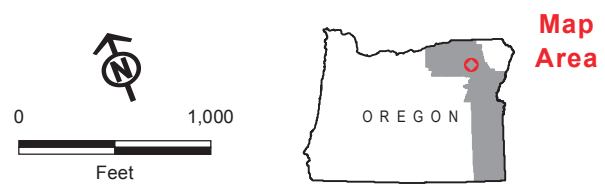
- Structure Work Area
- Access
 - Existing Road, Substantial Modification, 21-70% Improvements
 - Existing Road, Substantial Modification, 71-100% Improvements
 - New Road, Bladed
 - New Road, Primitive
- Private

Important Siting Constraints and Other Features

- 100-foot Contours
- Existing Transmission Lines
- Pipeline, Natural Gas

**Attachment C-3
 Alternative Location Maps**

Morgan Lake Alternative
 Union County



Source(s): BLM, IPC, ODFW, ODOT, NPS, USDA, USFS, USGS, Ventyx, Esri, DigitalGlobe, GeoEys, Earthstar Geographics, CNES/Airbus DS, AEX, Getmapping, Aerogrid, IGN, IGP, swisstopo

Z:\UtilServ\Boardman_Hemingway\Reports\002_Oregon_Energy_Siting_Council\03_Final ASC\Exhibits\C_Project Location\Maps\Attachment C-3\Morgan Lake.mxd

June 2017

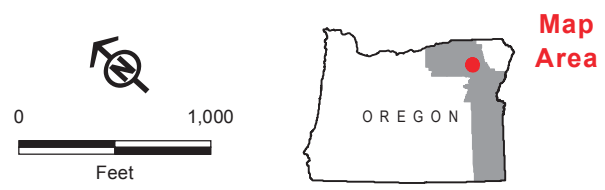
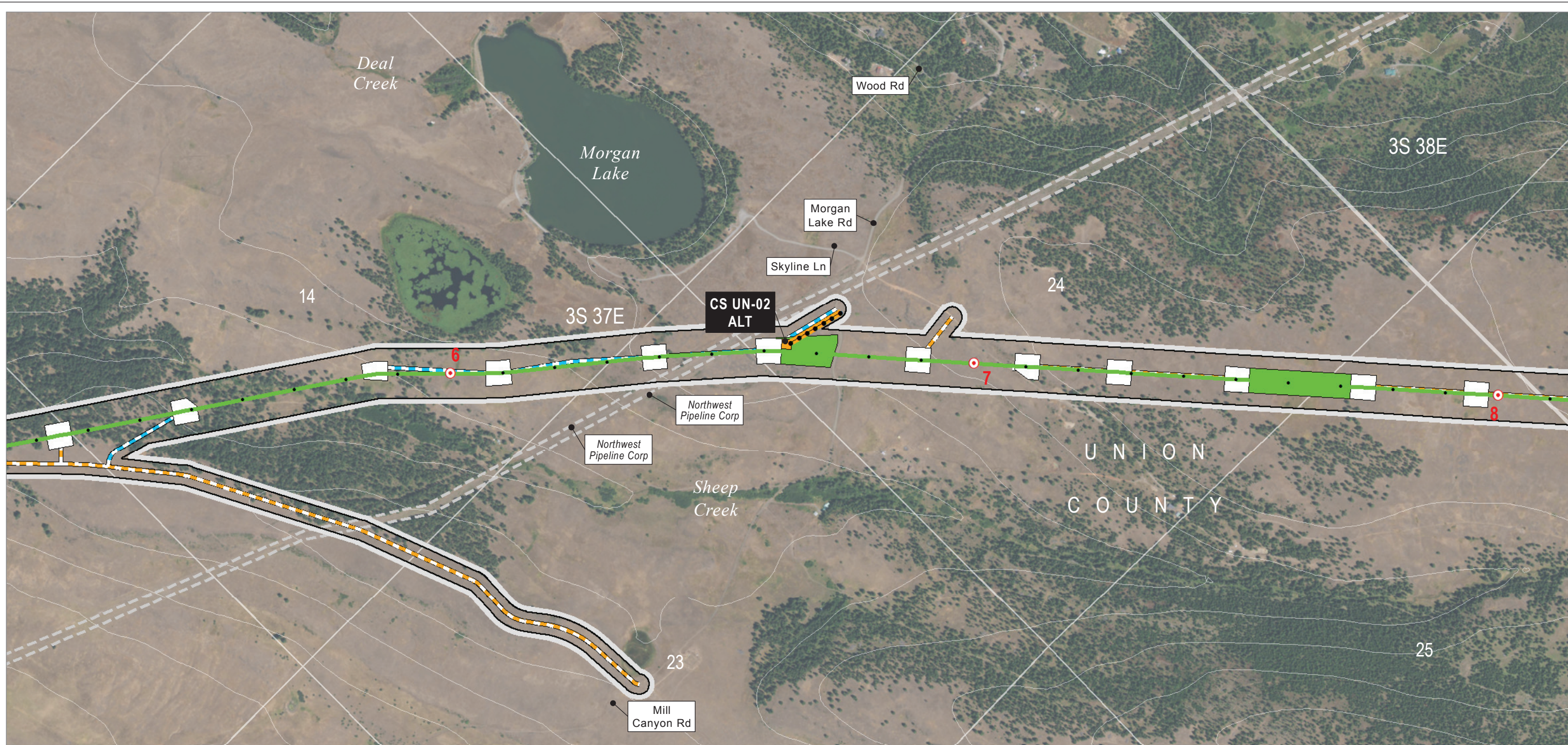
- Project Features**
- Site Boundary
 - Proposed Route
 - Access
 - Existing Road, Substantial Modification, 71-100% Improvements
 - Land Status
 - Private

- Important Siting Constraints and Other Features**
- 100-foot Contours

IDAHO POWER Boardman to Hemingway Transmission Line Project
An IDACORP Company

**Attachment C-3
 Alternative Location Maps**

Morgan Lake Alternative
 Union County



- | | | |
|--|--|---|
| <p>Project Features</p> <p>Site Boundary</p> <p>Proposed Route</p> <p>Route Centerline</p> <p>Alternative</p> <p>Mileposts</p> <p>Mile</p> <p>Tenth-mile</p> <p>Work Areas</p> <p>Communication Station</p> <p>Pulling and Tensioning</p> | <p>Structure Work Area</p> <p>Access</p> <p>New Road, Bladed</p> <p>New Road, Primitive</p> <p>Distribution Line to Communication Station (IPC Service Territory Only)</p> <p>Land Status</p> <p>Private</p> | <p>Important Siting Constraints and Other Features</p> <p>100-foot Contours</p> <p>Pipeline, Natural Gas</p> |
|--|--|---|

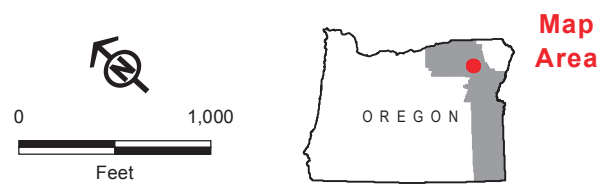
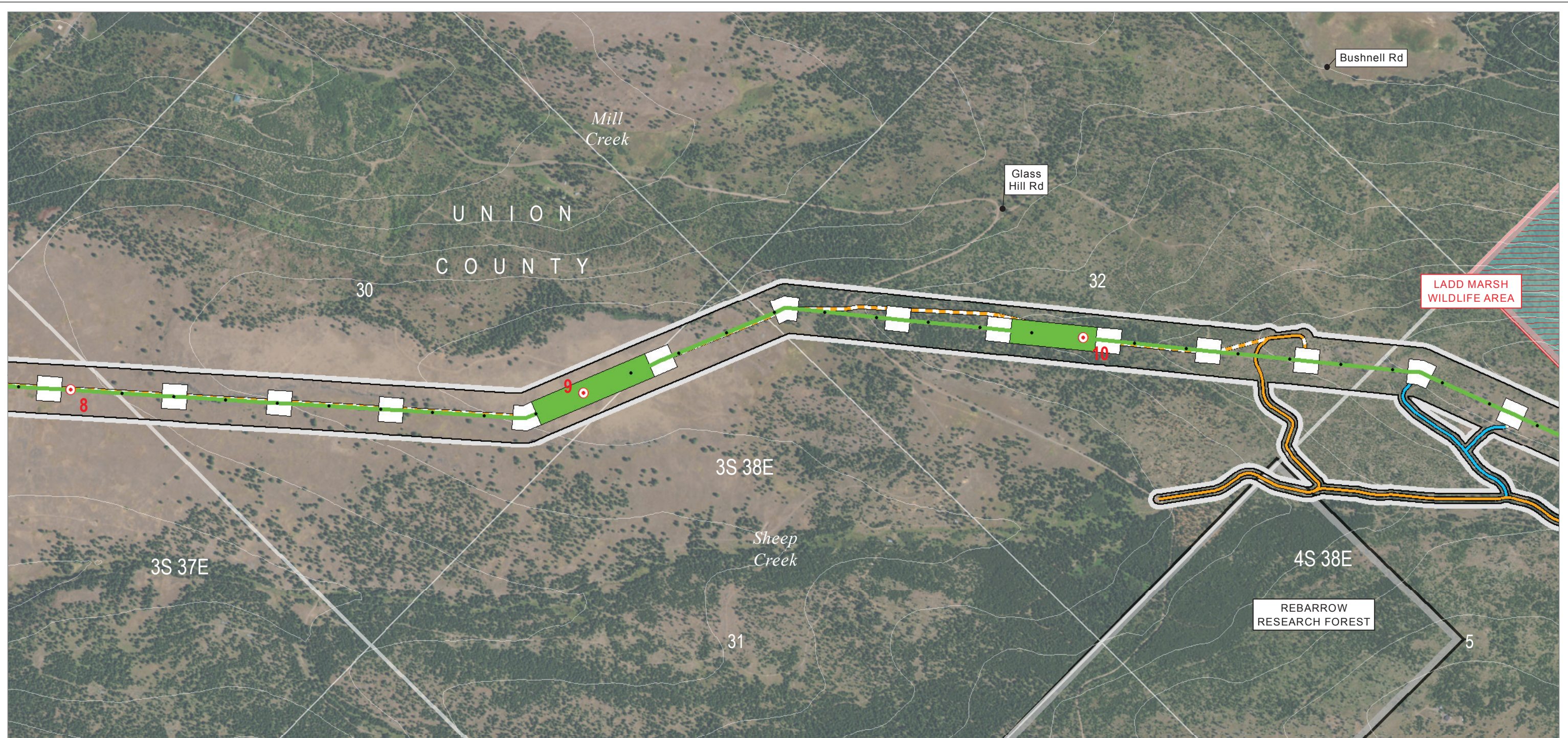
**Attachment C-3
 Alternative Location Maps**

Morgan Lake Alternative
 Union County

Source(s): BLM, IPC, ODFW, ODOT, NPS, USDA, USFS, USGS, Ventyx, Esri, DigitalGlobe, GeoEys, Earthstar Geographics, CNES/Airbus DS, AEX, Getmapping, Aerogrid, IGN, IGP, swisstopo

Z:\UtilServ\Boardman_Hemingway\Reports\002_Oregon_Energy_Siting_Council\03_Final ASC\Exhibits\C_Project Location\Maps\Attachment C-3\Morgan Lake.mxd

June 2017



Source(s): BLM, IPC, ODFW, ODOT, NPS, USDA, USFS, USGS, Ventyx, Esri, DigitalGlobe, GeoEys, Earthstar Geographics, CNES/Airbus DS, AEX, Getmapping, Aerogrid, IGN, IGP, swisstopo

Z:\UtilServ\Boardman_Hemingway\Reports\002_Oregon_Energy_Siting_Council\03_Final_ASCI\Exhibits\C_Project Location\Maps\Attachment C-3\Morgan Lake.mxd

June 2017

Project Features

- Site Boundary
- Proposed Route
- Route Centerline
- Alternative
- Mileposts
- Mile
- Tenth-mile
- Work Areas
- Pulling and Tensioning
- Structure Work Area

Access

- Existing Road, Substantial Modification, 21-70% Improvements
- Existing Road, Substantial Modification, 71-100% Improvements
- New Road, Bladed
- New Road, Primitive

Land Status

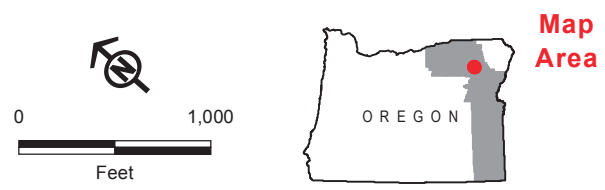
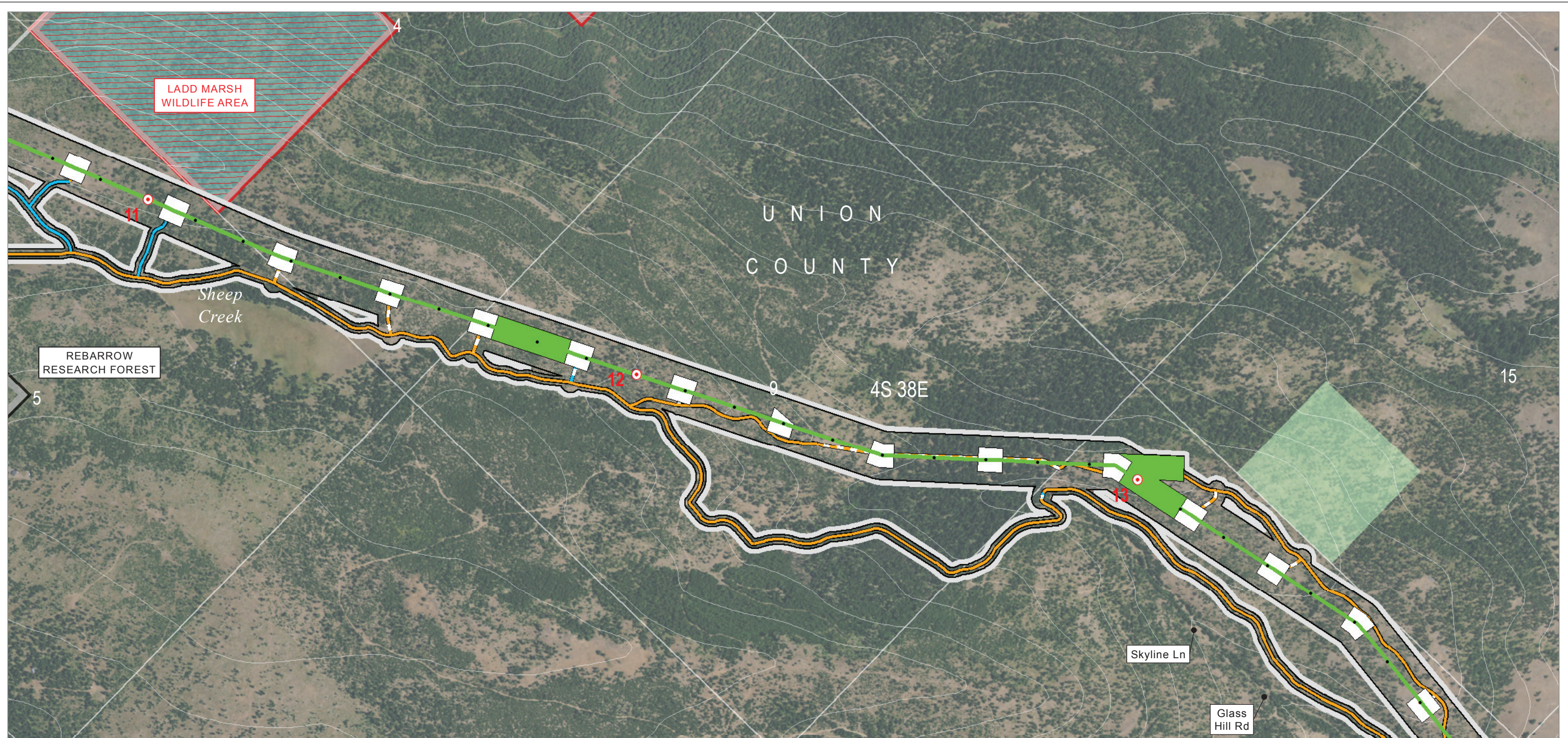
- Private
- State or Local Parks and Recreation or Wildlife

Important Siting Constraints and Other Features

- 100-foot Contours
- Glass Hill Rebarrow Forest
- Protected Area (EFSC)

**Attachment C-3
 Alternative Location Maps**

Morgan Lake Alternative
 Union County



Source(s): BLM, IPC, ODFW, ODOT, NPS, USDA, USFS, USGS, Ventyx, Esri, DigitalGlobe, GeoEys, Earthstar Geographics, CNES/Airbus DS, AEX, Getmapping, Aerogrid, IGN, IGP, swisstopo

Z:\UtilServ\Boardman_Hemingway\Reports\002_Oregon_Energy_Siting_Council\03_Final ASC\Exhibits\C_Project Location\Maps\Attachment C-3\Morgan Lake.mxd

June 2017

Project Features

- Site Boundary
- Proposed Route
- Route Centerline
- Alternative
- Mileposts
- Mile
- Tenth-mile
- Work Areas
- Pulling and Tensioning
- Structure Work Area

Access

- Existing Road, Substantial Modification, 21-70% Improvements
- Existing Road, Substantial Modification, 71-100% Improvements
- New Road, Bladed
- New Road, Primitive

Land Status

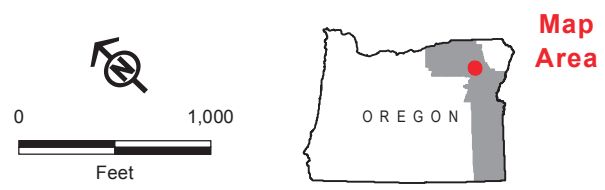
- Forest Service
- Private

Important Siting Constraints and Other Features

- State or Local Parks and Recreation or Wildlife
- 100-foot Contours
- Glass Hill Rebarrow Forest
- Protected Area (EFSC)

**Attachment C-3
 Alternative Location Maps**

Morgan Lake Alternative
 Union County



Source(s): BLM, IPC, ODFW, ODOT, NPS, USDA, USFS, USGS, Ventyx, Esri, DigitalGlobe, GeoEys, Earthstar Geographics, CNES/Airbus DS, AEX, Getmapping, Aerogrid, IGN, IGP, swisstopo

Z:\UtilServ\Boardman_Hemingway\Reports\002_Oregon_Energy_Siting_Council\03_Final ASC\Exhibits\C_Project Location\Maps\Attachment C-3\Morgan Lake.mxd

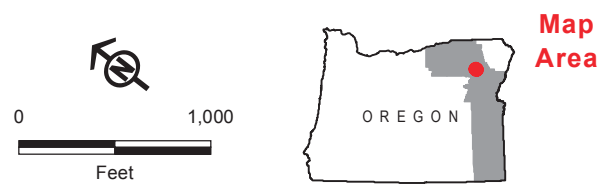
June 2017

- | | | |
|--|--|---|
| <p>Project Features</p> <p>Site Boundary</p> <ul style="list-style-type: none"> Alternative Proposed Route <p>Route Centerline</p> <ul style="list-style-type: none"> Alternative <p>Mileposts</p> <ul style="list-style-type: none"> Mile Tenth-mile <p>Work Areas</p> <ul style="list-style-type: none"> Pulling and Tensioning | <p>Structure Work Area</p> <p>Access</p> <ul style="list-style-type: none"> Existing Road, Substantial Modification, 21-70% Improvements New Road, Bladed New Road, Primitive <p>Land Status</p> <ul style="list-style-type: none"> Forest Service Private | <p>Important Siting Constraints and Other Features</p> <ul style="list-style-type: none"> 100-foot Contours Existing Transmission Lines Interstates or Highways |
|--|--|---|

IDAHO POWER Boardman to Hemingway Transmission Line Project
An IDACORP Company

**Attachment C-3
 Alternative Location Maps**

Morgan Lake Alternative
 Union County



Source(s): BLM, IPC, ODFW, ODOT, NPS, USDA, USFS, USGS, Ventyx, Esri, DigitalGlobe, GeoEys, Earthstar Geographics, CNES/Airbus DS, AEX, Getmapping, Aerogrid, IGN, IGP, swisstopo

Z:\UtilServ\Boardman_Hemingway\Reports\002_Oregon_Energy_Siting_Council\03_Final ASC\Exhibits\C_Project Location\Maps\Attachment C-3\Morgan Lake.mxd

June 2017

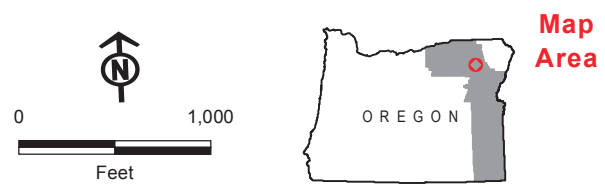
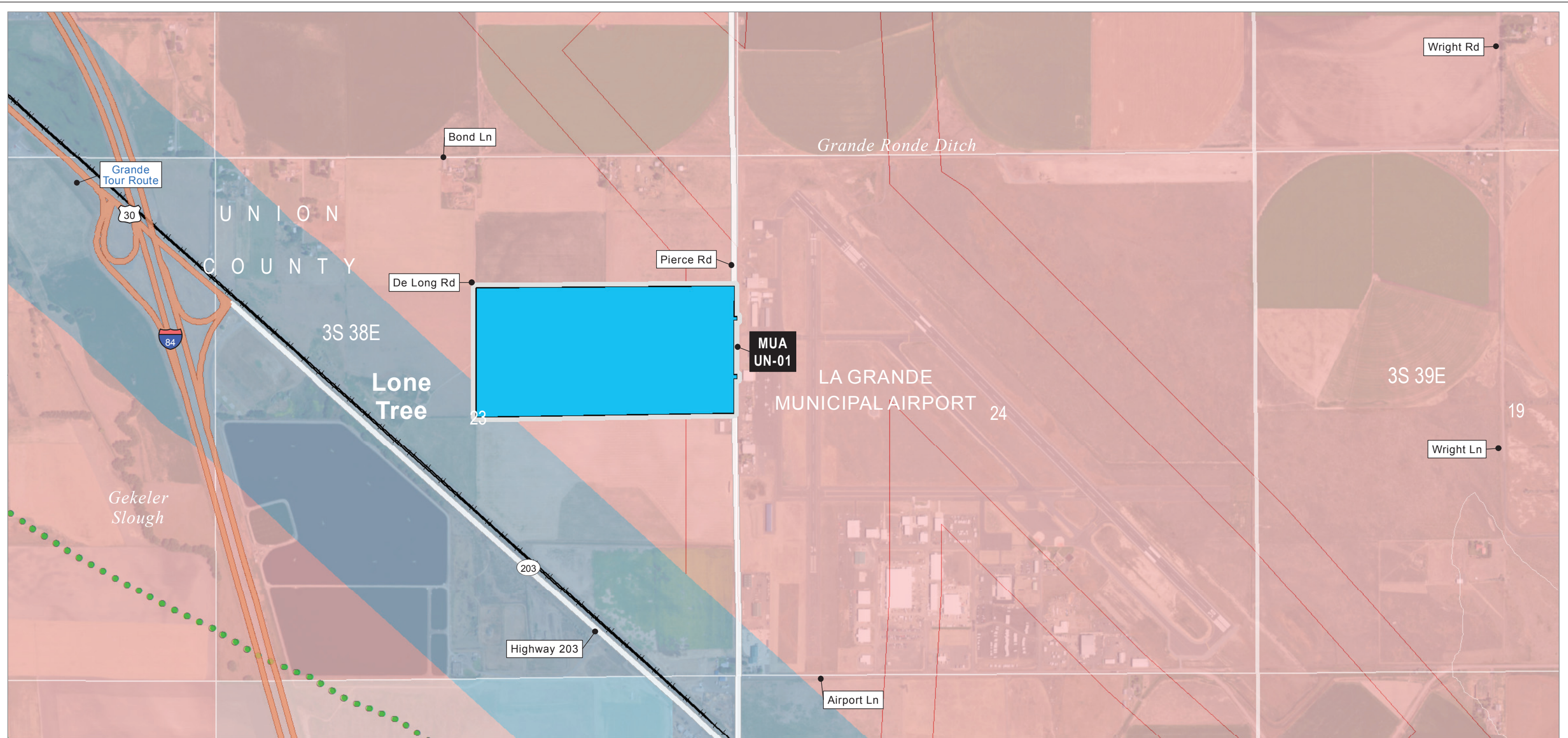
- | | |
|--------------------------|--|
| Project Features | □ Structure Work Area |
| Site Boundary | □ Access |
| □ Alternative | ▬ New Road, Bladed |
| ▬ Proposed Route | ▬ New Road, Primitive |
| Route Centerline | Land Status |
| ▬ Alternative | □ Private |
| Mileposts | Important Siting Constraints and Other Features |
| ○ Mile | ~ 100-foot Contours |
| • Tenth-mile | ● Existing Transmission Lines |
| Work Areas | |
| ■ Pulling and Tensioning | |

IDAHO POWER Boardman to Hemingway Transmission Line Project
AN IDACORP COMPANY

**Attachment C-3
 Alternative Location Maps**

Morgan Lake Alternative
 Union County

Map 12



Source(s): BLM, IPC, ODFW, ODOT, NPS, USDA, USFS, USGS, Ventyx, Esri, DigitalGlobe, GeoEys, Earthstar Geographics, CNES/Airbus DS, AEX, Getmapping, Aerogrid, IGN, IGP, swisstopo

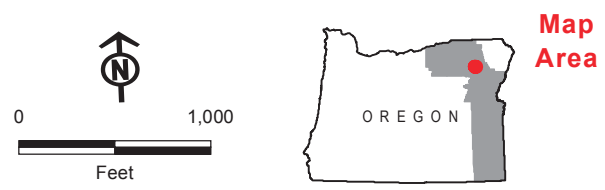
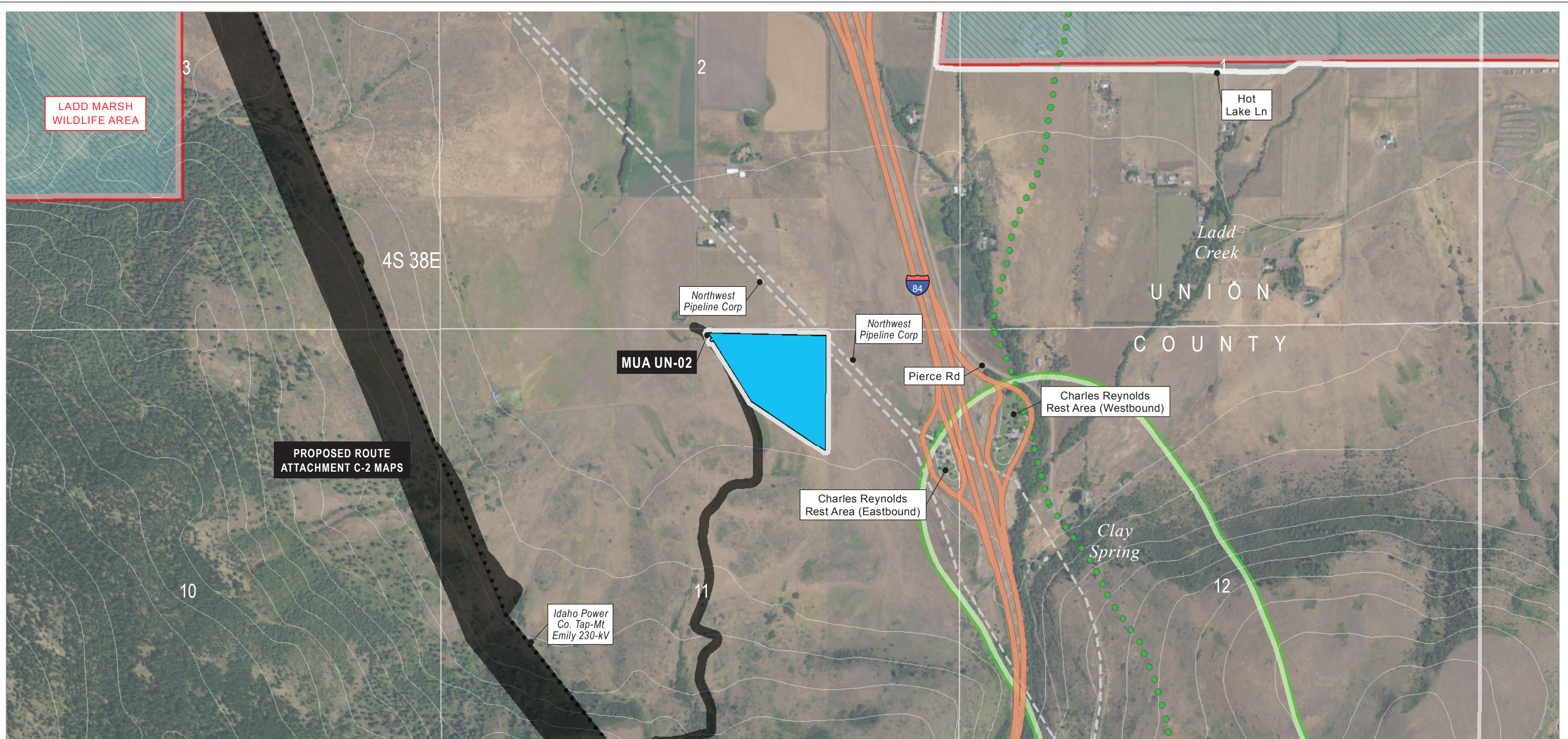
Z:\UtilServ\Boardman_Hemingway\Reports\002_Oregon_Energy_Siting_Council\03_Final ASC\Exhibits\C_Project Location\Maps\Attachment C-3\Morgan Lake.mxd

June 2017

- | | | |
|---|---|--|
| <p>Project Features</p> <p>Site Boundary</p> <ul style="list-style-type: none"> Alternative Proposed Route <p>Work Areas</p> <ul style="list-style-type: none"> Multi-Use Area <p>Land Status</p> <ul style="list-style-type: none"> Private State or Local State or Local Parks and Recreation or Wildlife | <p>Important Siting Constraints and Other Features</p> <ul style="list-style-type: none"> 100-foot Contours Interstates or Highways Other Major Roads Railroads Airport Controlled Airspace (Height Restrictions Apply) Oregon National Historic Trail (NHT) | <ul style="list-style-type: none"> Scenic Byway (2,400-foot corridor) |
|---|---|--|

**Attachment C-3
 Alternative Location Maps**

Morgan Lake Alternative Union County



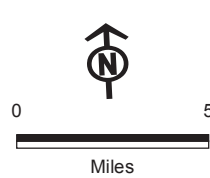
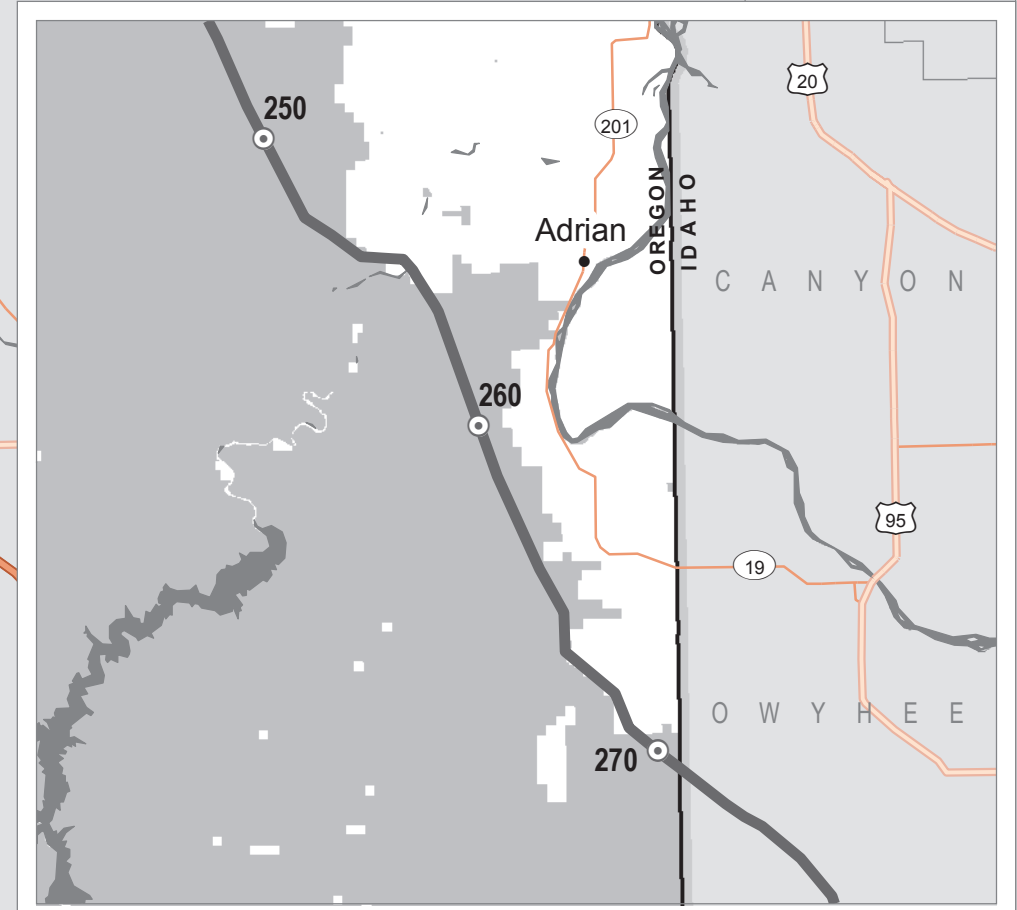
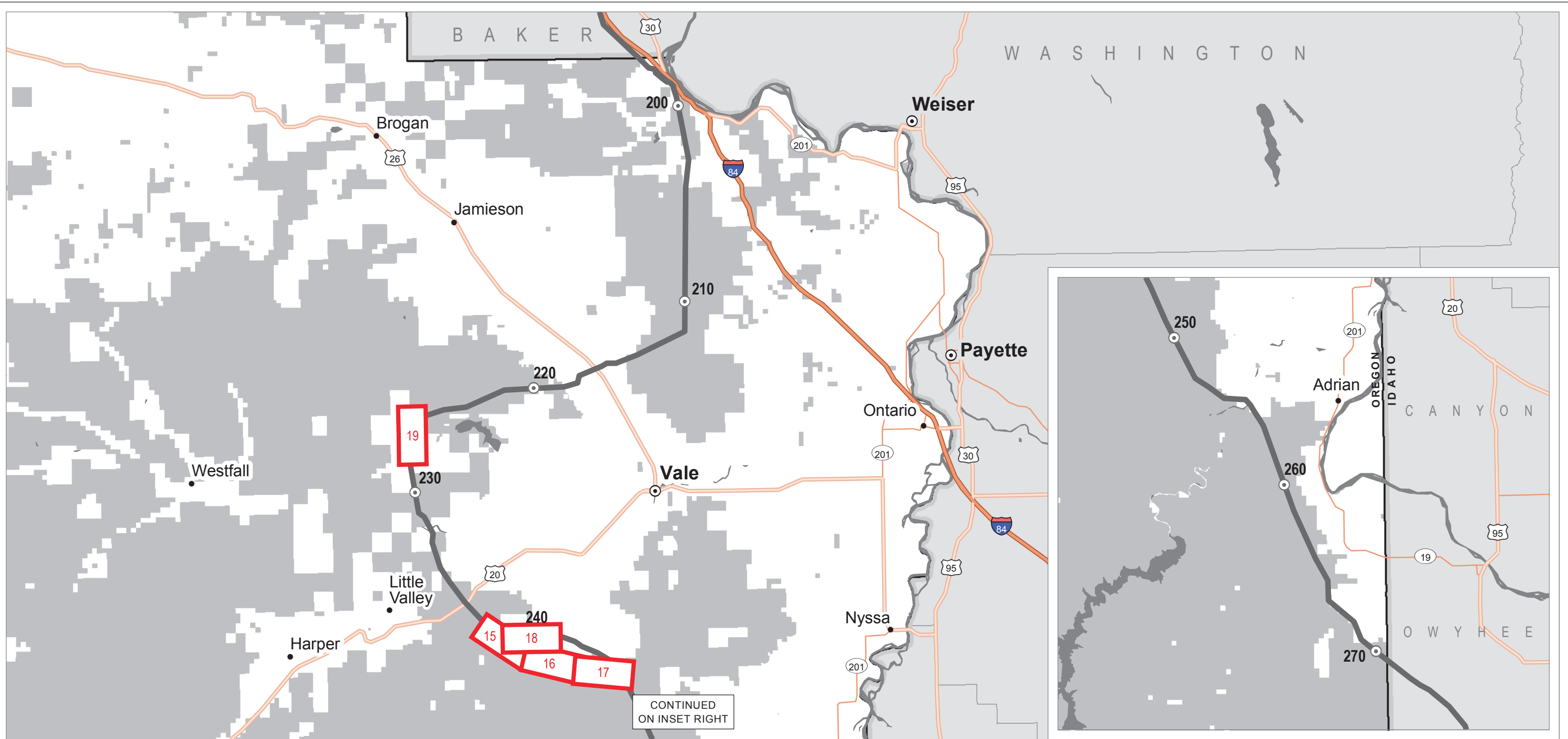
Source(s): BLM, IPC, ODFW, ODOT, NPS, USDA, USFS, USGS, Ventyx, Esri, DigitalGlobe, GeoEys, Earthstar Geographics, CNES/Airbus DS, AEX, Getmapping, Aerogrid, IGN, IGP, swisstopo

Z:\UtilServ\Boardman_Hemingway\Reports\002_Oregon_Energy_Siting_Council\03_Final ASC\Exhibits\C_Project Location\Maps\Attachment C-3\Morgan Lake.mxd

June 2017

- | | | |
|--|--|------------------------------|
| <p>Project Features</p> <ul style="list-style-type: none"> Site Boundary Alternative Proposed Route Work Areas Multi-Use Area <p>Land Status</p> <ul style="list-style-type: none"> Private State or Local Parks and Recreation or Wildlife | <p>Important Siting Constraints and Other Features</p> <ul style="list-style-type: none"> 100-foot Contours Existing Transmission Lines Pipeline, Natural Gas Interstates or Highways Other Major Roads Oregon National Historic Trail (NHT) Oregon NHT Intact Segment (1/4-mile buffer) | <p>Protected Area (EFSC)</p> |
|--|--|------------------------------|

**Attachment C-3
 Alternative Location Maps
 Morgan Lake Alternative
 Union County**

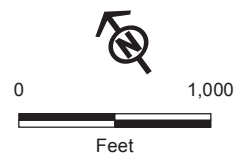
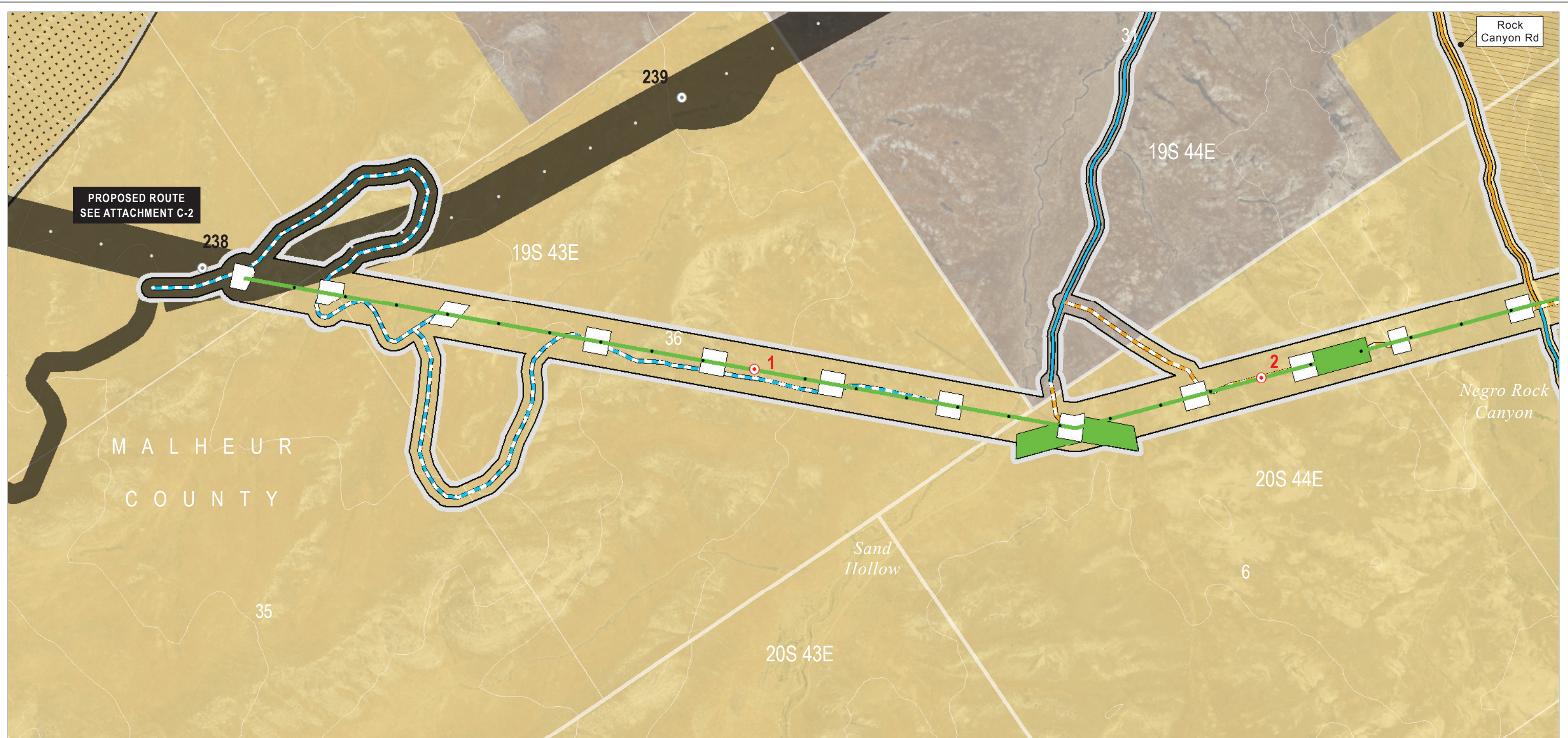


- Map Index**
- Location Map (Map #)
- Project Features**
- Proposed Route
 - Ten-mile Marker

Source(s): BLM, IPC, ODFW, ODOT, NPS, USDA, USFS, USGS, Ventyx, Esri, DigitalGlobe, GeoEys, Earthstar Geographics, CNES/Airbus DS, AEX, Getmapping, Aerogrid, IGN, IGP, swisstopo

Z:\UtilServ\Boardman_Hemingway\Reports\002_Oregon_Energy_Siting_Council\03_Final ASC\Exhibits\C_Project Location\Maps\Attachment C-3\Index_Malheur.mxd

This page intentionally left blank.



Source(s): BLM, IPC, ODFW, ODOT, NPS, USDA, USFS, USGS, Ventyx, Esri, DigitalGlobe, GeoEys, Earthstar Geographics, CNES/Airbus DS, AEX, Getmapping, Aerogrid, IGN, IGP, swisstopo

Z:\UtilServ\Boardman_Hemingway\Reports\002_Oregon_Energy_Siting_Council\03_Final ASC\Exhibits\C_Project Location\Maps\Attachment C-3\Double Mountain.mxd

June 2017

Project Features

- Site Boundary
 - Alternative
 - Proposed Route
- Route Centerline
 - Alternative
- Mileposts
 - Mile
 - Tenth-mile
- Work Areas
 - Pulling and Tensioning

- Structure Work Area
- Access
 - Existing Road, Substantial Modification, 21-70% Improvements
 - Existing Road, Substantial Modification, 71-100% Improvements
 - New Road, Bladed
 - New Road, Primitive
- Land Status
 - Bureau of Land Management

- Private
- Important Siting Constraints and Other Features
 - 100-foot Contours
 - VRM 3
 - Wilderness Characteristic Unit Meeting Wilderness Criteria

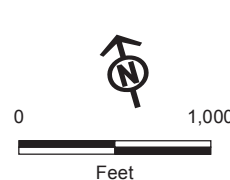
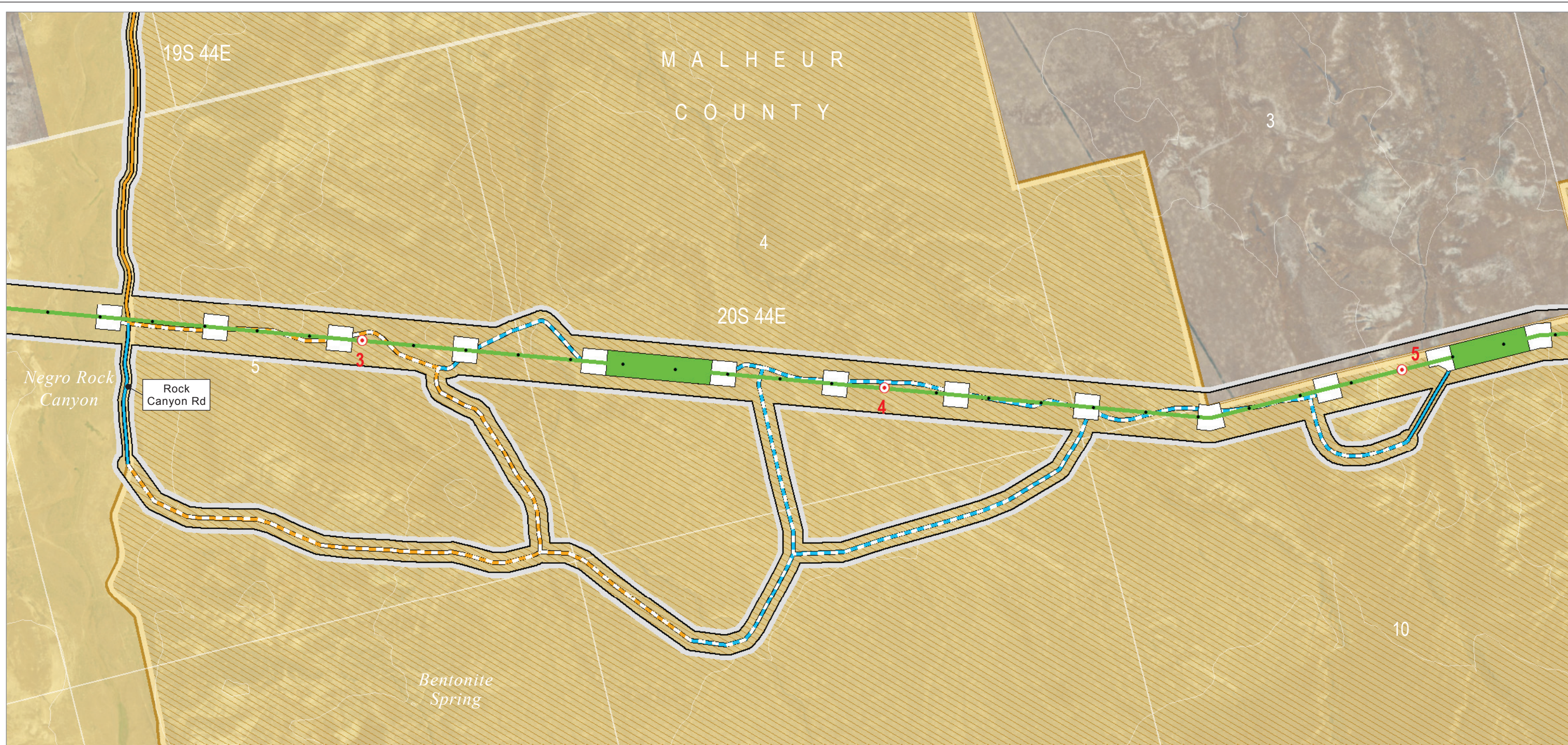


Boardman to Hemingway
Transmission Line Project

**Attachment C-3
Alternative Location Maps**

Double Mountain Alternative
Malheur County

Map 15



Source(s): BLM, IPC, ODFW, ODOT, NPS, USDA, USFS, USGS, Ventyx, Esri, DigitalGlobe, GeoEys, Earthstar Geographics, CNES/Airbus DS, AEX, Getmapping, Aerogrid, IGN, IGP, swisstopo

Z:\UtilServ\Boardman_Hemingway\Reports\002_Oregon_Energy_Siting_Council\03_Final ASC\Exhibits\C_Project Location\Maps\Attachment C-3\Double Mountain.mxd

June 2017

Project Features

- Site Boundary
- Proposed Route
- Route Centerline
- Alternative
- Mileposts
- Mile
- Tenth-mile
- Work Areas
- Pulling and Tensioning
- Structure Work Area

Access

- Existing Road, Substantial Modification, 21-70% Improvements
- Existing Road, Substantial Modification, 71-100% Improvements
- New Road, Bladed
- New Road, Primitive

Land Status

- Bureau of Land Management
- Private

Important Siting Constraints and Other Features

- 100-foot Contours
- Wilderness Characteristic Unit Meeting Wilderness Criteria

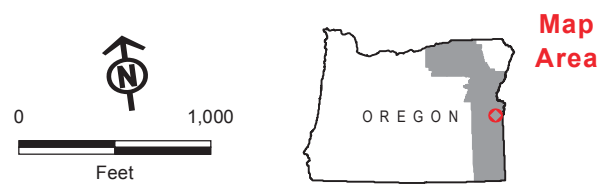
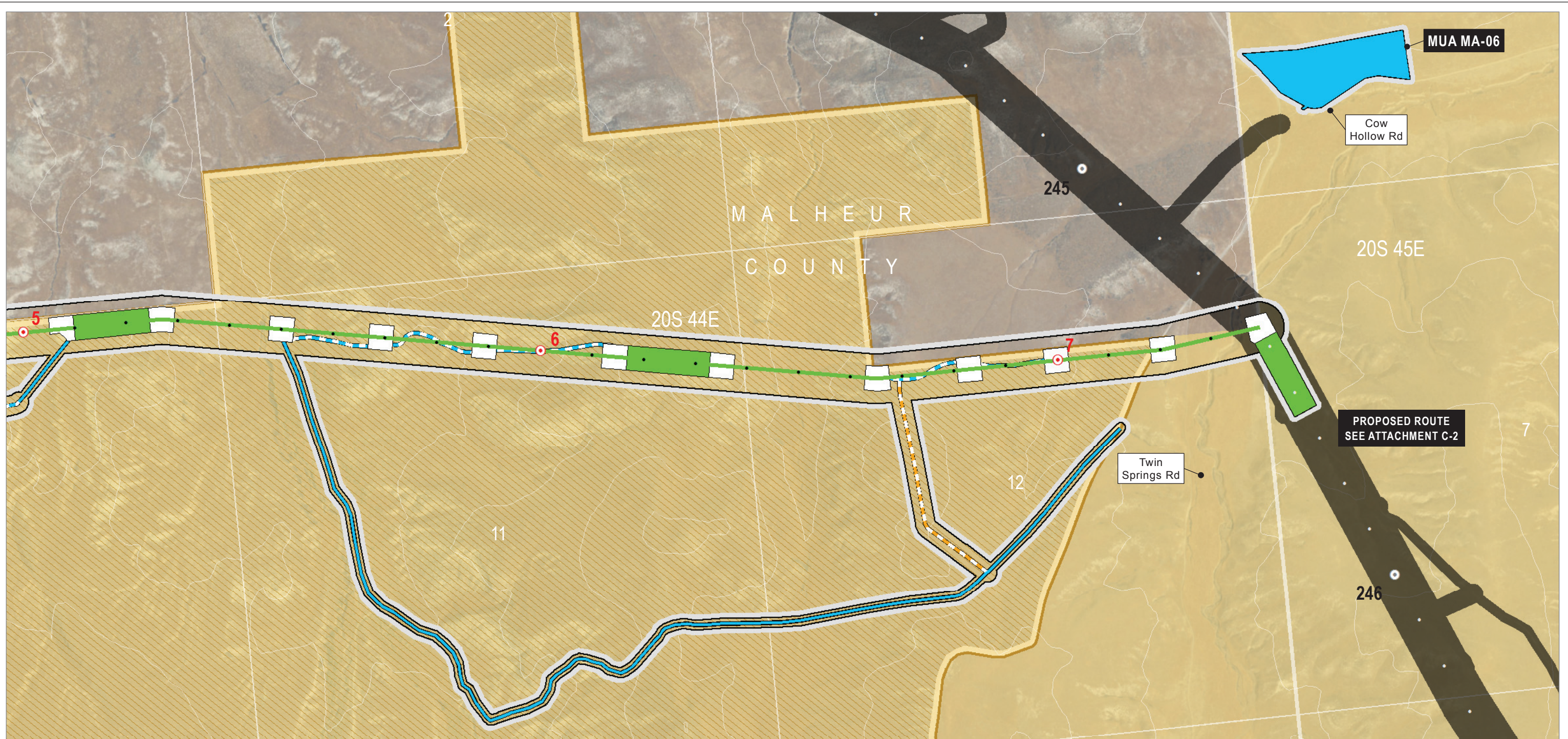


Boardman to Hemingway Transmission Line Project

**Attachment C-3
Alternative Location Maps**

Double Mountain Alternative
Malheur County

Map 16



Project Features

- Site Boundary
- Alternative
- Proposed Route
- Route Centerline
- Alternative
- Mileposts
- Mile
- Tenth-mile
- Work Areas
- Multi-Use Area

- Pulling and Tensioning
- Structure Work Area
- Access
- Existing Road, Substantial Modification, 71-100% Improvements
- New Road, Bladed
- New Road, Primitive
- Land Status
- Bureau of Land Management
- Private

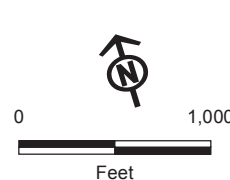
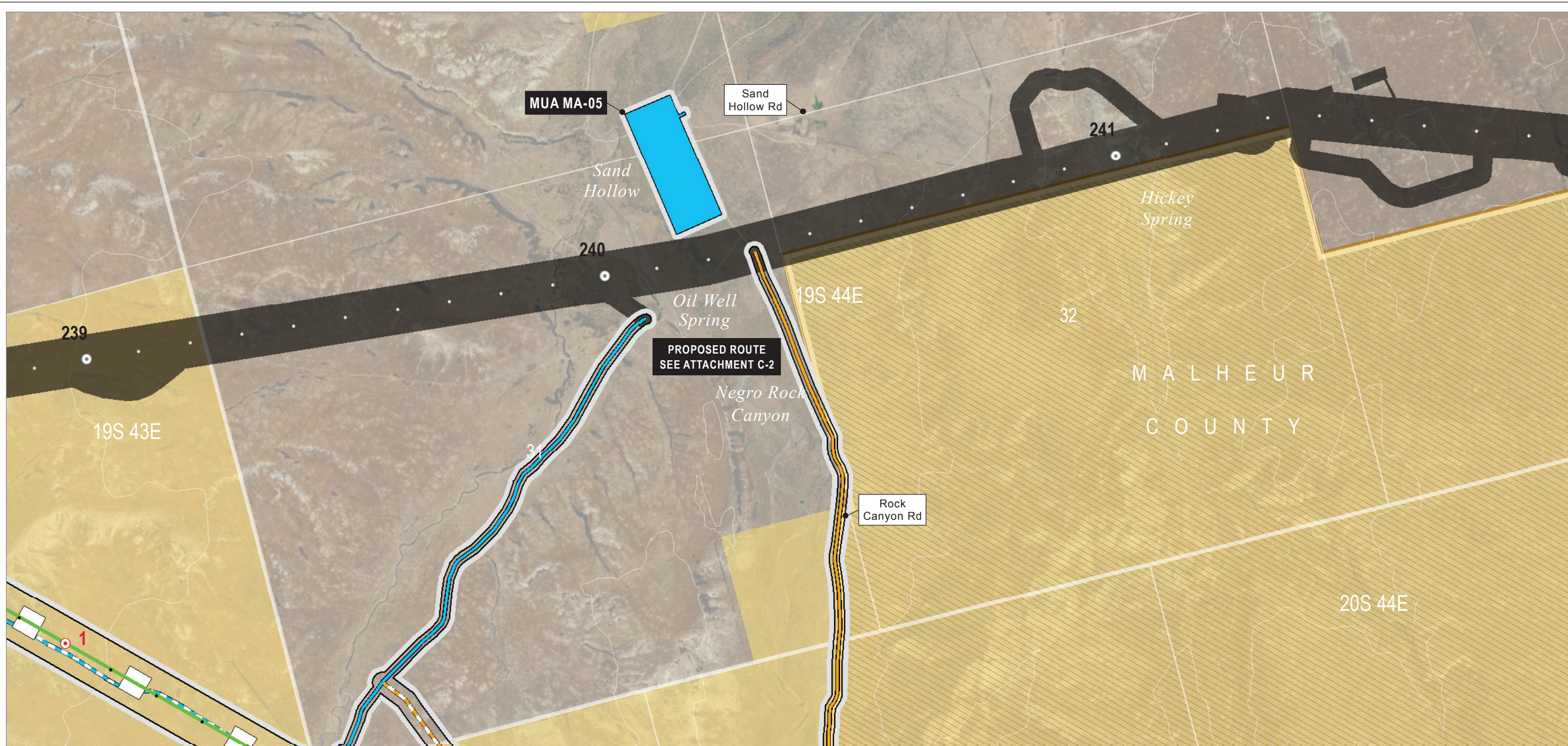
Important Siting Constraints and Other Features

- 100-foot Contours
- Wilderness Characteristic Unit Meeting Wilderness Criteria

**Attachment C-3
 Alternative Location Maps**

Double Mountain Alternative
 Malheur County

Source(s): BLM, IPC, ODFW, ODOT, NPS, USDA, USFS, USGS, Ventyx, Esri, DigitalGlobe, GeoEys, Earthstar Geographics, CNES/Airbus DS, AEX, Getmapping, Aerogrid, IGN, IGP, swisstopo
 Z:\UtilServ\Boardman_Hemingway\Reports\002_Oregon_Energy_Siting_Council\03_Final ASC\Exhibits\C_Project Location\Maps\Attachment C-3\Double Mountain.mxd
 June 2017



Project Features

- Site Boundary
- Alternative
- Proposed Route
- Route Centerline
- Alternative
- Mileposts
- Mile
- Tenth-mile
- Work Areas
- Multi-Use Area

- Pulling and Tensioning
- Structure Work Area
- Access
- Existing Road, Substantial Modification, 21-70% Improvements
- Existing Road, Substantial Modification, 71-100% Improvements
- New Road, Bladed
- New Road, Primitive

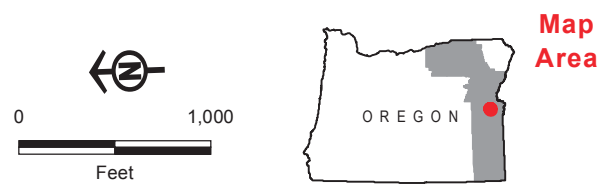
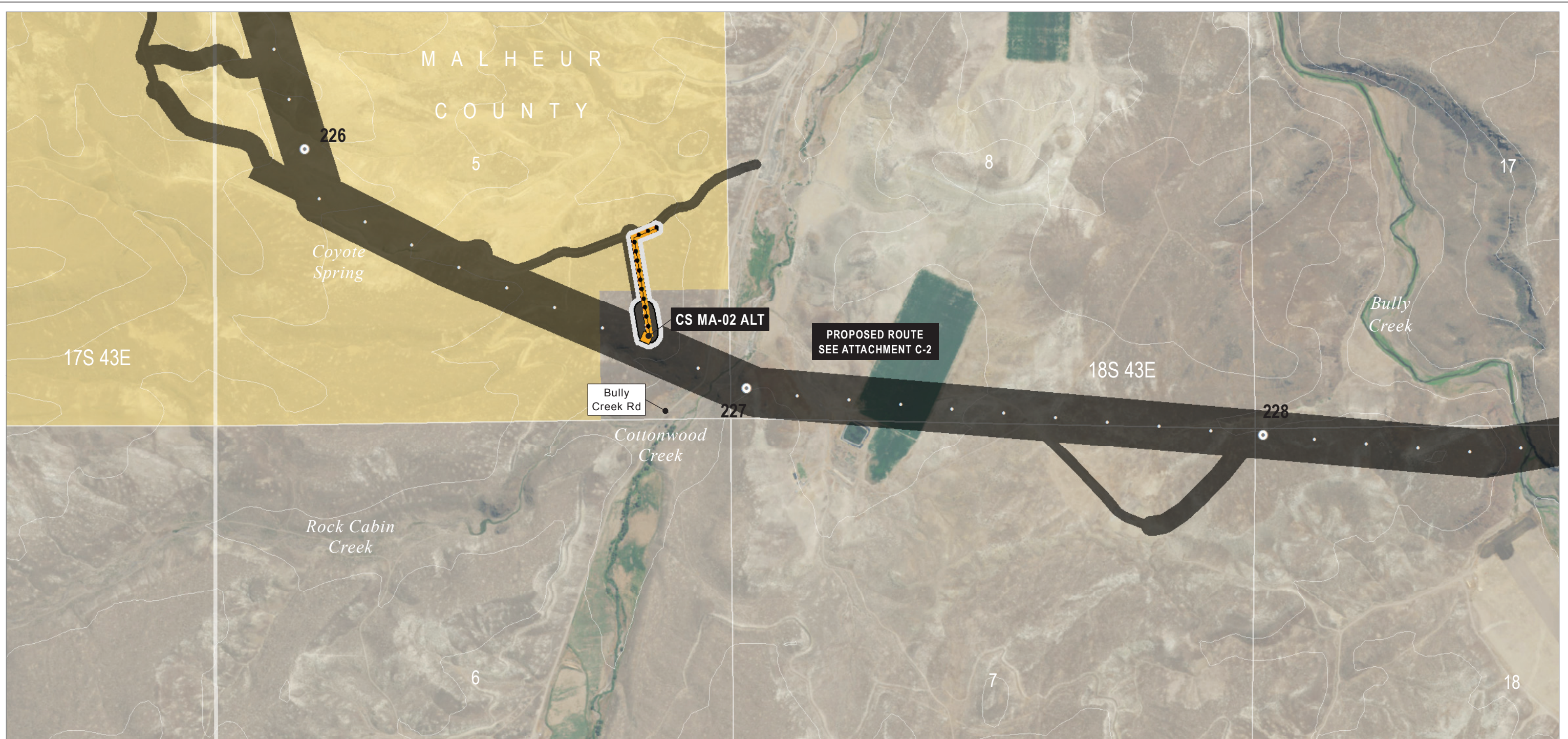
Land Status

- Bureau of Land Management
- Private
- Important Siting Constraints and Other Features
- 100-foot Contours
- Wilderness Characteristic Unit Meeting Wilderness Criteria

**Attachment C-3
 Alternative Location Maps**

Double Mountain Alternative
 Malheur County

Source(s): BLM, IPC, ODFW, ODOT, NPS, USDA, USFS, USGS, Ventyx, Esri, DigitalGlobe, GeoEys, Earthstar Geographics, CNES/Airbus DS, AEX, Getmapping, Aerogrid, IGN, IGP, swisstopo
 Z:\UtilServ\Boardman_Hemingway\Reports\002_Oregon_Energy_Siting_Council\03_Final ASC\Exhibits\C_Project Location\Maps\Attachment C-3\Double Mountain.mxd



Source(s): BLM, IPC, ODFW, ODOT, NPS, USDA, USFS, USGS, Ventyx, Esri, DigitalGlobe, GeoEys, Earthstar Geographics, CNES/Airbus DS, AEX, Getmapping, Aerogrid, IGN, IGP, swisstopo

Z:\UtilServ\Boardman_Hemingway\Reports\002_Oregon_Energy_Siting_Council\03_Final ASC\Exhibits\C_Project Location\Maps\Attachment C-3\Double Mountain.mxd

June 2017

- | | | | |
|---|---|--|---|
| Project Features | | Land Status | |
| Site Boundary | | Bureau of Land Management | |
| Alternative | □ | Private | □ |
| Proposed Route | ■ | Important Siting Constraints and Other Features | |
| Work Areas | | 100-foot Contours | ~ |
| Communication Station | ■ | | |
| Access | | | |
| New Road, Bladed | — | | |
| Distribution Line to Communication Station (IPC Service Territory Only) | — | | |

Attachment C-3
Alternative Location Maps
Double Mountain Alternative
Malheur County