

BE IT REMEMBERED, that at a regular term of the Union County Board of Commissioners, for the County of Union, sitting for the transaction of County business, begun and held at the Joseph Building Annex in the City of La Grande, in said County and State, on Wednesday of said month and the time fixed by law for holding a regular term of said Court, when were present:

The Honorable DONNA BEVERAGE, CHAIR
PAUL ANDERES, COMMISSIONER
R. MATTHEW SCARFO, COMMISSIONER

WHEN, on Wednesday, the _____ day of _____ 2022, among others the following proceedings were had to-wit:

IN THE MATTER OF AMENDING THE)
UNION COUNTY COMPREHENSIVE LAND USE PLAN,)
MAP/TEXT AND BASALT AGGREGATE INVENTORY AND) ORDINANCE
APPLYING A SURFACE MINING ZONE TO A 40 ACRE) 2022-03
SIGNIFICANT AGGREGATE SITE)

WHEREAS, Boothman Ranches, Inc. submitted an application to amend the Comprehensive Plan, Map/Text and Basalt Aggregate Inventory to change an existing 40 acre non-significant Basalt Aggregate Site to a significant Basalt Aggregate Site and zone change to a Surface Mining Zone (Twp. 04S, Range 39 EWM, Tax Lot 2500);

WHEREAS, DLCD was given 35 days notice prior to the first evidentiary hearing;

WHEREAS, the Union County Planning Commission advertised and held a public hearing on August 22, 2022, and made a unanimous decision recommending approval of the application to the Union County Board of Commissioners;

WHEREAS, the Union County Board of Commissioners advertised and held a public hearing on September 8, 2022 to deliberate and potentially make a decision.

NOW THEREFORE, BE IT ORDAINED BY THE UNION COUNTY BOARD OF COMMISSIONERS, STATE OF OREGON:

SECTION 1: UNION COUNTY LAND USE PLAN

The Union County Land Use Plan Supplement – June 1984 is amended to include 40 acres (Twp. 04S, Range 39 EWM, Tax Lot 2500) as shown on the attached map (Exhibit A) as a significant Goal 5 basalt aggregate resource site.

SECTION 2: ZONING MAP

The Union County Land Use Plan/Zoning Map is amended to change the 40 acres shown on Exhibit A, attached and affixed hereto and made a part of this ordinance, from an A-4 Timber Grazing Zone to a Surface Mining Zone with an associated quarter mile parameter Impact Overlay Zone.

SECTION 3: SUPPORTED FINDINGS

This Ordinance is passed and adopted with the supported findings included in Attachment "A".

First Reading Date: _____

Second Reading Date: _____

Approved this _____ day of _____, 2022.

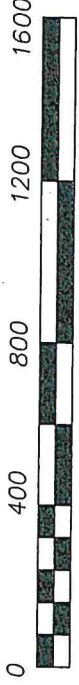
Donna Beverage, Chair

Paul Anderes, Commissioner

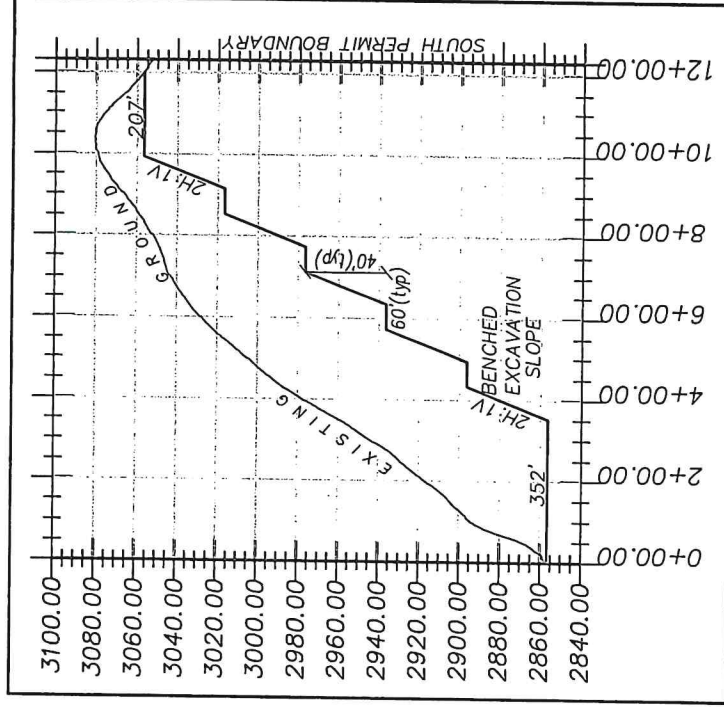
R. Matthew Scarfo, Commissioner

FINAL DRAFT HOT LAKE ROCK QUARRY

Situated in Section 6, Township 4 South, Range 39 East of the Willamette Meridian, Union County, Oregon
Tax Lot 2500, Map 04S39E



HORIZONTAL SCALE: 1"=400'
VERTICAL SCALE: 1"=80'

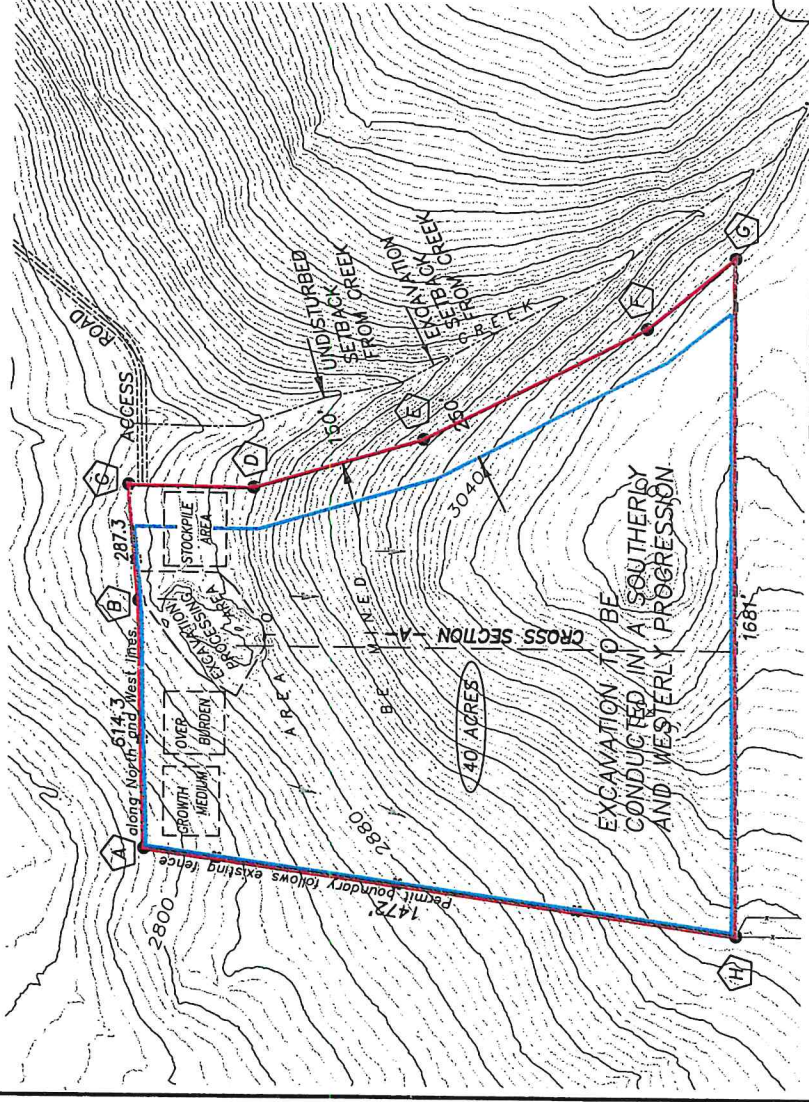


REGISTERED
**PROFESSIONAL
LAND SURVEYOR**

OREGON
JUNE 2, 2010
JEFFREY S. HSU
83571

Renewal Date: June 30, 2023.

NOTE: Coordinates are in Oregon State Plane North Zone (NAD-83). Permit boundary coordinates established by field ties using Leica GS18 RTK GPS unit. Boundary based on existing fence line on the North and West sides and holding a 150 foot setback from the existing creek on the East side. Date of survey 12-23-2020.



LEGEND

- Proposed operating permit boundary corner
 - Permit boundary
 - Excavation Area
 - - - Fenceline
 - ~ Creek
 - 30'00 Contour (5 ft interval)
- Contour lines based on DOGAMI LIDAR data

POINT	NORTHING	EASTING
A	584607.22	8849023.07
B	584642.54	8849636.24
C	584676.93	8849921.43
D	584371.10	8849926.51
E	583961.37	8850062.14
F	583421.33	8850358.01
G	583210.38	8850540.63
H	583144.04	8848861.61