



UNION COUNTY SURVEYOR GEOGRAPHIC INFORMATION SYSTEM PUBLIC LAND SURVEY MONUMENTS

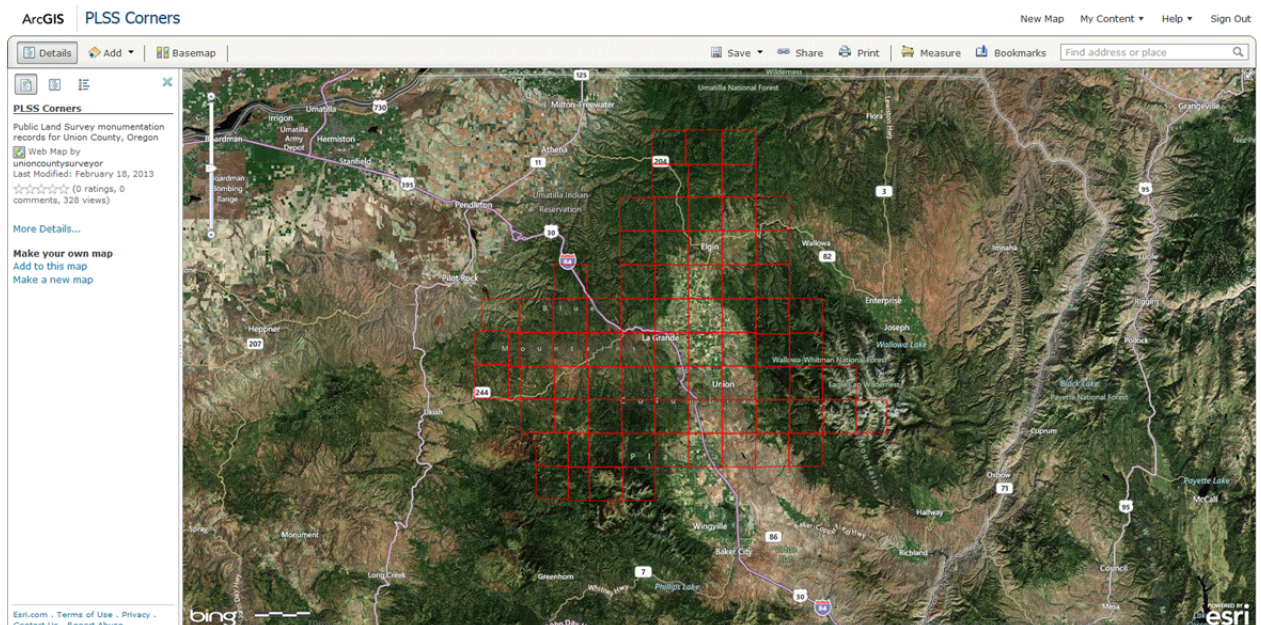
This layer gives access to scanned monumentation records for corners that are a part of the Public Land Survey system that have been filed with the Union County Surveyor. For each entry, there are two types of scanned documents:

- Index Sheets – are a chronological record of a corner’s history. Surveys, partitions, and subdivisions that utilize the corner, monumentation sheets and GPS network observations are all included.
- Monumentation Records – There are the records that are filed when changes to a public land survey corner are made (remonumentation or reaccessorizing). Miscellaneous records that are filed may include BLM field notes, unfiled surveys or forester field notes.

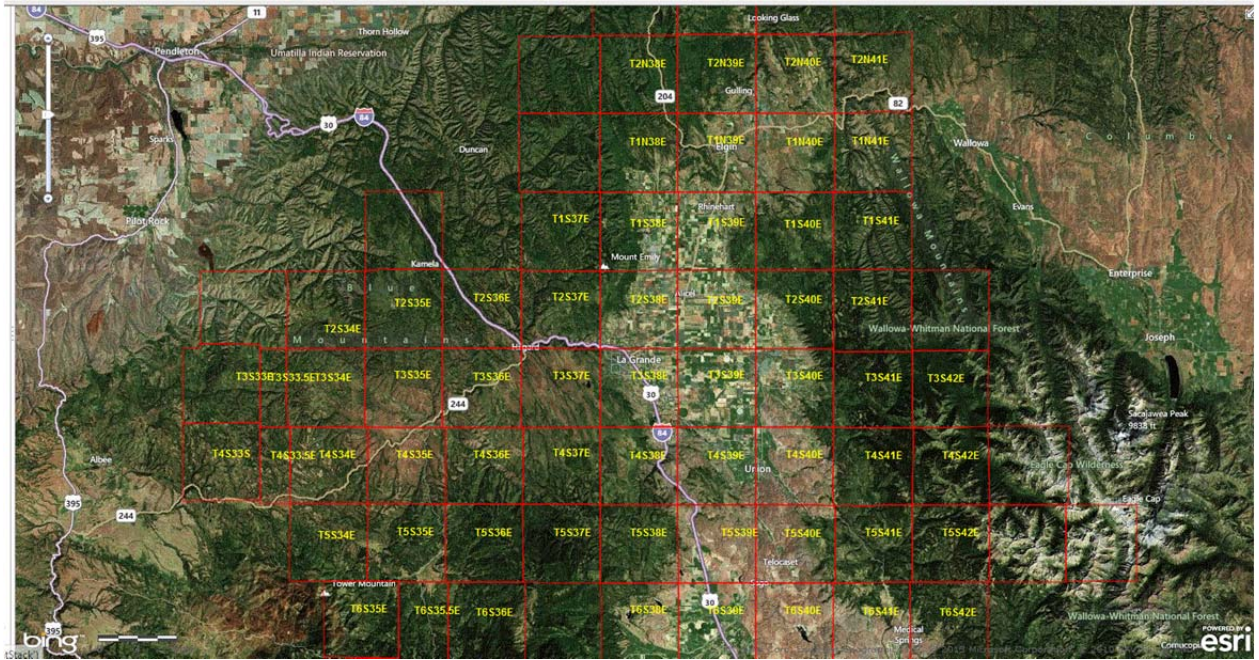
Instructions for using the Union County PLSS GIS

The Union County Public Land Survey GIS can be accessed at <http://bit.ly/YoDLle>

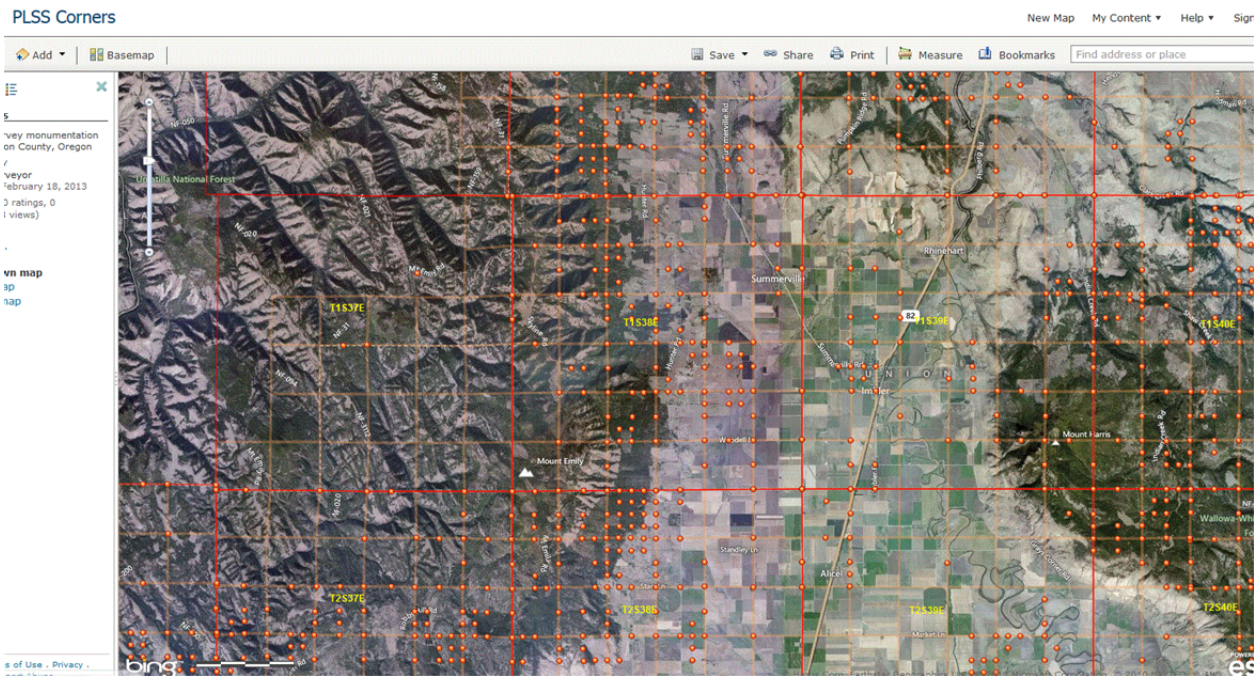
- 1) The first screen that shows up displays the townships of Union County.



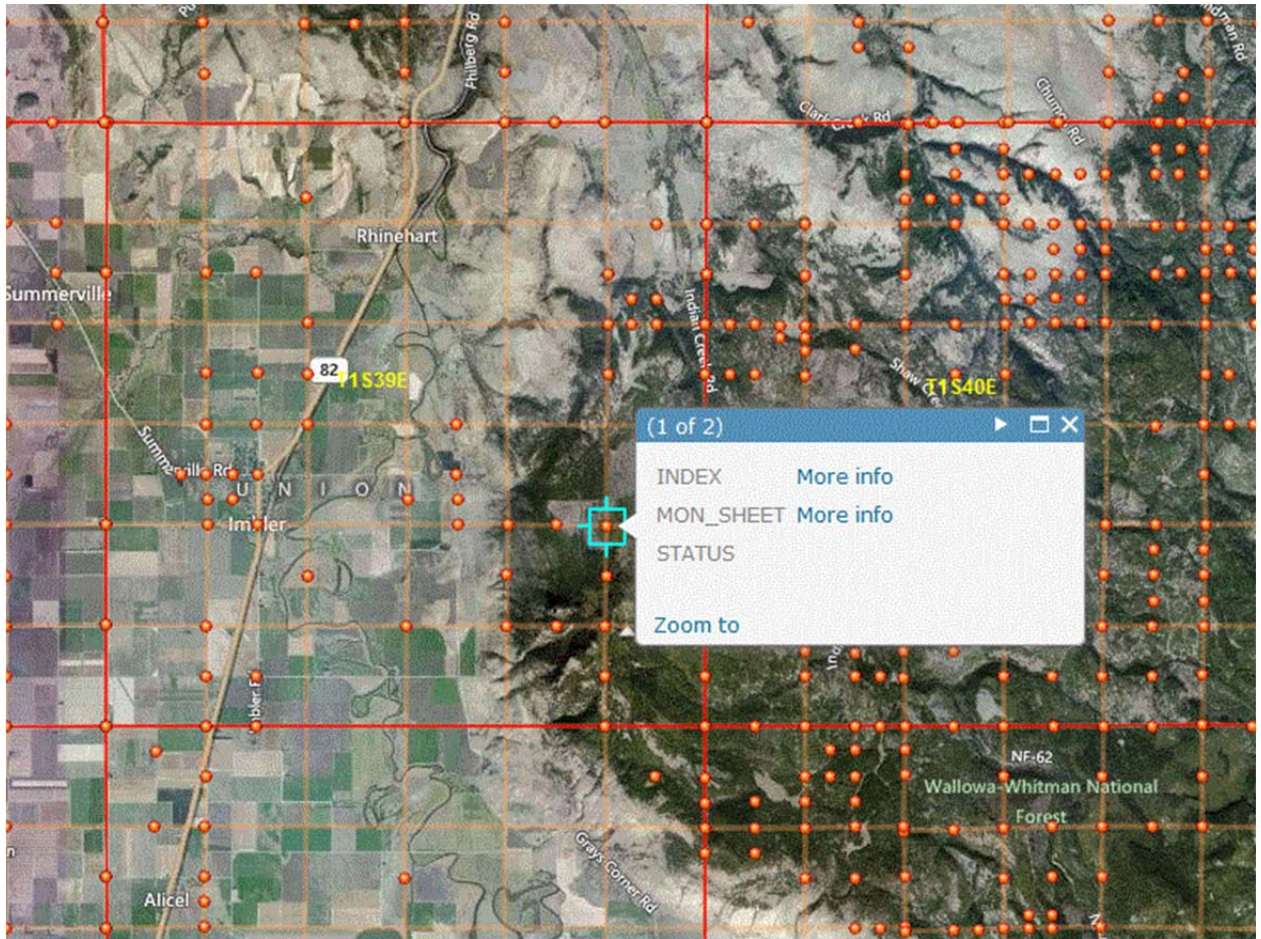
- Zoom in closer to see the Township and Range labels. Scroll upwards with the middle scroll wheel of the mouse to zoom in, downwards to zoom out.



- Zooming in to the township that you want information on, the Section Lines should appear, as well as an orange dot for corners that contain filed information.



- 4) To see available information on a corner, single left click on one of the orange dots. A popup should appear.

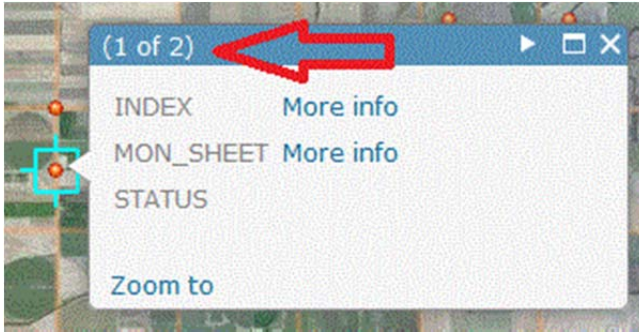


There are 3 fields available.

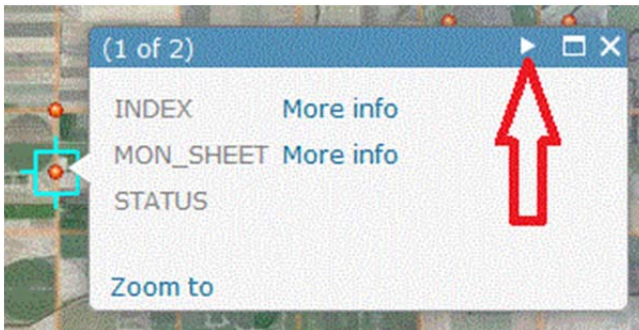
- Single clicking the “More info” hyperlink next to the “INDEX” field links you to a scanned image of the corner’s documented history.
- Clicking the “More info” hyperlink next to the “MON_SHEET” field links to a scanned image of the monumentation sheet(s). Included within these sheets are also any GPS observations that have been observed by the Union County Surveyor.
- At this time the “STATUS” field is unused. In the future, this will give an indication of the monumentation state of the corner. (i.e. substandard, monumented to standard, monumented with GPS observation)

NOTE: The indication of an orange dot on the GIS does not guarantee a corner’s existence. There are several instances of monumentation sheets filed indicating that no monument was found, or the use of a proportionate position.

- 5) Please note that if there are two corners that are in close proximity, the selection tool may select two entries. You can tell by the "(1 of 2)" in the upper left hand corner of the popup.



- 6) To scroll to the next entry, click the left arrow key.



Sometimes these refer to the same corner as there are oftentimes double entries along exteriors of townships. To ensure that the records you seek are complete, however, it is recommended that you scroll through all entries.

Please direct any questions and errors to jeff@bgbsurveyors.com