

THIS MAP WAS PREPARED FOR ASSESSMENT PURPOSE ONLY

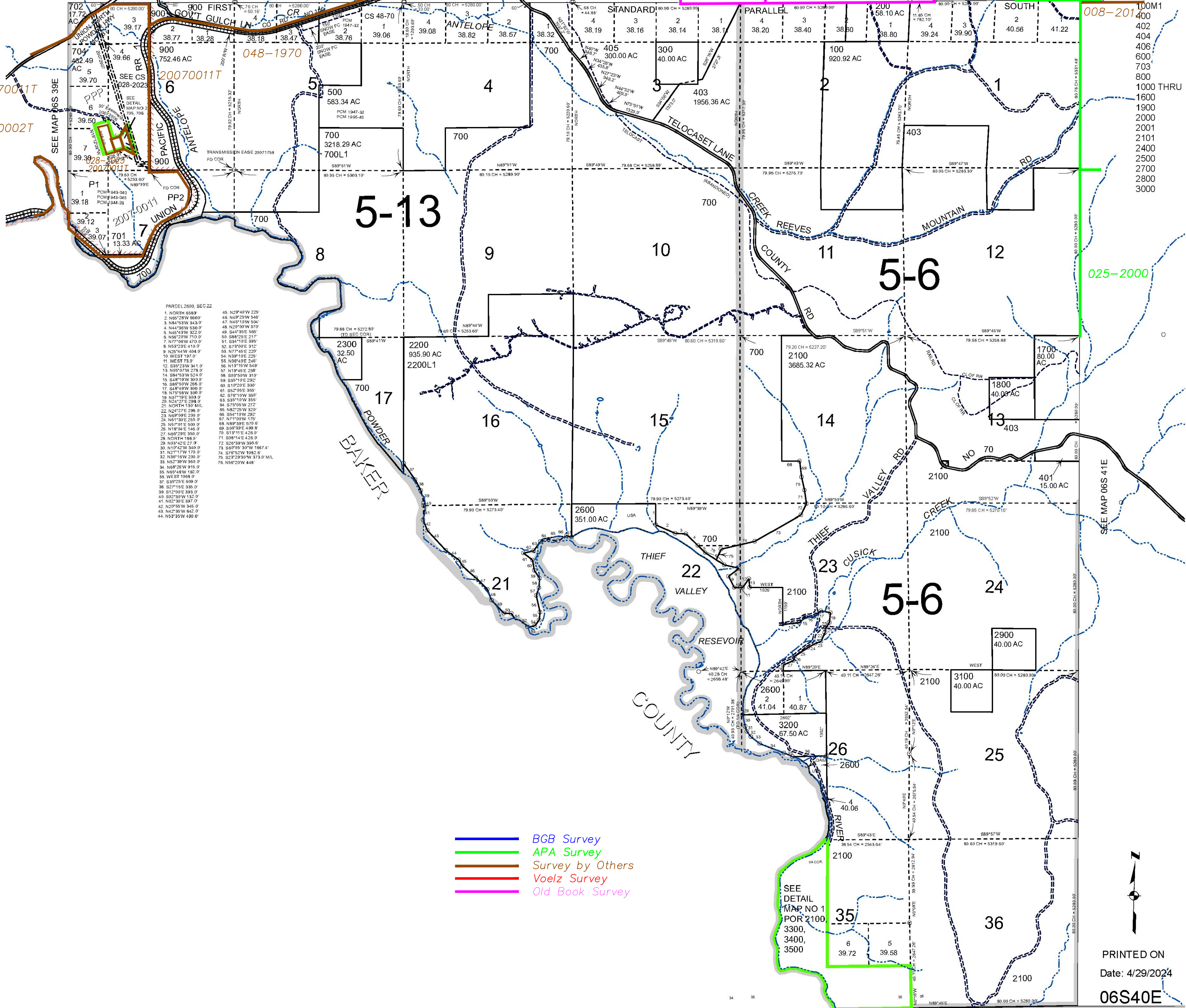
0 1,000 2,000 3,000 4,000 Feet

T.6S. R.40E. W.M.
UNION COUNTY

1" = 2000'

06S40E
& INDEX

20070011T
20090002T



PARCEL 2600, SEC 22

1. NORTH 65.80'	45. N29°49'W 225'
2. N80°20'W 660.0'	46. N45°10'W 545'
3. N84°13'W 843.0'	47. N45°10'W 545'
4. N44°30'W 530.0'	48. N20°30'W 370'
5. N40°43'W 822.0'	49. S84°13'E 690'
6. N56°20'W 710.0'	50. S88°25'E 217'
7. N7°06'W 470.0'	51. S34°10'E 390'
8. N53°23'E 410.0'	52. S73°09'E 312'
9. N23°44'W 404.0'	53. N77°45'E 220'
10. WEST 197.0'	54. N39°19'E 225'
11. WEST 73.0'	55. N58°40'E 248'
12. S32°23'W 341.0'	56. N1°15'W 549'
13. N69°07'W 278.0'	57. N19°45'E 258'
14. S84°13'W 524.0'	58. S00°00'W 510'
15. S48°19'W 300.0'	59. S35°10'E 292'
16. S90°00'W 306.0'	60. S10°23'E 330'
17. S45°19'W 306.0'	61. S52°05'E 300'
18. N7°06'W 306.0'	62. S70°10'W 330'
19. N37°19'E 309.0'	63. S35°10'W 300'
20. N27°12'E 298.0'	64. S70°05'W 272'
21. NORTH 130' M/L	65. N82°25'W 320'
22. N24°27'E 298.0'	66. S54°10'W 292'
23. N69°09'E 200.0'	67. N1°00'W 170'
24. N61°30'E 255.0'	68. N89°39'E 570.0'
25. N5°01'E 540.0'	69. S00°39'E 499.0'
26. N10°04'E 148.0'	70. S51°11'E 425.0'
27. N60°29'E 350.0'	71. S09°14'E 425.0'
28. NORTH 195.0'	72. S20°00'W 895.0'
29. N03°42'E 21.0'	73. S60°05'30"W 1667.4'
30. N10°42'W 340.0'	74. S75°52'W 1062.0'
31. N25°17'W 170.0'	75. S23°29'30"W 373.0' M/L
32. N38°16'W 200.0'	76. N66°20'W 448'
33. N53°19'W 360.0'	
34. N68°26'W 915.0'	
35. N69°49'W 192.0'	
36. WEST 1065.0'	
37. S39°29'E 600.0'	
38. S27°18'E 330.0'	
39. S12°00'E 393.0'	
40. S02°30'W 132.0'	
41. N02°30'E 39.0'	
42. N20°55'W 340.0'	
43. N42°30'W 842.0'	
44. N53°35'W 480.0'	

Cancelled
100M1
400
402
404
406
600
700
800
1000 THRU
1600
1900
2000
2001
2101
2400
2500
2700
2800
3000

- BGB Survey
- APA Survey
- Survey by Others
- Voelz Survey
- Old Book Survey



PRINTED ON
Date: 4/29/2024

06S40E