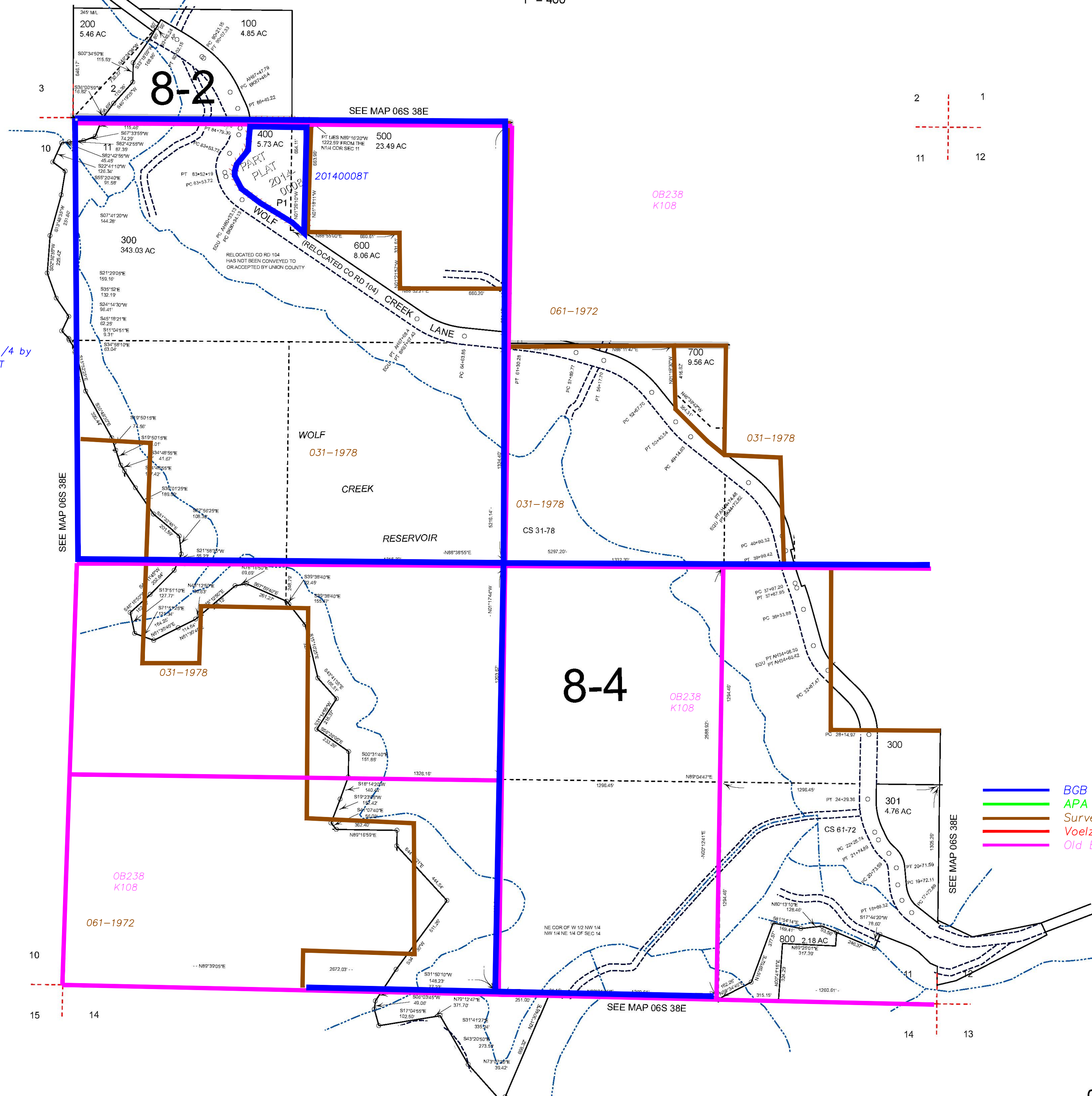


THIS MAP WAS PREPARED FOR ASSESSMENT PURPOSE ONLY



SECTION 11 T.6S. R.38E. W.M. UNION COUNTY 1" = 400'

06S38E11



Subdivision of NW 1/4 by 20140008T

- BGB Survey
- APA Survey
- Survey by Others
- Voelz Survey
- Old Book Survey

Revised: MA 07/08/2021

06S38E11