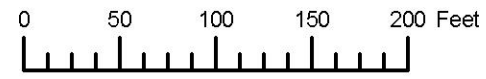


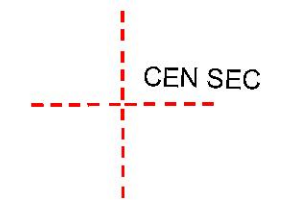
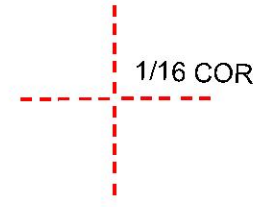
THIS MAP WAS PREPARED FOR ASSESSMENT PURPOSE ONLY



N.E.1/4 S.W.1/4 SEC.24 T.3S. R.38E. W.M.
UNION COUNTY
1" = 100'

03S38E24CA

Cancelled
200A1

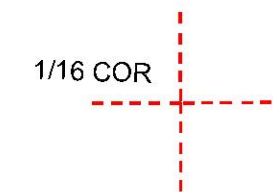
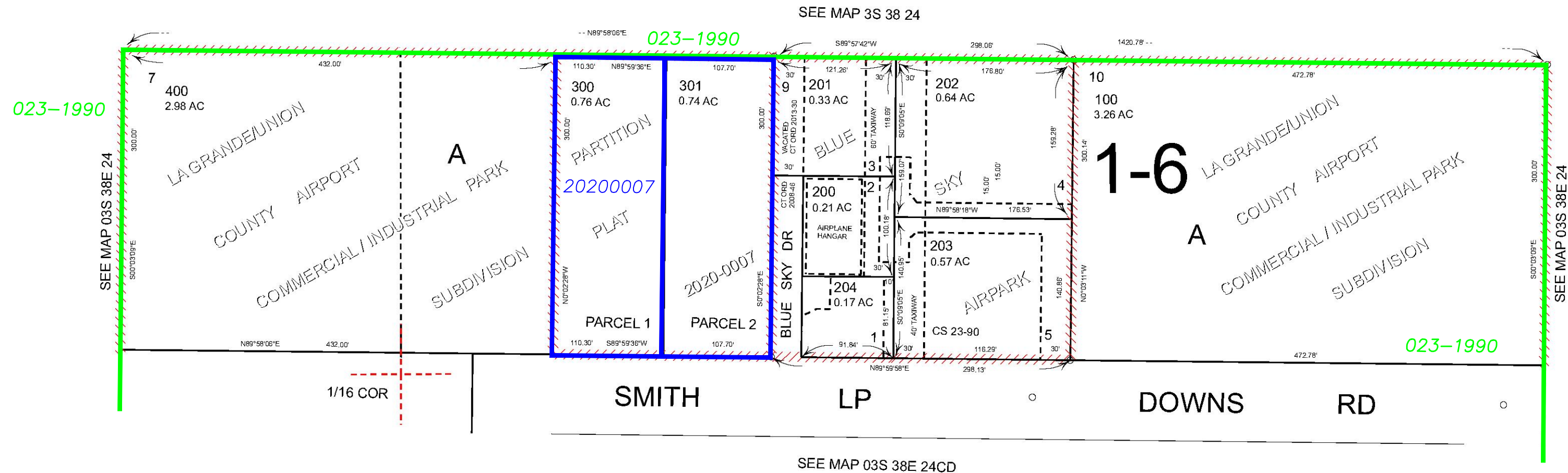


Subdivisions on
This Page

LA GRANDE/UNION COUNTY
AIRPORT COMMERCIAL/INDUSTRIAL
PARK SUBDIVISION

BLUE SKY AIRPARK

- BGB Survey
- APA Survey
- Survey by Others
- Voelz Survey
- Old Book Survey



Revised: MA
09/14/2020

03S38E24CA