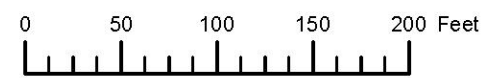


THIS MAP WAS PREPARED FOR ASSESSMENT PURPOSE ONLY



N.W. 1/4 S.W. 1/4 SEC. 9 T. 3S. R. 38E. W.M.
UNION COUNTY
1" = 100'

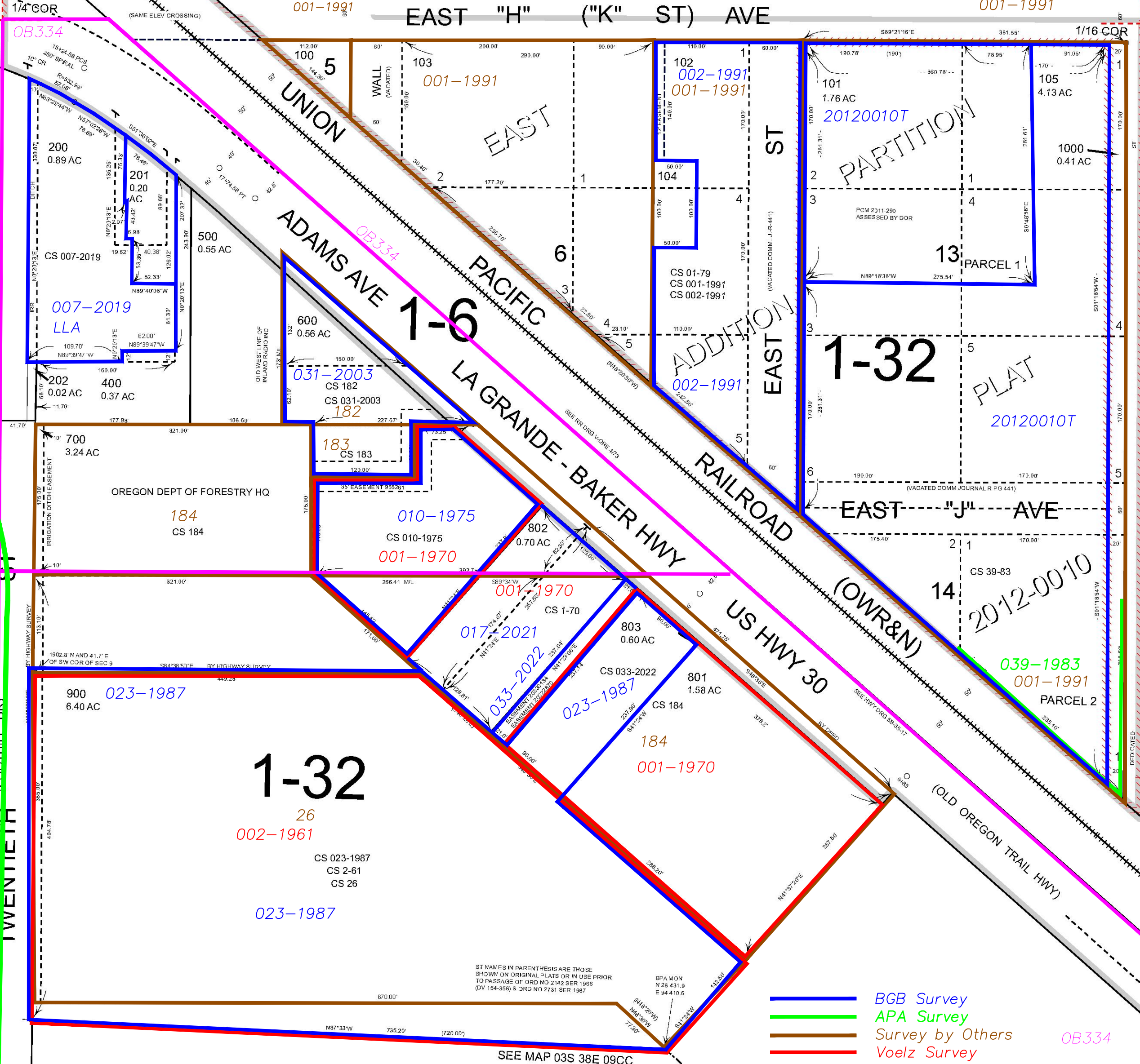
03S38E09CB
LA GRANDE

Cancelled
101M1
300
800

HWY 30

EAST "H" ("K" ST) AVE

001-1991



SEE MAP 03S 38E 09

SEE MAP 03S 38E 08DA

004-2016

Subdivisions on This Page
EAST ADDITION

- BGB Survey
- APA Survey
- Survey by Others
- Voelz Survey
- Old Book Survey

OB334

PRINTED ON
Date: 3/3/2023

03S38E09CB
LA GRANDE

ST NAMES IN PARENTHESES ARE THOSE SHOWN ON ORIGINAL PLATS OR IN USE PRIOR TO PASSAGE OF ORD NO 2-42 SER 1968 (DV 154-358) & ORD NO 2731 SER 1987

SEE MAP 03S 38E 09CC