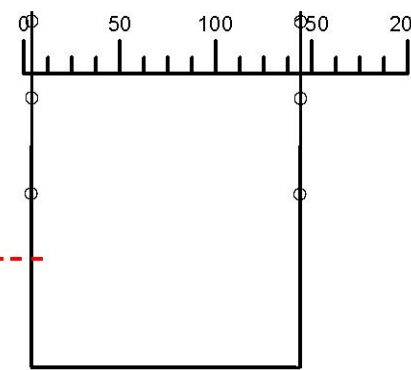


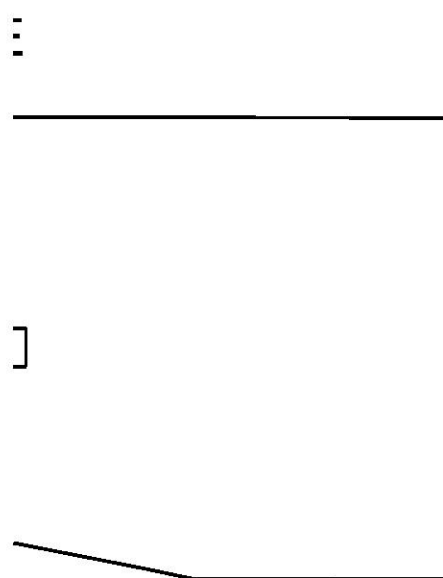
THIS MAP WAS PREPARED FOR ASSESSMENT PURPOSE ONLY



N.W. 1/4 N.W. 1/4 SEC. 8 T. 3S. R. 38E W.M.  
UNION COUNTY  
1" = 100'

03S38E08BB  
LA GRANDE

Cancelled  
1800  
6101  
6102  
6300  
6400  
7501  
13501



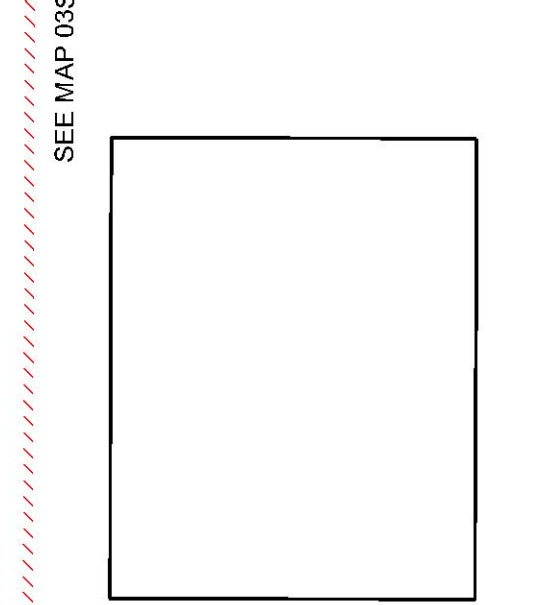
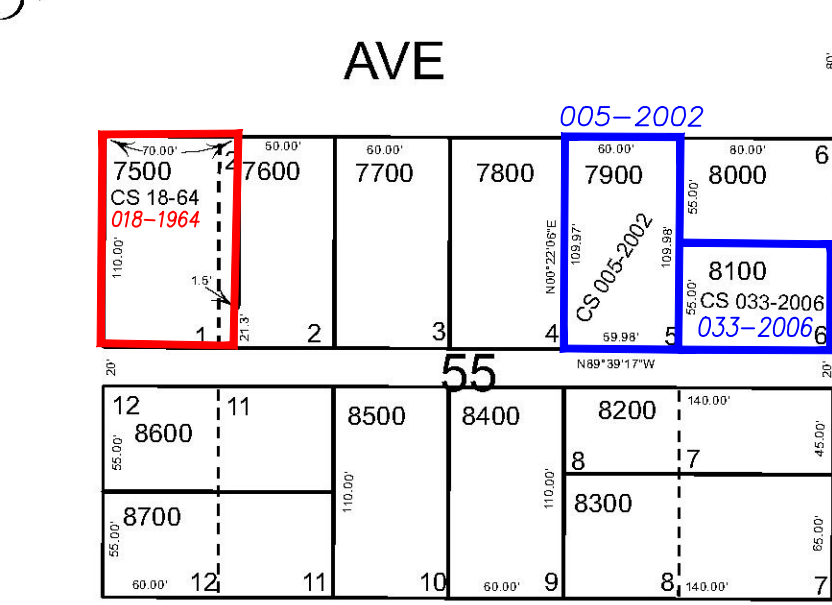
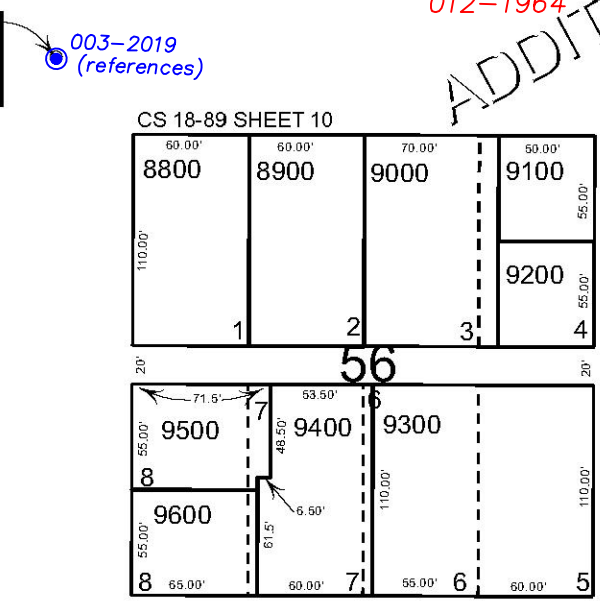
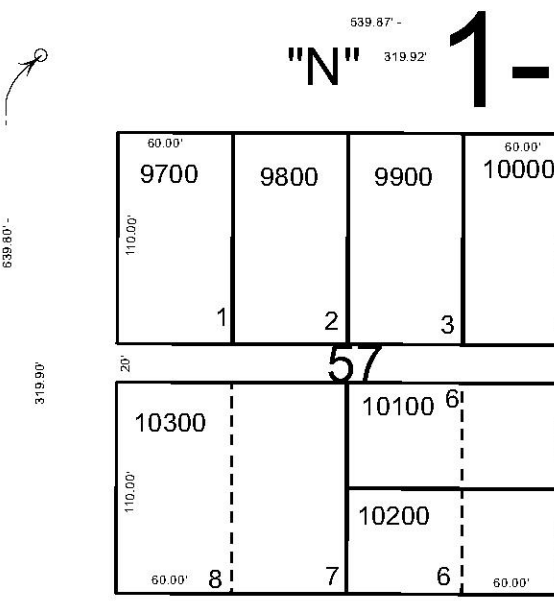
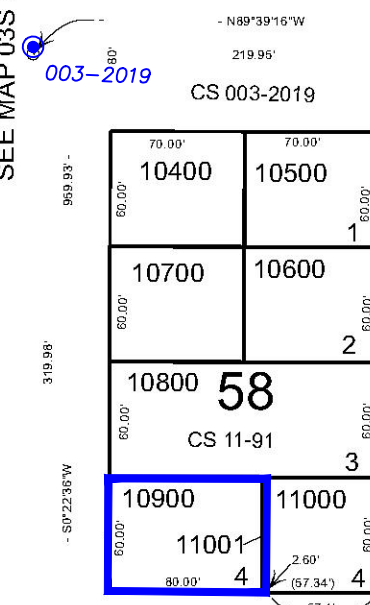
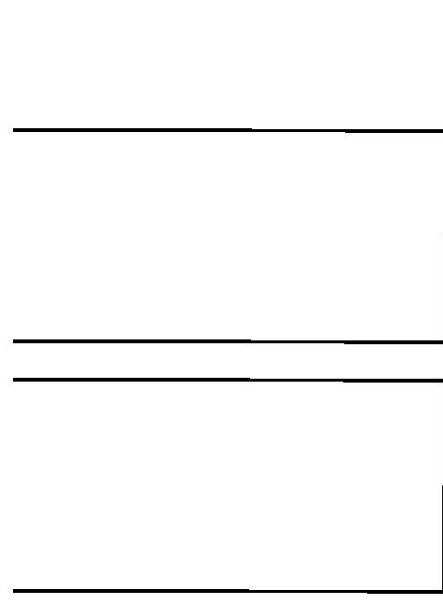
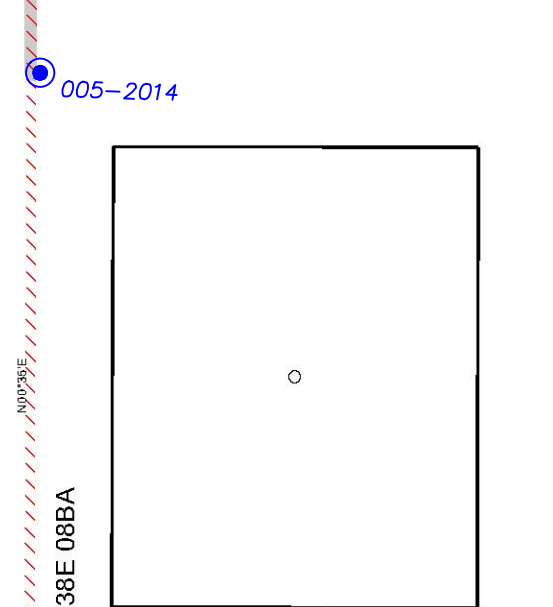
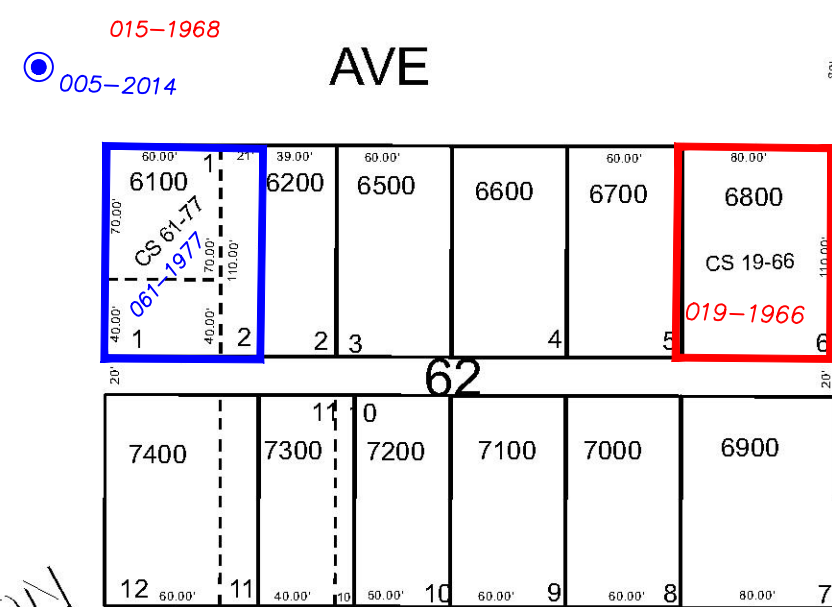
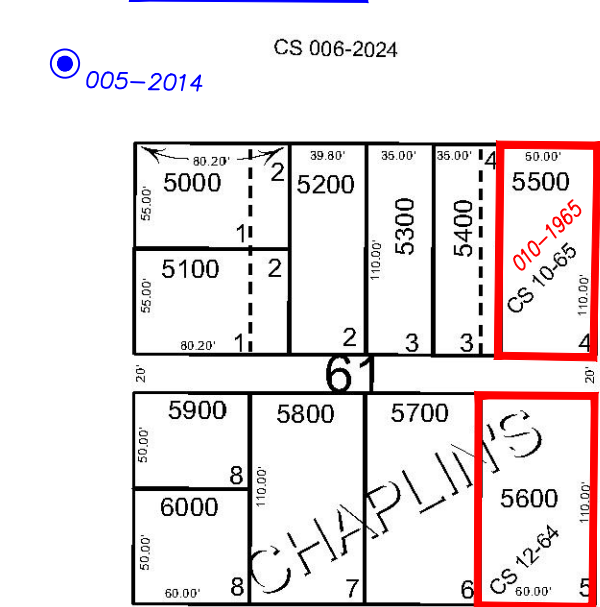
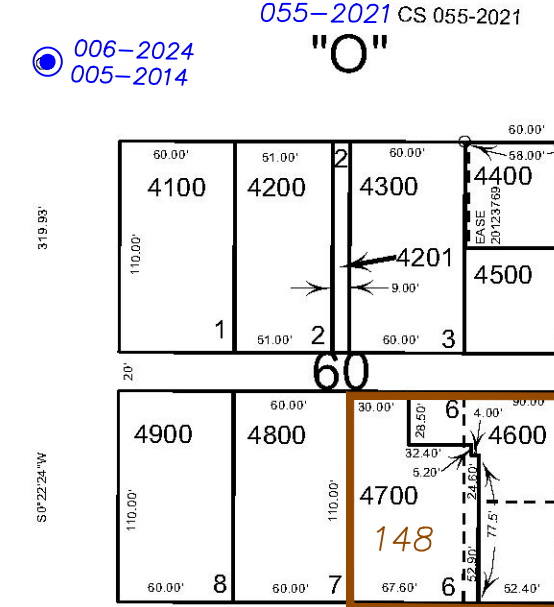
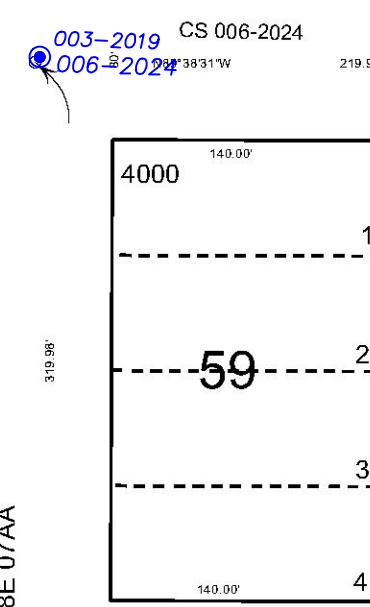
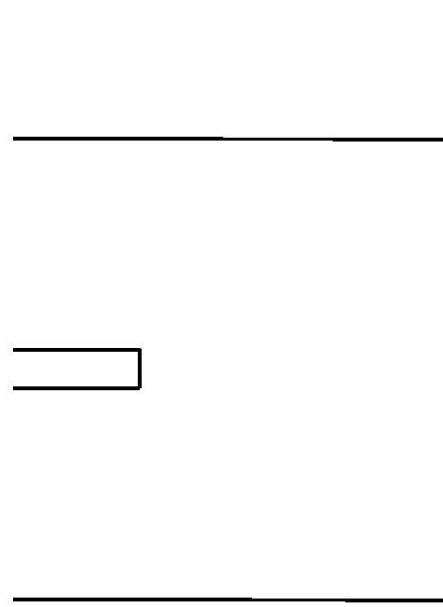
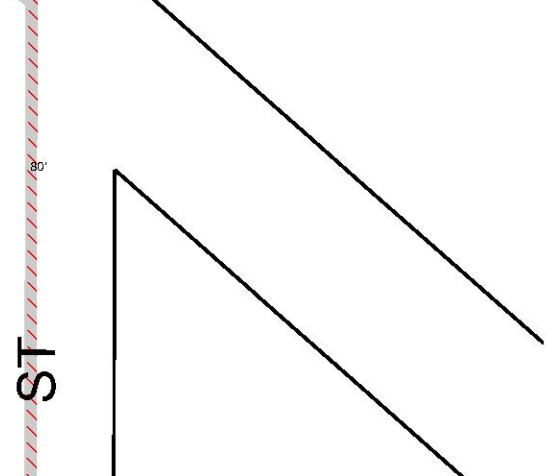
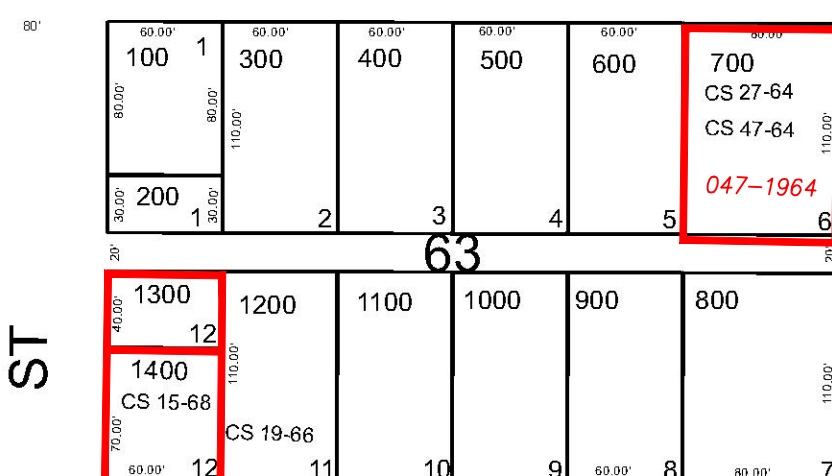
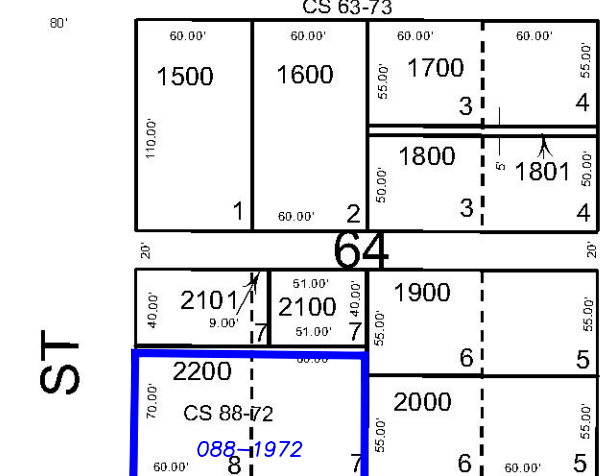
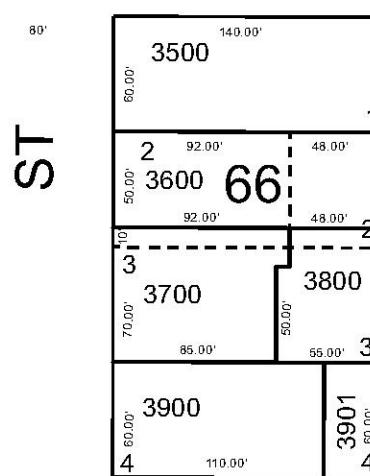
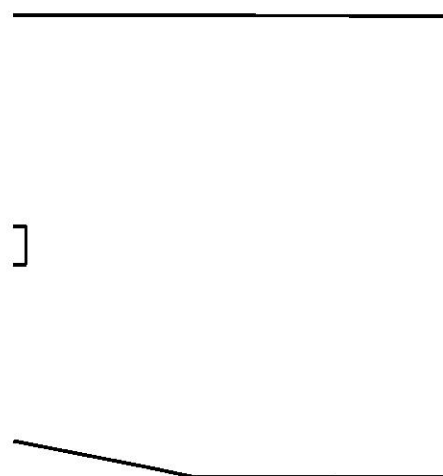
014-2013 PENN ST

014-2013

SEE MAP 03S 38E 05CC  
014-2013

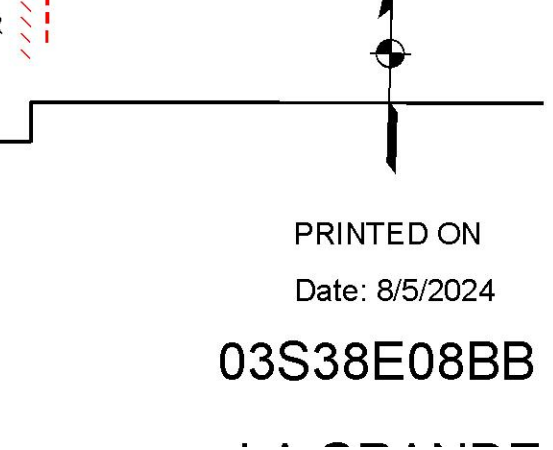
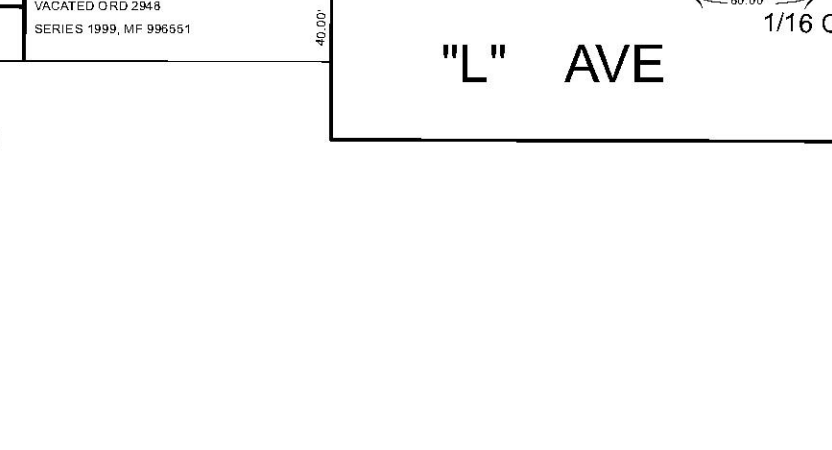
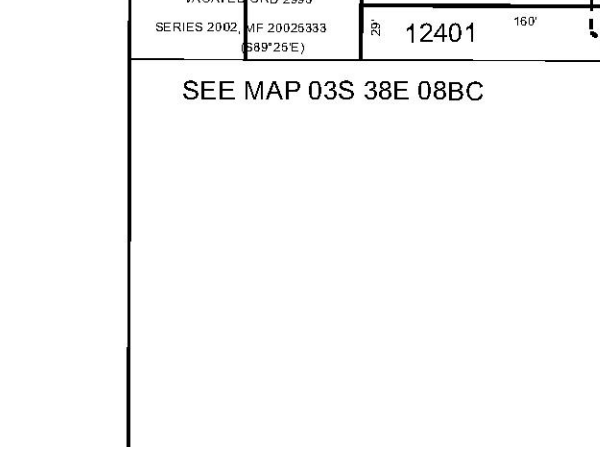
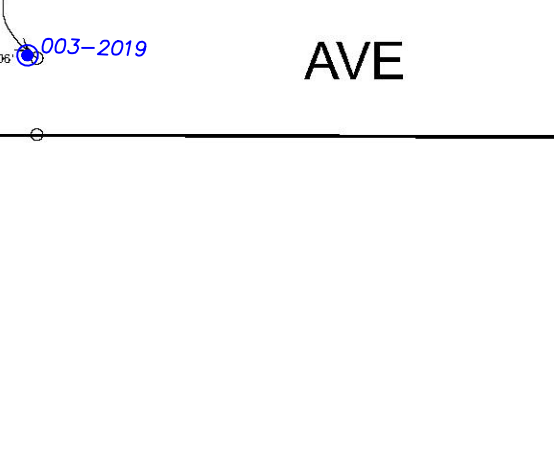
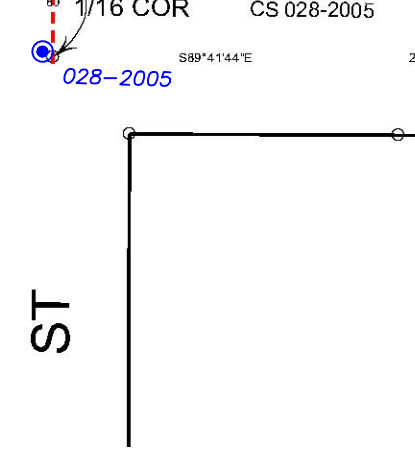
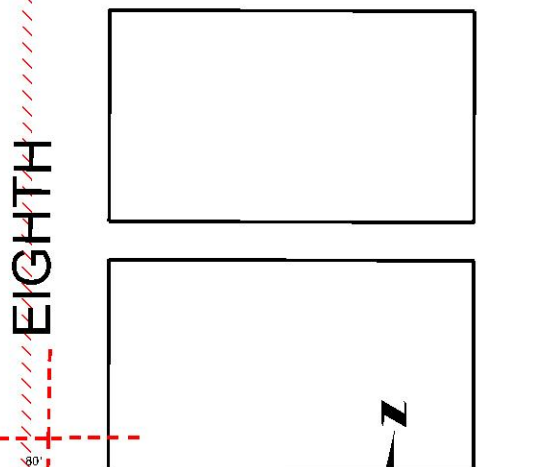
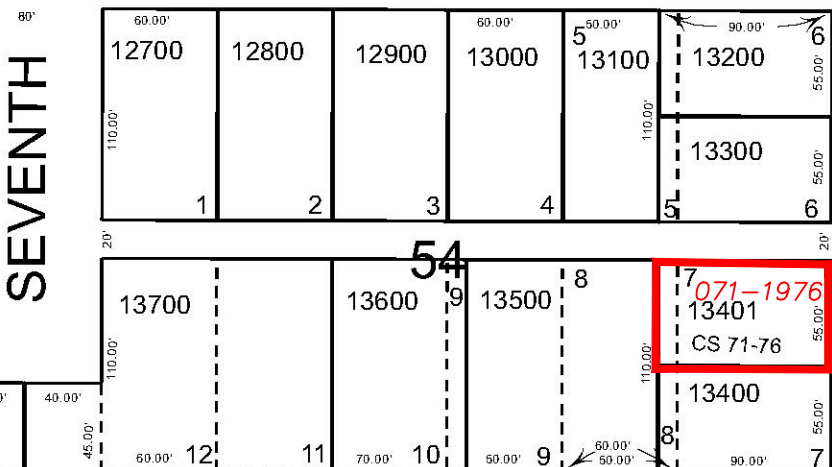
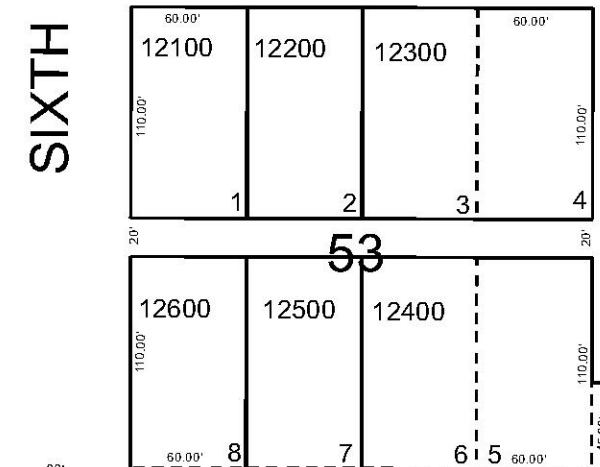
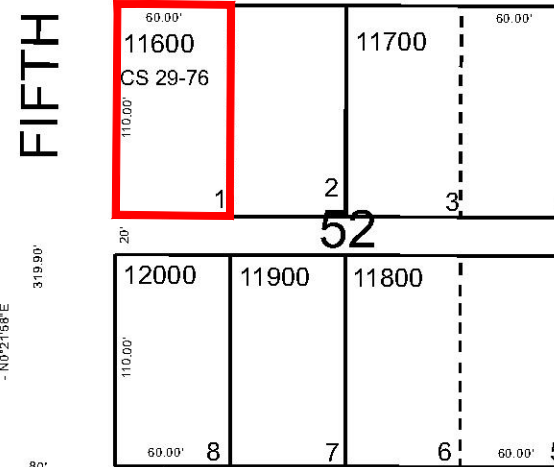
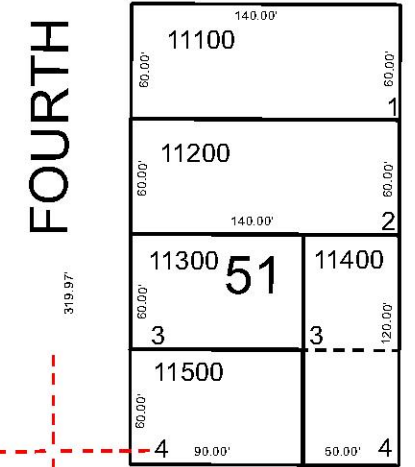
AVE

1/16 COR



Subdivisions on This Page  
CHAPLIN'S ADDITION

- BGB Survey
- APA Survey
- Survey by Others
- Voelz Survey
- Old Book Survey



PRINTED ON  
Date: 8/5/2024

03S38E08BB