

THIS MAP WAS PREPARED FOR
ASSESSMENT PURPOSE ONLY

SUPPLEMENTAL MAP NO. 1
SW 1/4 SW 1/4 SECTION 05 T03S R38E WM
UNION COUNTY

03S 38E 05CC
SUPPLEMENTAL MAP NO. 1
SHEET 8

Sheet 8 of 15

BASIS OF BEARING

Forward bearing as published by the U.S.C.
and G.S. from Δ COLLEGE to Δ VALLEY
Dated 1946.

SCALE: 1"=8'

NK West Condominiums

Condominiums situated in Lot 3 and a portion of Lots 2 and 4
of Block 106, Chaplin's Addition to the City of La Grande, Union County, Oregon

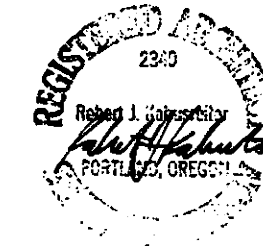
Microfilm Number 20081859T
Plat Cabinet Number C987-D002



601 S W 2ND AVE. SUITE 1200
PORTLAND OR 97204
1503 223 9030 | 1503 223 6381

MelvaneyG2.com

ARCHITECT:

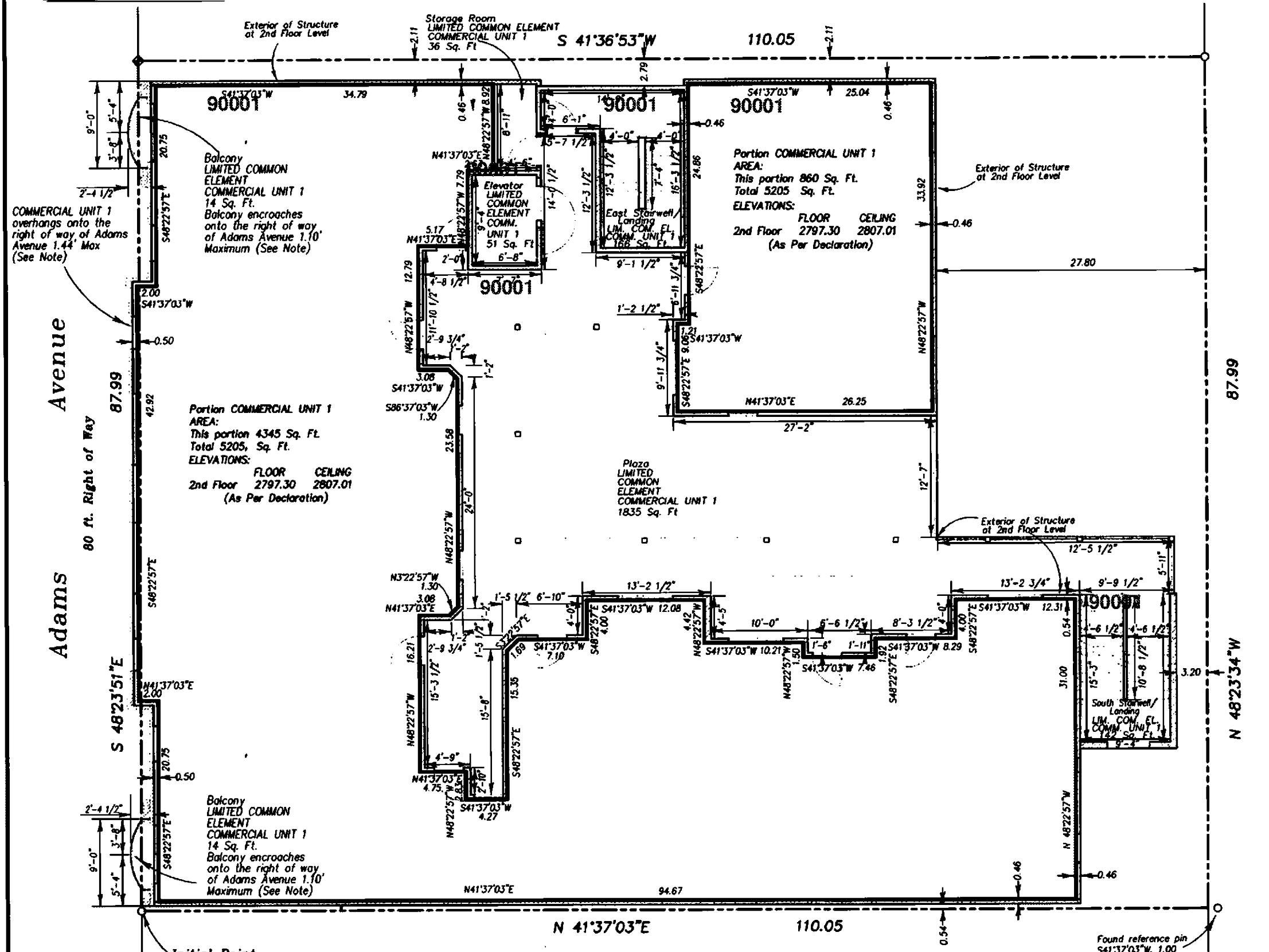


PROJECT NUMBER: 02-0120A
PROJECT MANAGER: ROBERT KABUSREITER

**NK WEST
CONDOMINIUMS**
1204, 1206 and 1208
ADAMS AVENUE
LA GRANDE, OREGON 97850

**SECOND
FLOOR PLAN**
A2.03

Sheet 8 of 15



NOTE:
Deed microfilm number 20046238 is an agreement between NKW Limited Partnership and the City of La Grande which allows the encroachment of Balcony, Building Overhang, Awning and Fire Department Connection with certain conditions as outlined in the document.

Elevation Datum
Elevations shown on this plat are based on NGVD 29 datum, taken by direct observation of Bench Mark L-85, a brass plaque in the first platform on the steps to City Hall on the Northerly side of the building.

LEGEND

- ◆ Found brass screw with brass washer marked "OPLS 2219" set by survey number 008-2004
- Found 5/8" iron pin with plastic cap marked "BGB SURVEY MARKER" set by survey number 008-2004
- Property Line

— BGB Survey
— APA Survey
— Survey by Others
— Voelz Survey
— Old Book Survey

Revised: 9C
6/24/2008

03S 38E 05CC
SUPPLEMENTAL MAP NO. 1
SHEET 8