

UNION COUNTY

1" = 100'

LA GRANDE

- Cancelled
- 4601
- 6600
- 7001
- 7601
- 7602
- 7605
- 7606
- 7607
- 8300
- 10000
- 10200
- 11001
- 11100
- 11200

VE

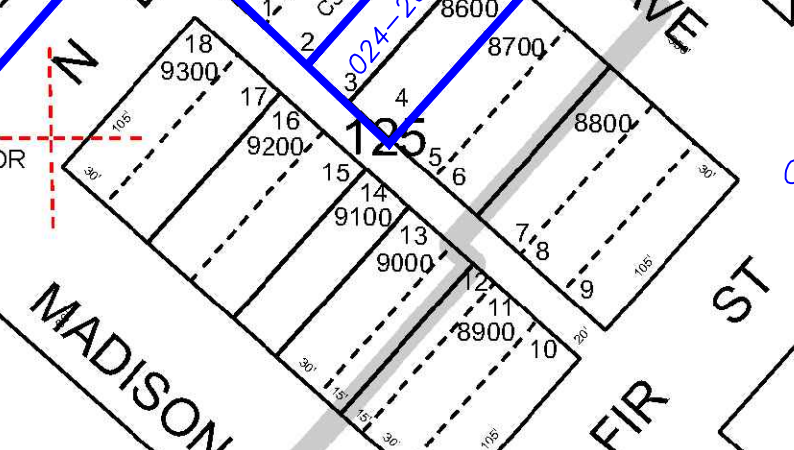
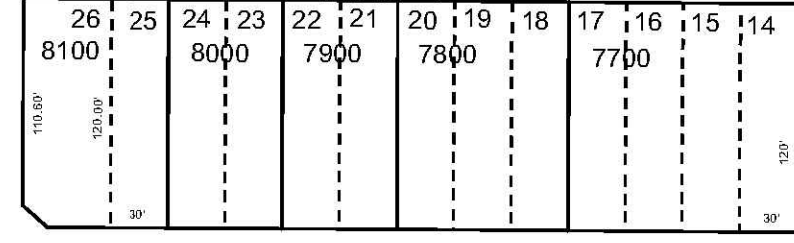
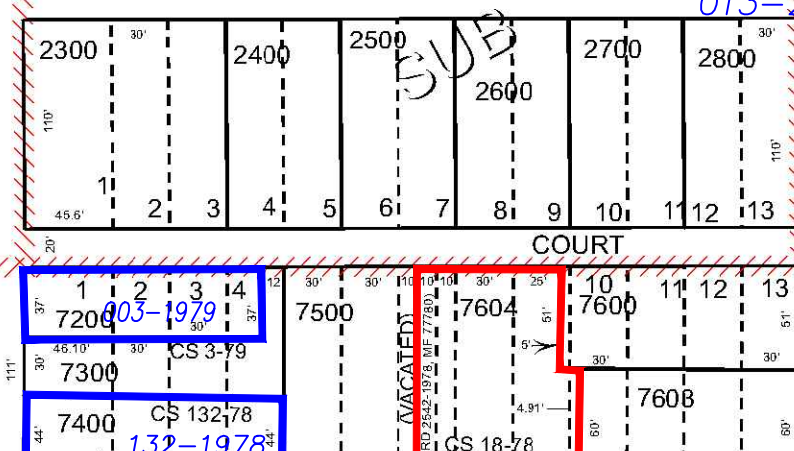
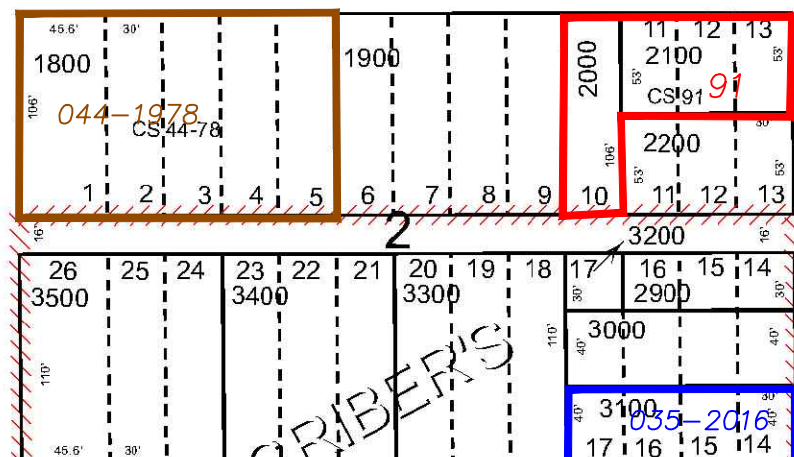
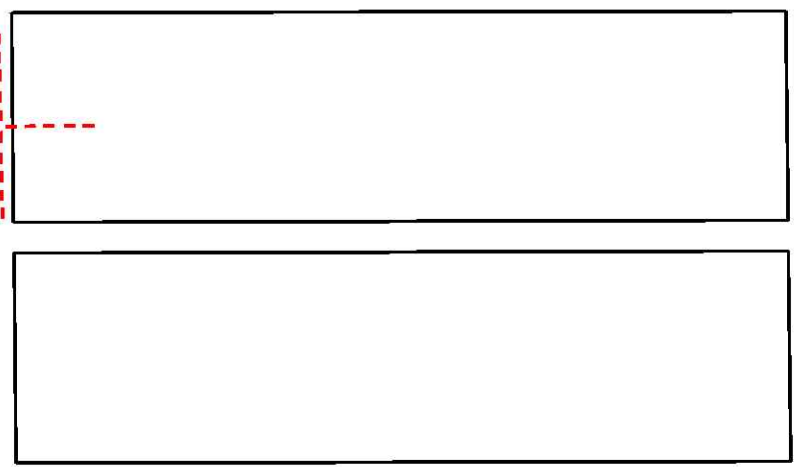
1/16 COR

ST

DEPOT

N

SEE MAP 03S 38E 05CB



ST

FIR

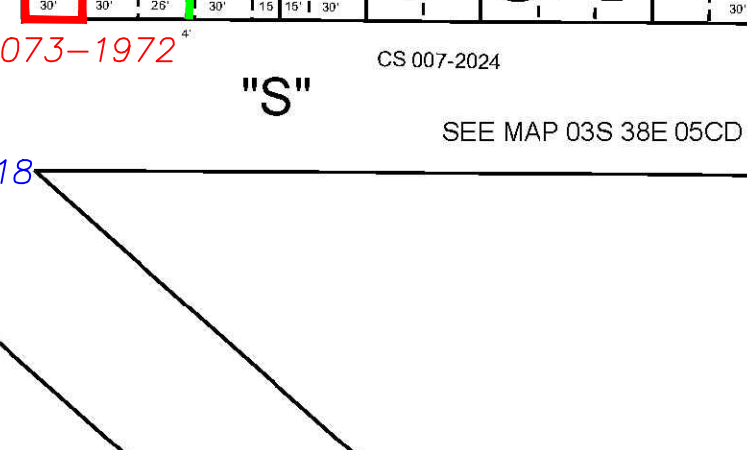
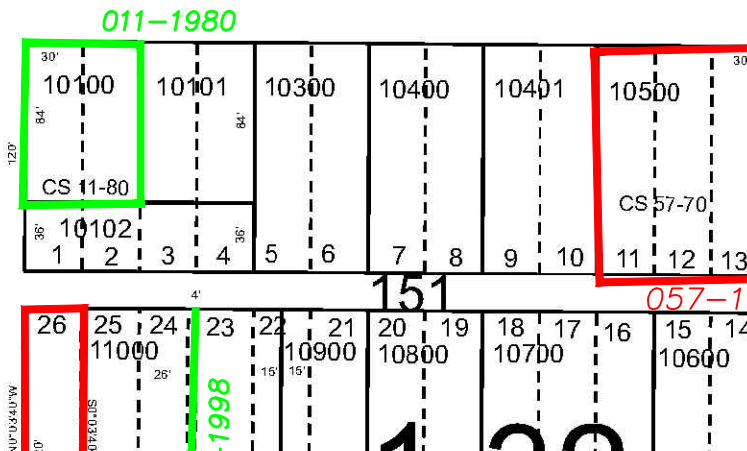
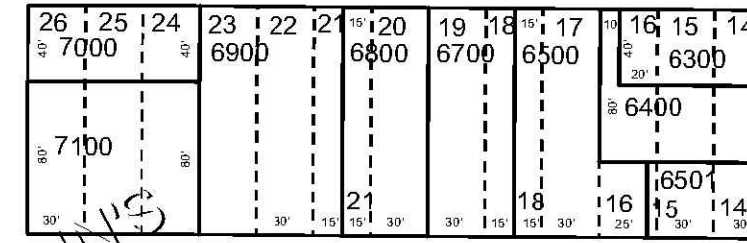
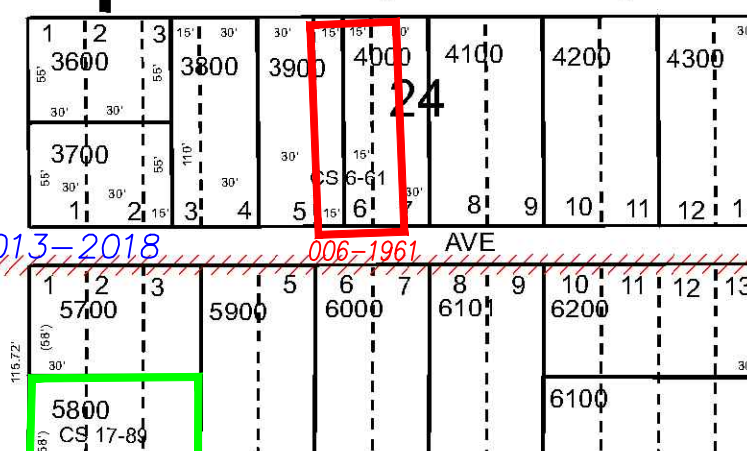
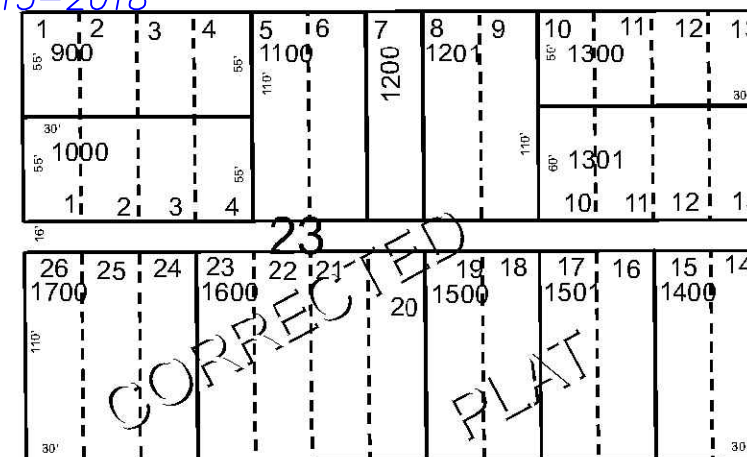
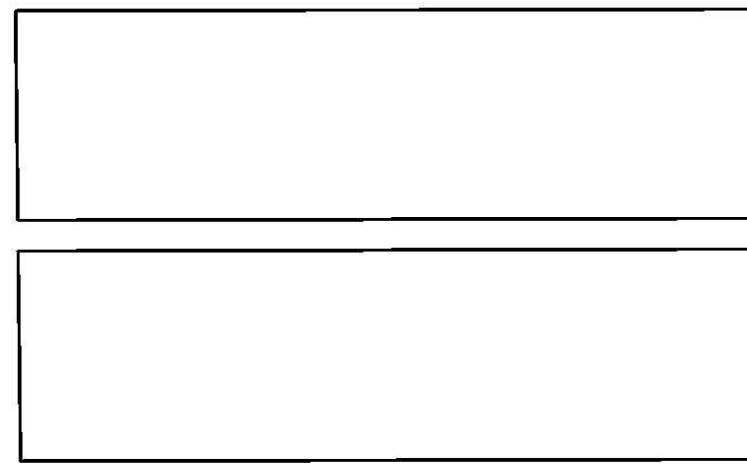
N

N

N

ST

ST



ST

GREENWOOD

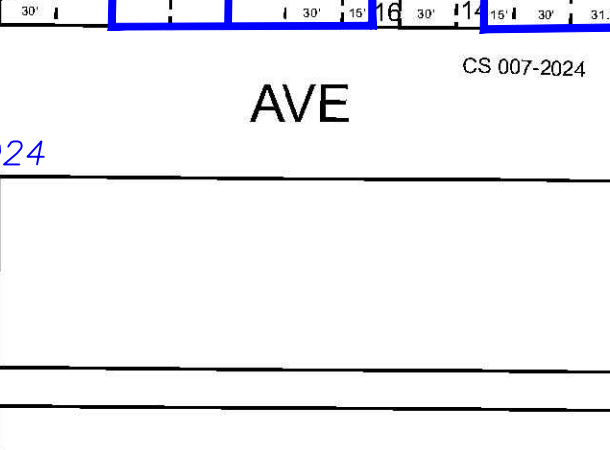
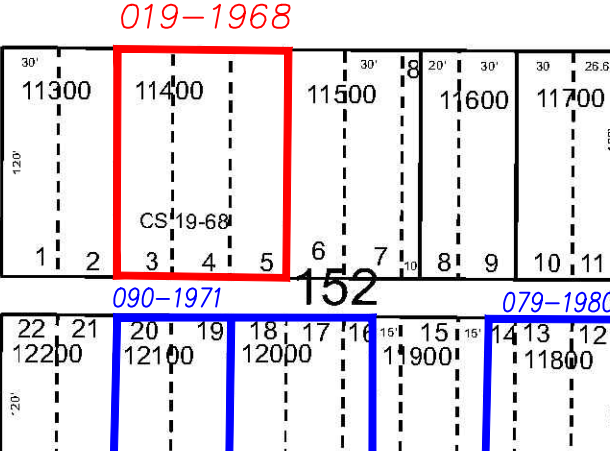
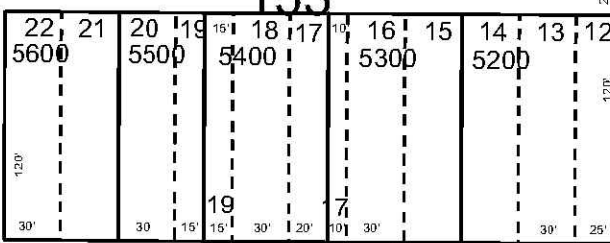
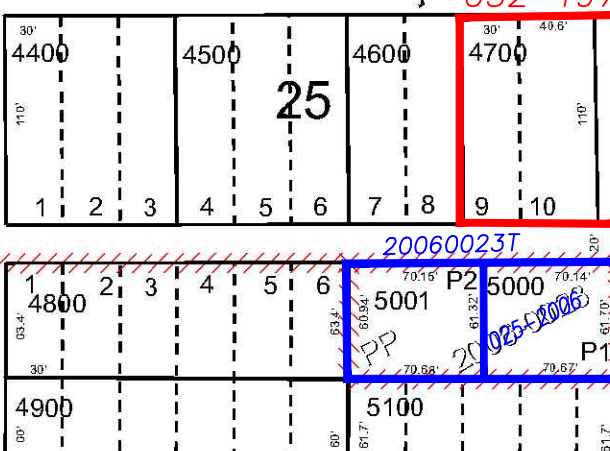
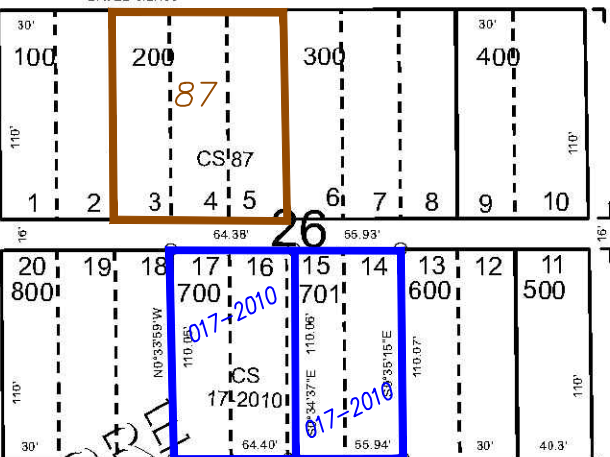
N

N

N

ST

ST



ST

SPRUCE

N

N

N

ST

ST

CEN SEC

SEE MAP 03S 38E 05DB

Subdivisions on this page
 CHAPLIN'S ADDITION
 CORRECTED PLAT OF
 PREDMORE ADDITION
 SCRIBER'S SUBDIVISION

- BGB Survey
- APA Survey
- Survey by Others
- Voelz Survey
- Old Book Survey

PRINTED ON
 Date: 8/5/2024

03S38E05CA

LA GRANDE