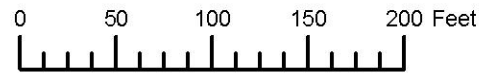
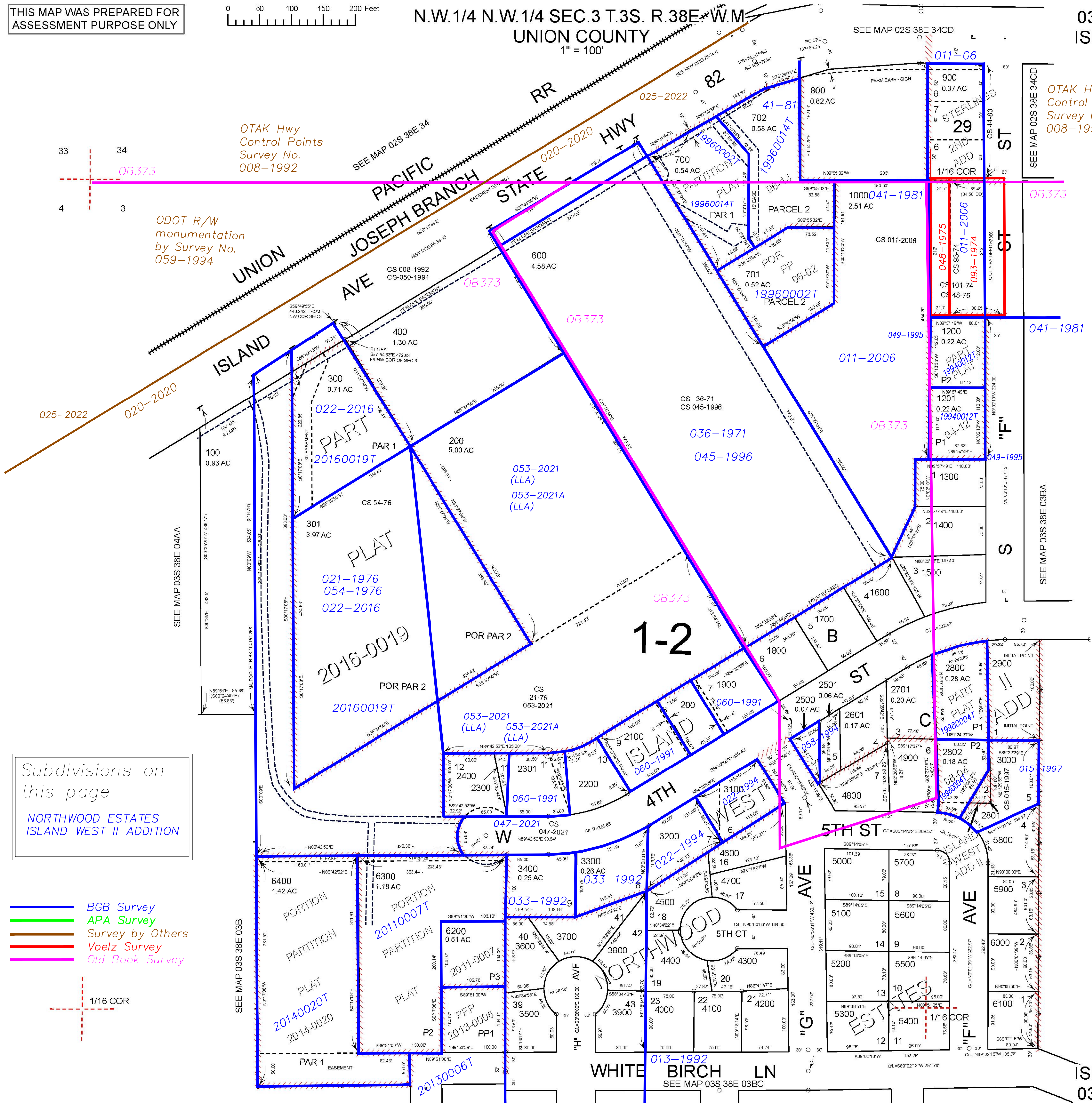


THIS MAP WAS PREPARED FOR ASSESSMENT PURPOSE ONLY



N.W. 1/4 N.W. 1/4 SEC. 3 T. 3S. R. 38E W.M.  
UNION COUNTY  
1" = 100'

03S38E03BB  
ISLAND CITY

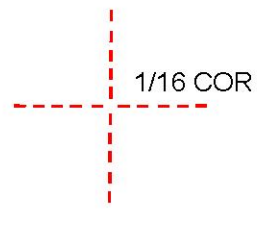


OTAK Hwy Control Points Survey No. 008-1992

ODOT R/W monumentation by Survey No. 059-1994

Subdivisions on this page  
NORTHWOOD ESTATES ISLAND WEST II ADDITION

- BGB Survey
- APA Survey
- Survey by Others
- Voelz Survey
- Old Book Survey



Cancelled  
500  
1100  
2000  
2001  
2002  
2201  
2502  
2600  
2700  
2901  
3001  
3002

OTAK Hwy Control Points Survey No. 008-1992

Revised: MA  
04/27/2022

ISLAND CITY  
03S38E03BB