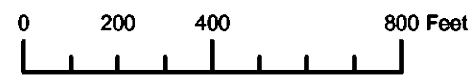


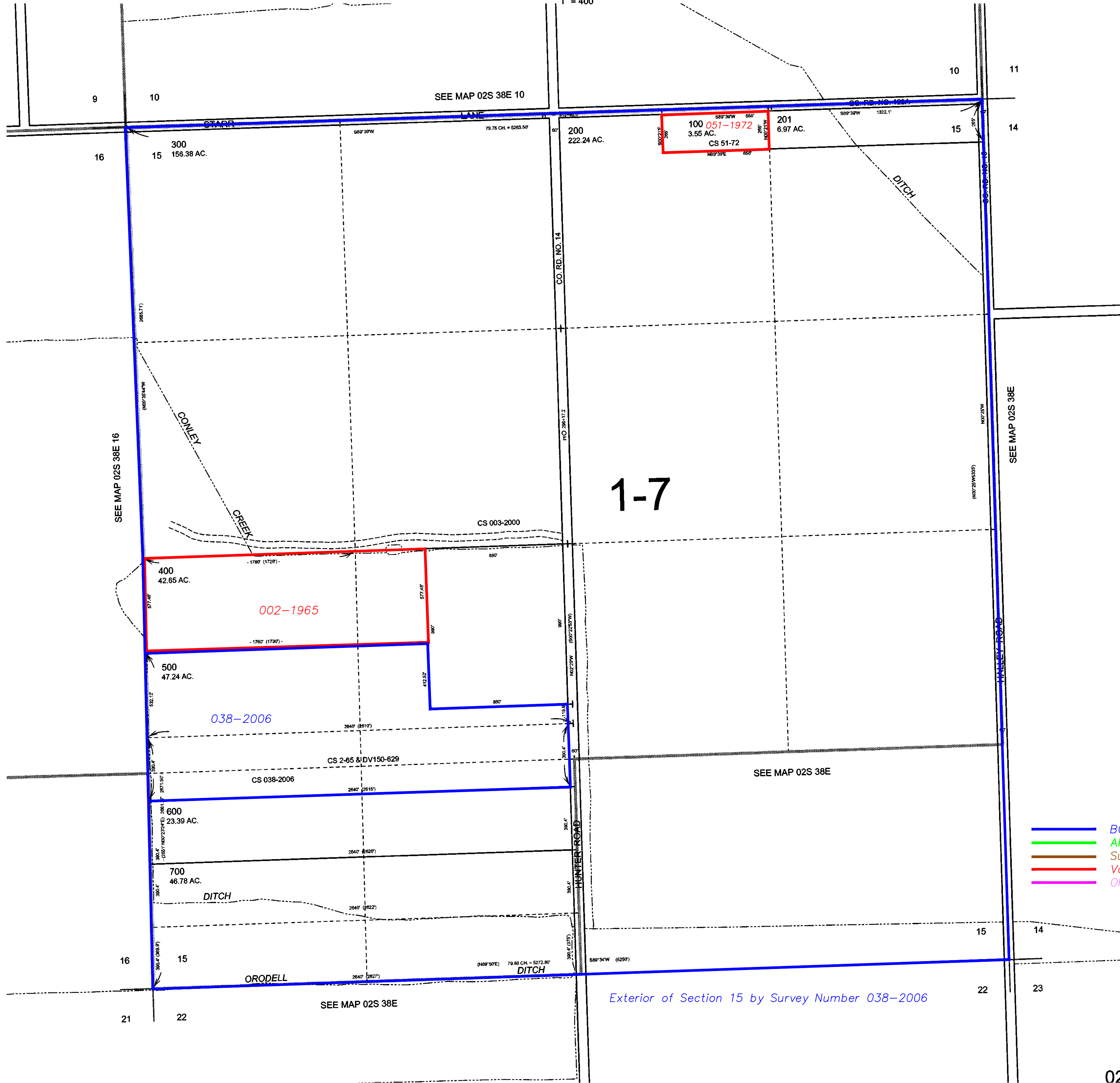
THIS MAP WAS PREPARED FOR ASSESSMENT PURPOSE ONLY



SECTION 15 T.02S. R.38E. W.M. UNION COUNTY

02S 38E 15

1" = 400'



100 051-1972 3.55 AC. CS 51-72

400 42.65 AC. 002-1965

500 47.24 AC. 038-2006

600 23.39 AC. CS 038-2006

700 46.78 AC. DITCH

1-7

- BGB Survey
- APA Survey
- Survey by Others
- Voelz Survey
- Old Book Survey

Exterior of Section 15 by Survey Number 038-2006

Revised 9C 3/13/2007

02S 38E 15