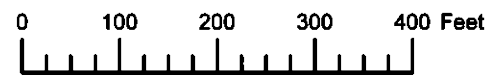
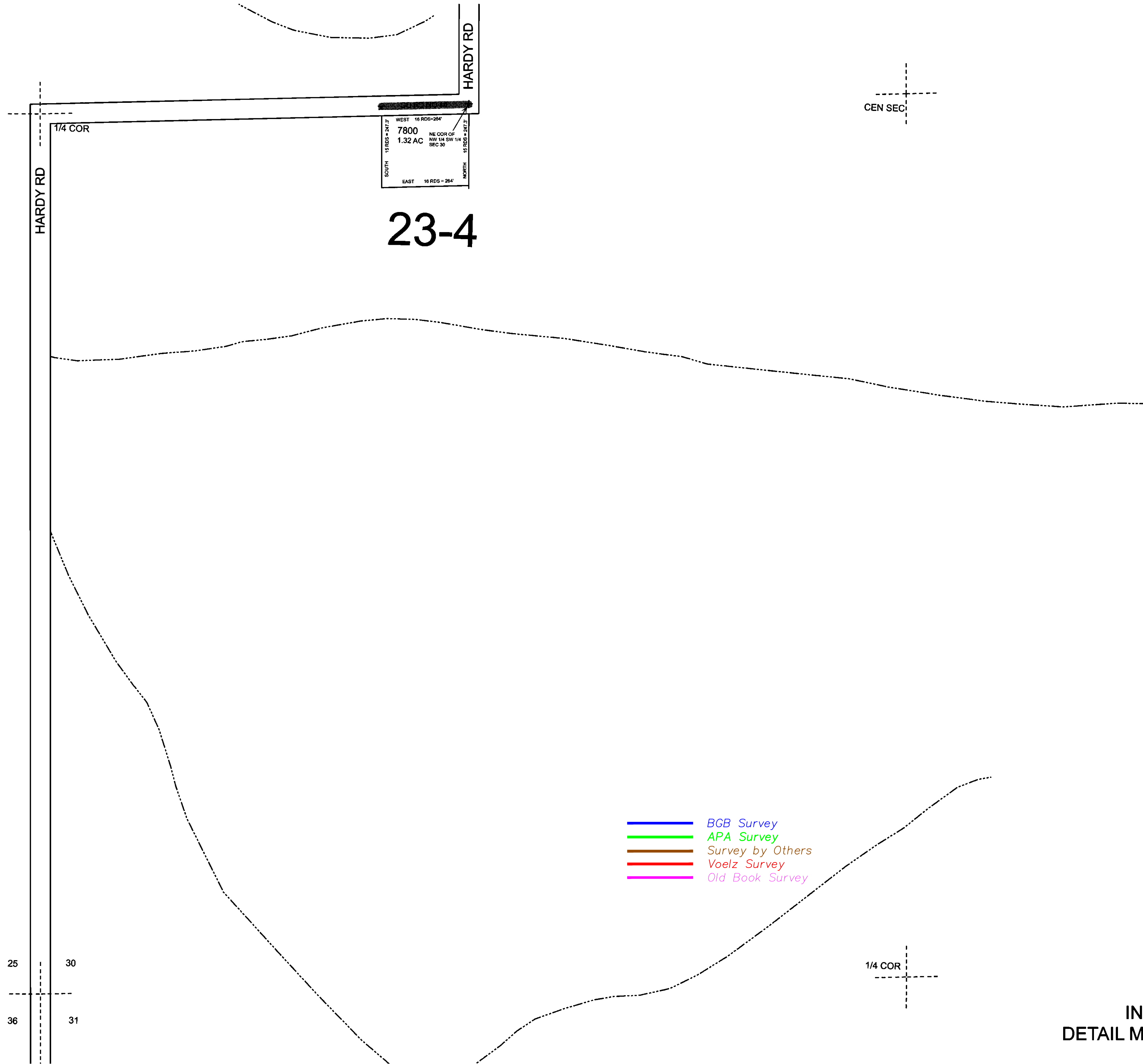


THIS MAP WAS PREPARED FOR ASSESSMENT PURPOSE ONLY



DETAIL MAP NO. 5  
T.2N. R.40E. W.M.  
UNION COUNTY  
1" = 200'

02N40E  
DETAIL MAP NO 5  
IN SEC. 30



WEST 16 RDS = 264'  
7800 NE COR OF  
1.32 AC NW 1/4 SW 1/4  
SEC 30  
SOUTH 15 RDS = 247.5' NORTH 15 RDS = 247.5'  
EAST 16 RDS = 264'

23-4

CEN SEC

- BGB Survey
- APA Survey
- Survey by Others
- Voelz Survey
- Old Book Survey

25 30  
36 31

1/4 COR

Revised: SH  
11/21/2014

IN SEC. 30  
DETAIL MAP NO 5  
02N40E