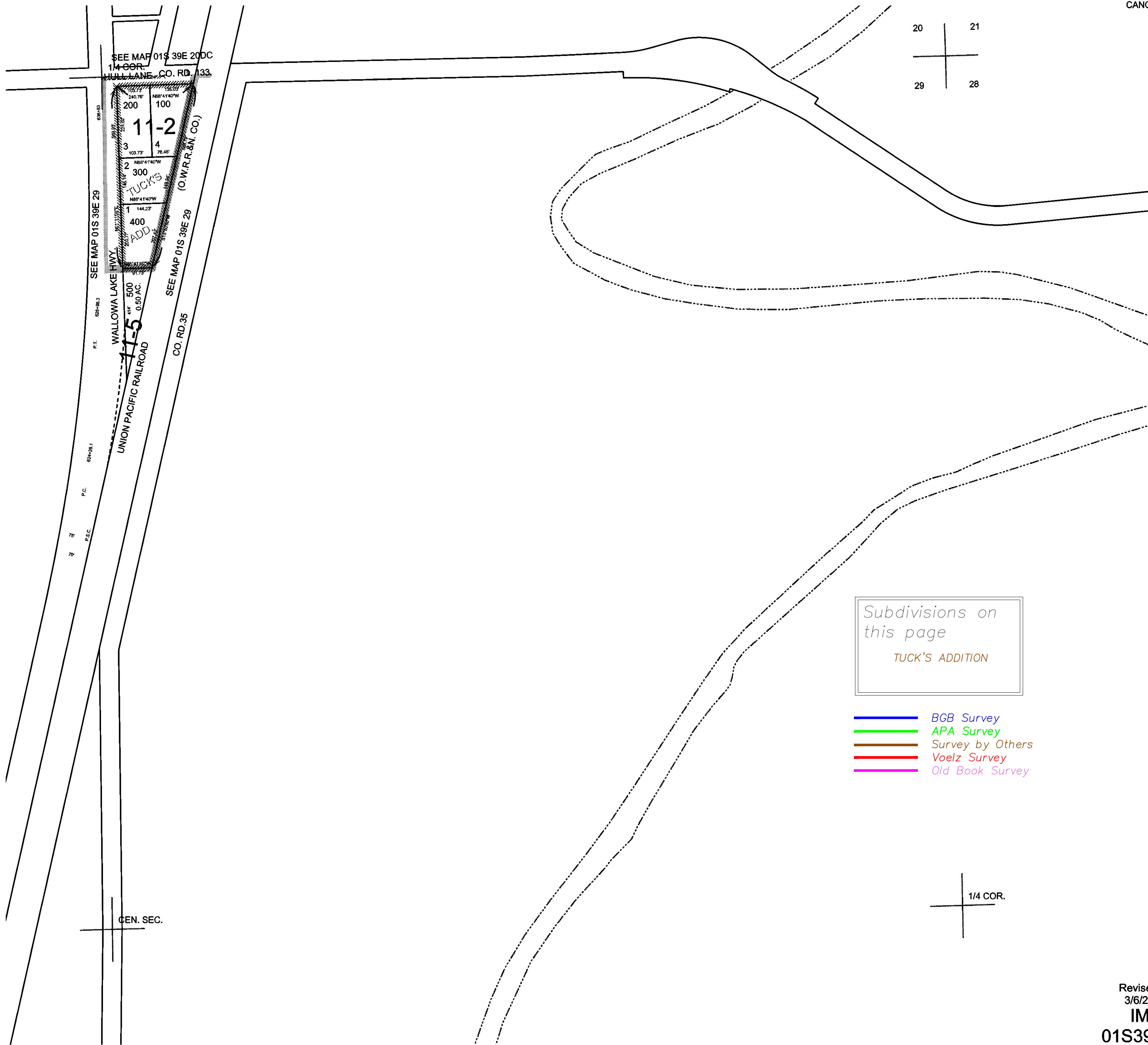


THIS MAP WAS PREPARED FOR ASSESSMENT PURPOSE ONLY

0 100 200 400 Feet

N.E. 1/4 SEC. 29 T. 1S. R. 39E. W.M.
UNION COUNTY
1" = 200'

01S39E29A
IMBLER
CANCELLED:



20 21
29 28

Subdivisions on this page
TUCK'S ADDITION

- BGB Survey
- APA Survey
- Survey by Others
- Voelz Survey
- Old Book Survey

1/4 COR.

Revised 9C
3/6/2008
IMBLER
01S39E29A