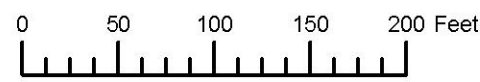


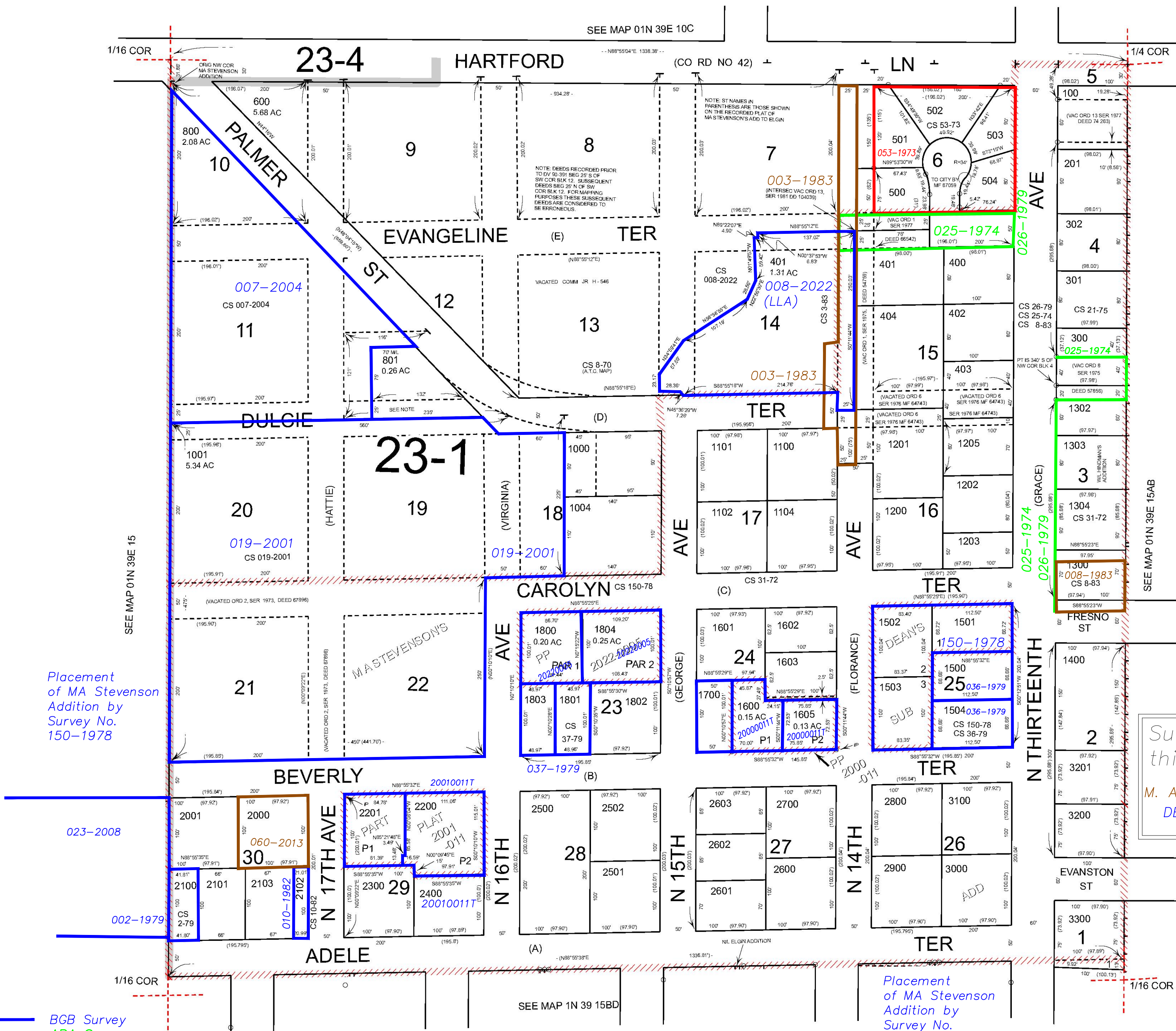
THIS MAP WAS PREPARED FOR ASSESSMENT PURPOSE ONLY



N.E. 1/4 N.W. 1/4 SEC. 15 T.1N. R.39E. W.M.
UNION COUNTY
1" = 100'

01N39E15BA
ELGIN

- Cancelled
- 200
- 202
- 601
- 602
- 603
- 700
- 900
- 1002
- 1003
- 1005
- 1006
- 1103
- 1105
- 1204
- 1301
- 1604
- 1900
- 2401
- 3400 THRU
- 4201



Placement of MA Stevenson Addition by Survey No. 150-1978

Placement of MA Stevenson Addition by Survey No. 150-1978

Subdivisions on this page
M. A. STEVENSON ADDITION
DEAN'S SUBDIVISION

- BGB Survey
- APA Survey
- Survey by Others
- Voelz Survey
- Old Book Survey

Placement of MA Stevenson Addition by Survey No. 150-1978

Revised: MA
04/27/2022

ELGIN
01N39E15BA