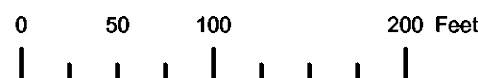
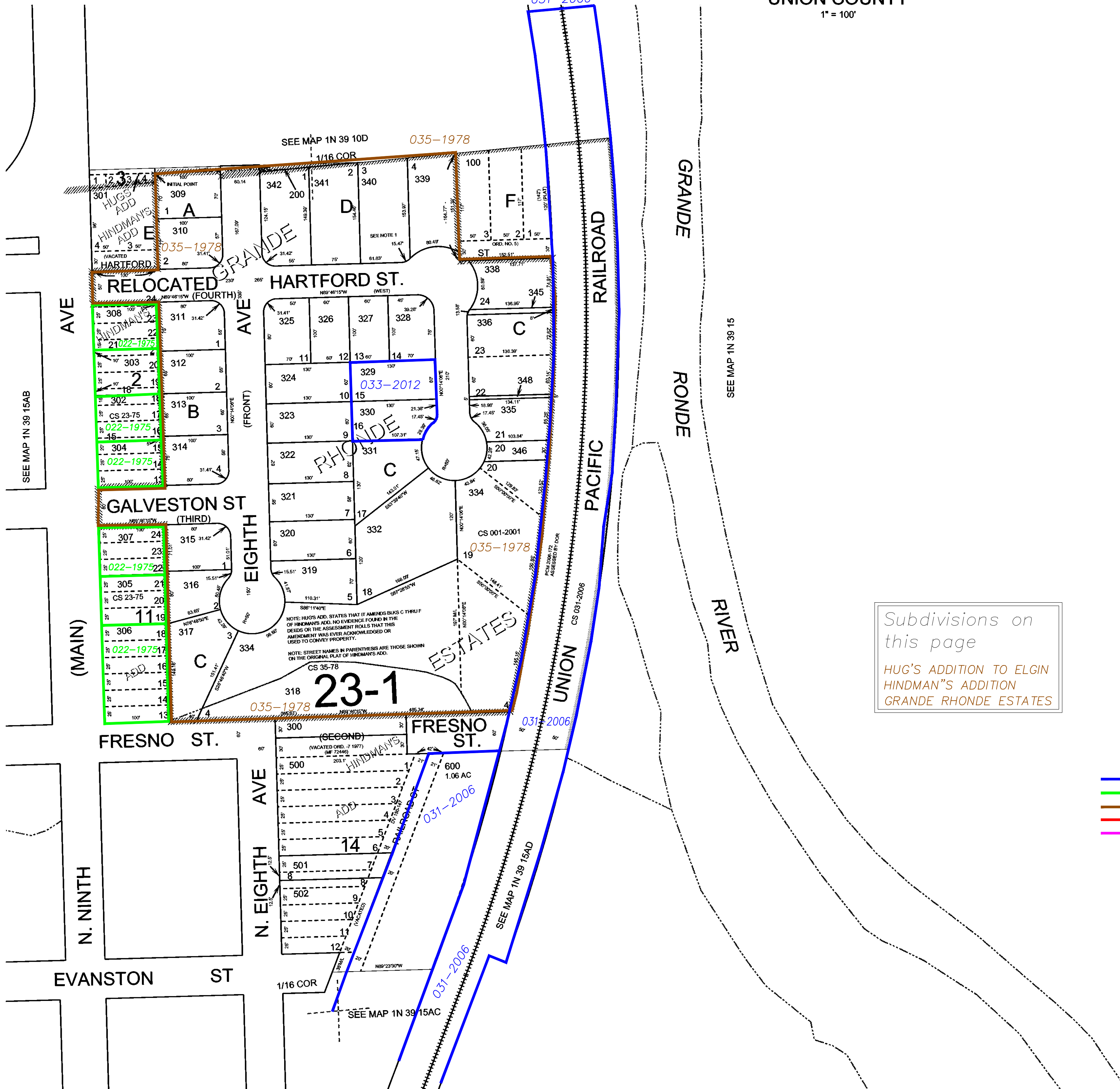
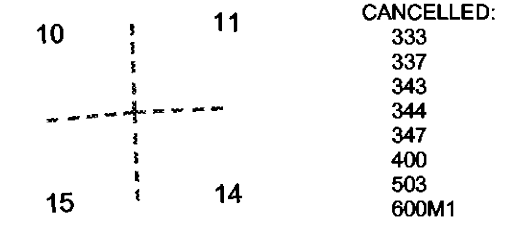


THIS MAP WAS PREPARED FOR ASSESSMENT PURPOSE ONLY



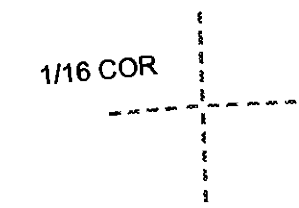
N.E. 1/4 N.E. 1/4 SEC. 15 T. 1N. R. 39E. W.M.
UNION COUNTY
1" = 100'

01N39E15AA
ELGIN



Subdivisions on this page
HUG'S ADDITION TO ELGIN
HINDMAN'S ADDITION
GRANDE RHONDE ESTATES

- BGB Survey
- APA Survey
- Survey by Others
- Voelz Survey
- Old Book Survey



Revised:bc
3/5/2010

ELGIN
01N39E15AA