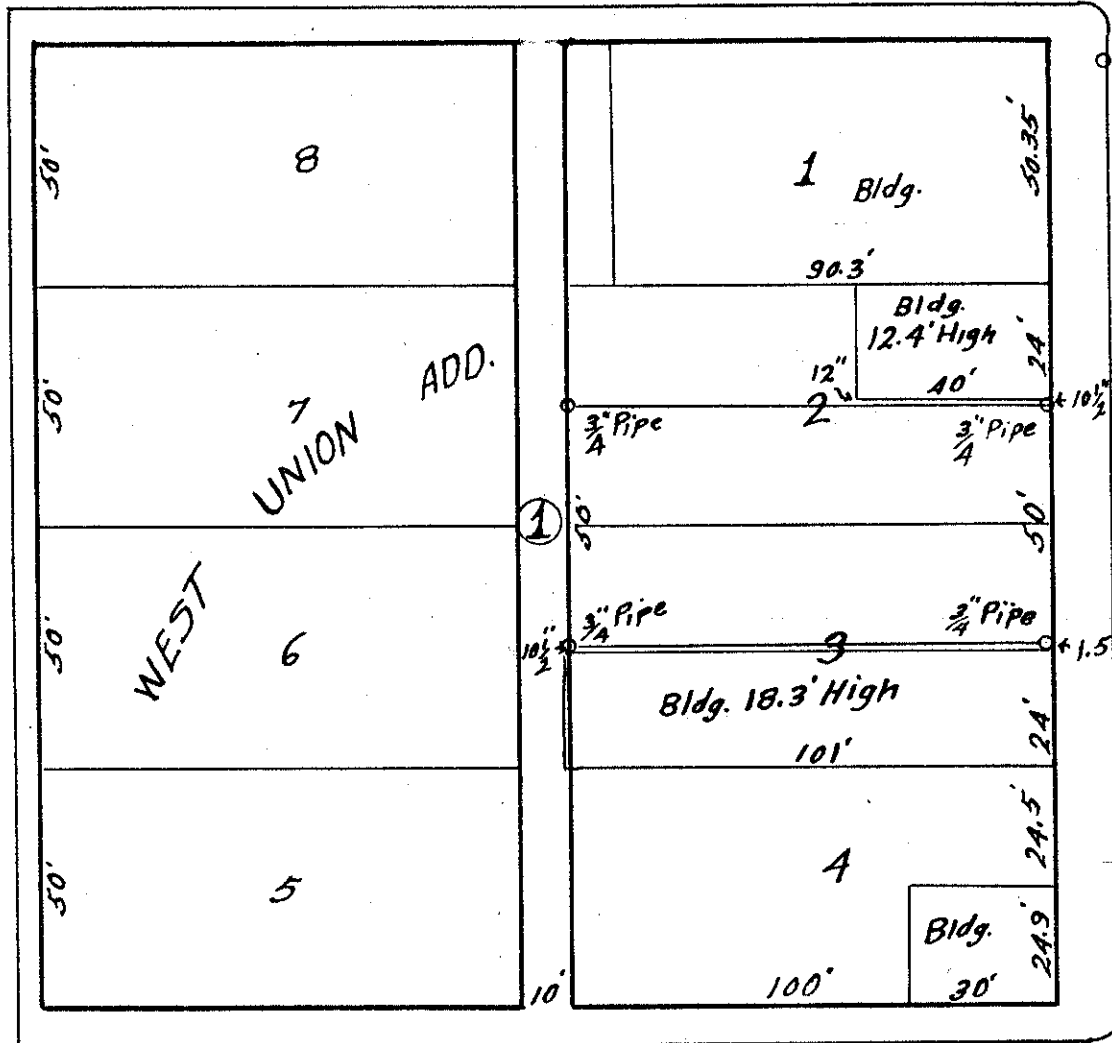


Rail Road

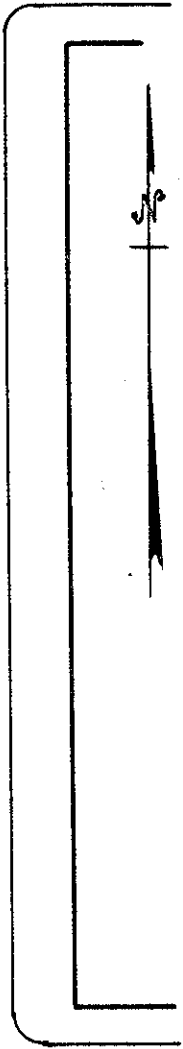
60'

ARCH ST.

60'



Fire Hydrant



FIRST ST.

MAIN ST.

BEAKMAN St.

80'

60'



Plot showing South 1/2 of Lot 2 & North 1/2 of Lot 3  
 in Block 1 West Union Addition in City of Union  
 Union County, Oregon. also the location of the  
 Buildings.  
 Scale 1 in. = 40 ft.  
 May 5, 1952

<b>UNION COUNTY SURVEYOR</b>	
Date Received	_____
Date Filed	3-4-86
By	_____
File No.	* 179