

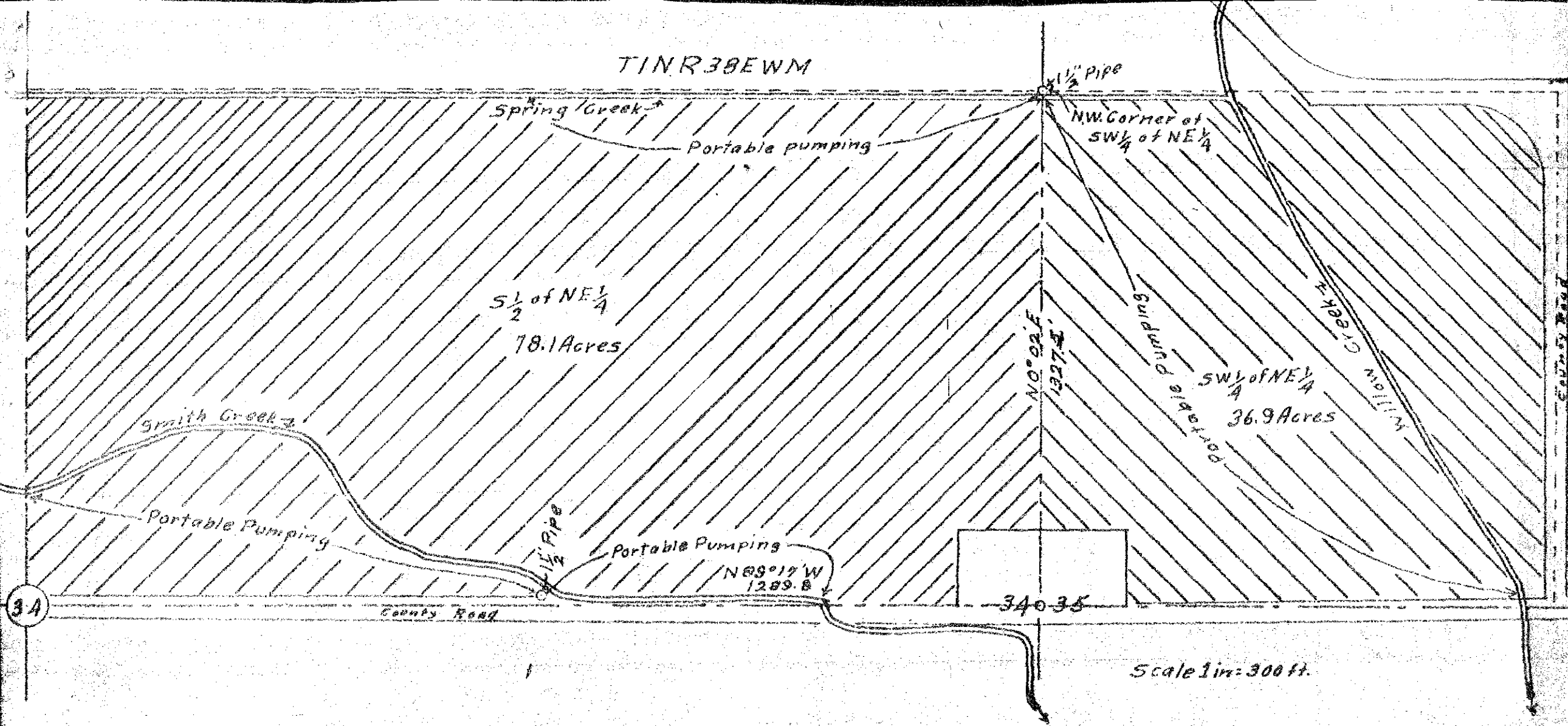
34

34-35

Scale 1 in = 300 ft.

I, S. B. Morgan of La Grande, Oregon do hereby certify that this map was made from notes taken during an actual survey made by me on September 11, 1949 that the monuments shown on this map consisting of two 1/2" Pipes 36" long are N 89° 17' W 1289.8 ft + N 00° 2' E 1322.5 ft. from the 1/4 Section corner common to Sections 34 & 35 T1N R38E WM.

S. B. Morgan



34

Scale 1 in = 300 ft.

I, S. B. Morgan of La Grande, Oregon do hereby certify that this map was made from notes taken during an actual survey made by me on September 11, 1949 that the monuments shown on this map consisting of two 1 1/2" Pipes 36" long are N 09° 17' W. 1289.8 ft + N 00° 02' E 1322.5 ft. from the 1/4 Section corner common to Sections 34 & 35 T1N R38 E W M.

S. B. Morgan

T1N R38E W4

UNION COUNTY SURVEYOR

Date Received _____

Date Filed 3-4-86

By _____

File No. NARRATIVE 1/5

SEE SURVEY 169

Spring Creek

Portable pumping

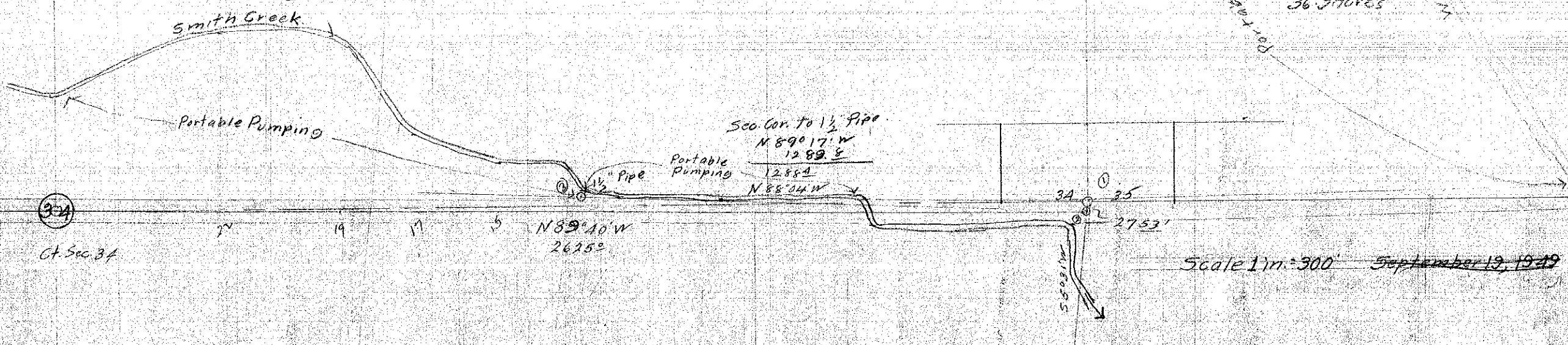
80 A
Less Road
Less water 1.0

5 1/2 of NE 1/4
78.1 Acres

1 1/2" Pipe
NW Cor. of SW 1/4 NE 1/4

40 A
Less Road 2.11
Less water 1.0

SW 1/4 of NE 1/4
36.9 Acres



34
Ct. Sec. 34

September 12, 1949

I, J. B. Morgan, of La Grande, Oregon do hereby certify that this map was made from notes taken during an actual survey made by me on September 11, 1949; that the monuments shown on this map consisting of two 1 1/2" Pipes 36" long are N 89° 17' W 1289.8 ft & N 0° 02' E 1327.5 ft from the 1/4 Section corner common to Sections 34 & 35 T1N R38E W4.

J. B. Morgan