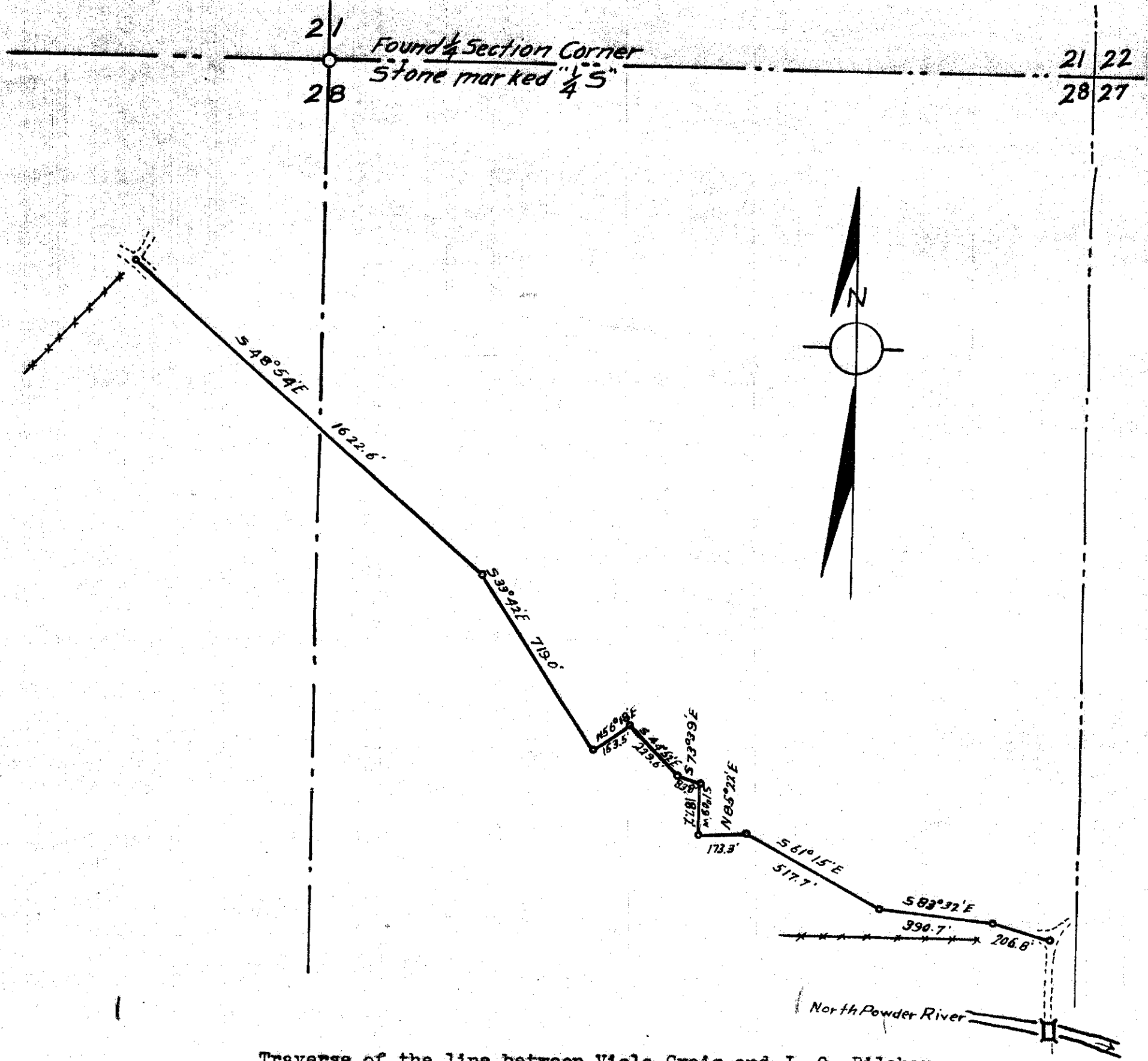


T6S R 38E.W.M.



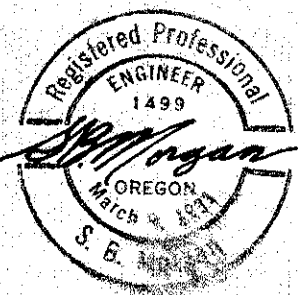
Traverse of the line between Viola Craig and J. O. Pilcher property, of James A. Pilcher's Estate.

Beginning 701.7 feet south and 652.2 feet west of the 1/4 corner common to sections 21 and 28 T.6S.R.38E.W.M., thence S48°54'E 1622.6 feet, thence S33°42'E 719.0 feet, thence N56°18'E 153.5 feet, thence S44°52'E 229.6 feet, thence S73°39'E 83.8 feet, thence S1°09'W 187.2 feet, thence N85°22'E 173.3 feet, thence S61°15'E 517.7 feet, thence S83°32'E 390.7 feet, thence S75°09'E 206.8 feet, Said point being 2986.9 feet south and 2550.7 feet east of the 1/4 section corner, common to sections 21 and 28 T.6S.R.38E.W.M.

I, S. B. Morgan, Civil Engineer, do hereby certify that the survey described above was made by me on the 25th day of September, 1938.

Scale 1"=400'
Dated September 25, 1938

S. B. Morgan
Civil Engineer
La Grande, Oregon.



UNION COUNTY SURVEYOR	
Date Received	_____
Date Filed	3-4-86
By	_____
File No.	# 167