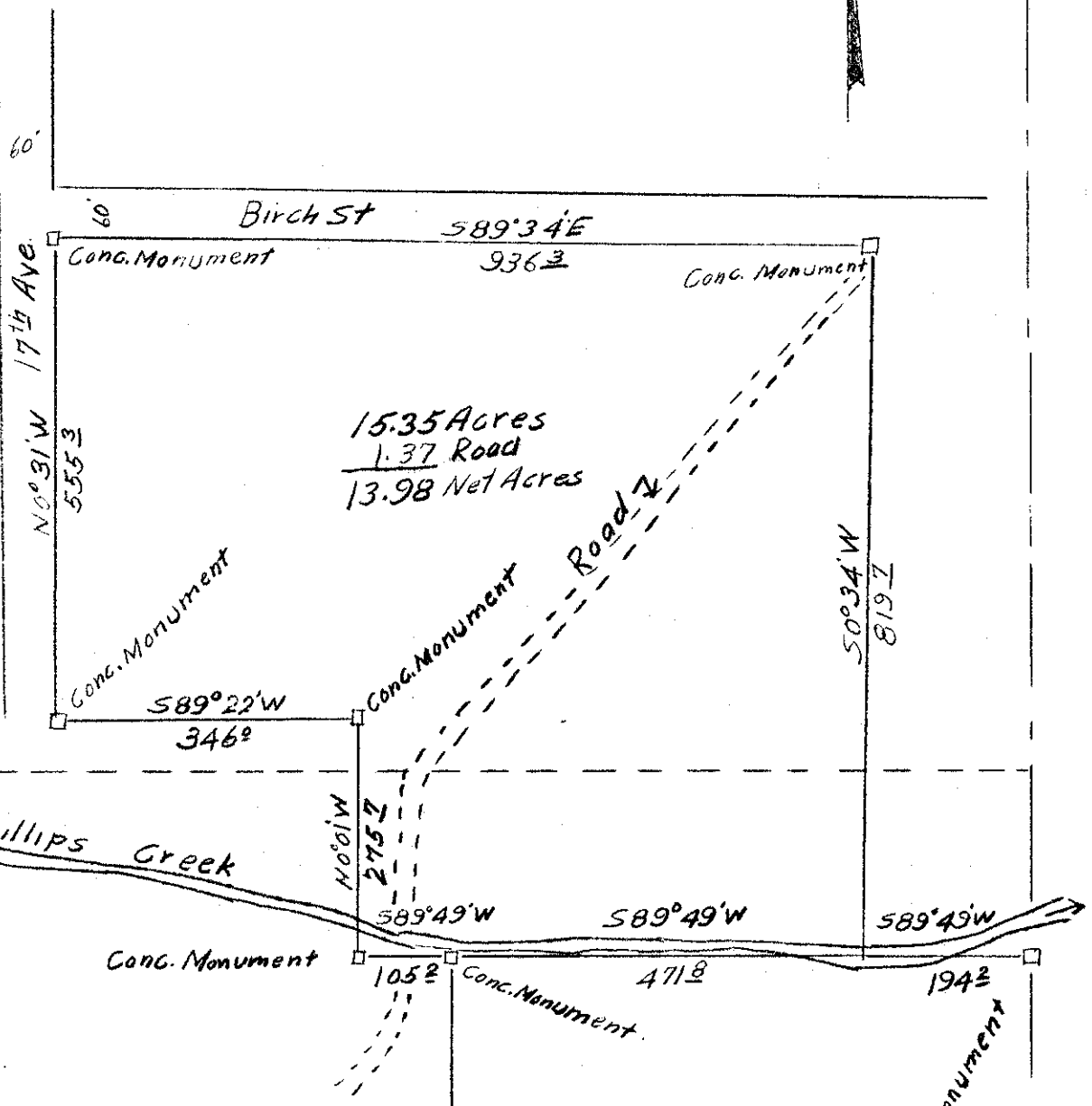


15

T 1 N R 39 E W M

NE 1/4 of SW 1/4



15.35 Acres
1.37 Road
13.98 Net Acres

**UNION COUNTY
SURVEYOR**

Date Received _____

Date Filed 3-3-86

By G. LANGLITZ, DEPUTY

File No. 158

SEE NARRATIVE DRAWER 1/4
SEE SURVEY 159

SURVEY OF
PONDOSA PINE LUMBER Co. PROPERTY
ELGIN, OREGON
Scale 1 in = 200 ft
April 29, 1951.

Cong. Monument

666.2'

15 Stone

22