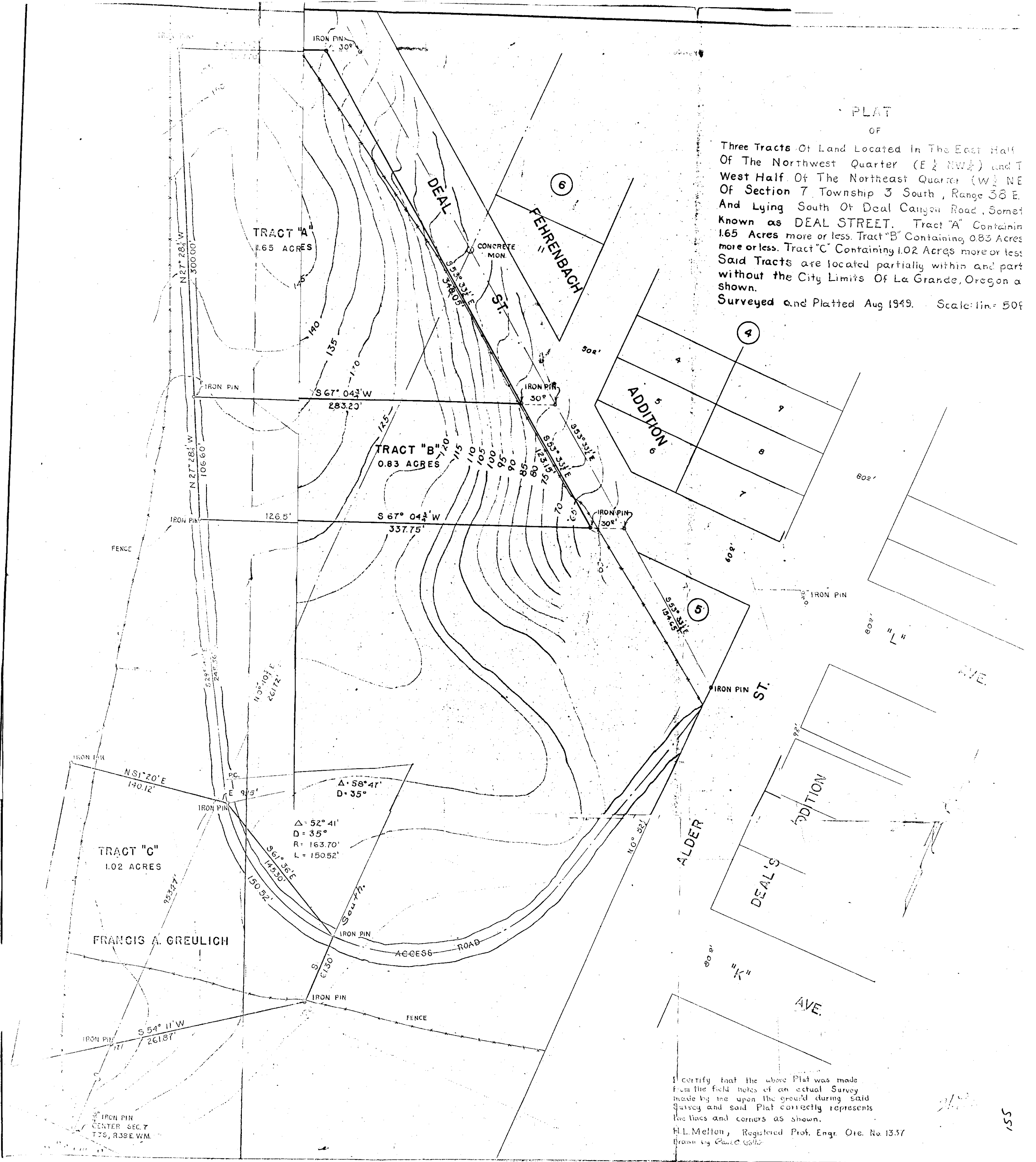


PLAT
OF

Three Tracts Of Land Located In The East Half Of The Northwest Quarter (E 1/2 NW 1/4) and The West Half Of The Northeast Quarter (W 1/2 NE 1/4) Of Section 7 Township 3 South, Range 38 E. And Lying South Of Deal Canyon Road, Somewhat Known as DEAL STREET. Tract "A" Contains 1.65 Acres more or less. Tract "B" Contains 0.83 Acres more or less. Tract "C" Contains 1.02 Acres more or less. Said Tracts are located partially within and part without the City Limits Of La Grande, Oregon as shown. Surveyed and Platted Aug 1949. Scale: 1" = 50'



I certify that the above Plat was made from the field notes of an actual Survey made by me upon the ground during said Survey and said Plat correctly represents the lines and corners as shown.
H.L. Melton, Registered Prof. Engr. Ore. No. 1337
Drawn by Paul Galt