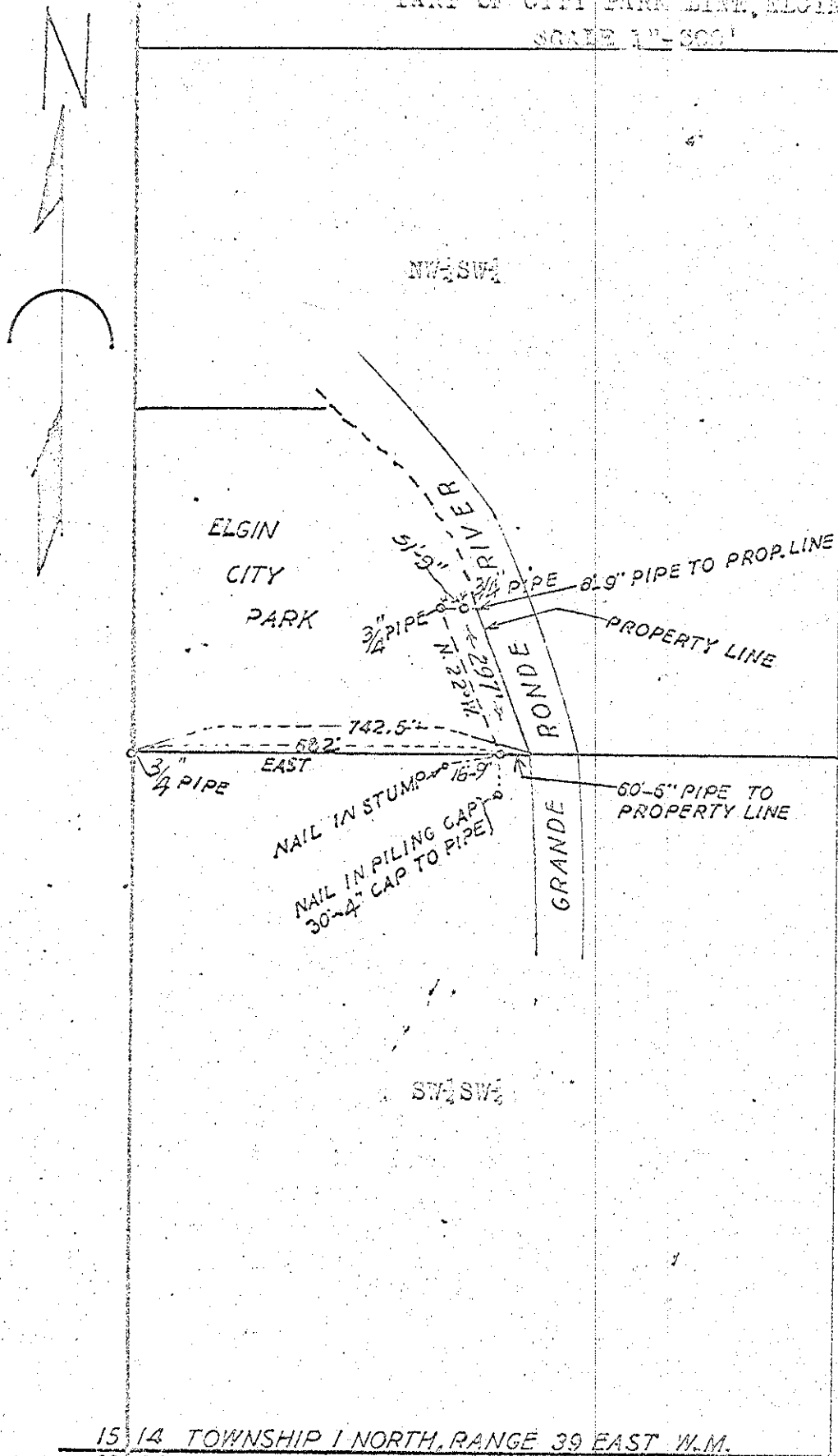


OF

PART OF CITY PARK LINE, ELGIN, OREGON.
SCALE 1"=500'



I, A. H. Melain, of La Grande, Oregon, hereby certify that on February 16, 1953, I made a survey of the southeast corner of the NW 1/4 SW 1/4 Section 14, Township 1 North, Range 39 East, 3rd 1/4; thence East 682 feet and drove a 1" x 36" pipe for a witness corner; thence North 22 West 297 feet along a line parallel to the property line and drove a 3/4" x 36" pipe; thence East 511.2" and drove a 3/4" x 60" pipe witness corner which is 6' 29" from the property corner.

A. H. Melain

15 14 TOWNSHIP 1 NORTH, RANGE 39 EAST W.M.
23 23