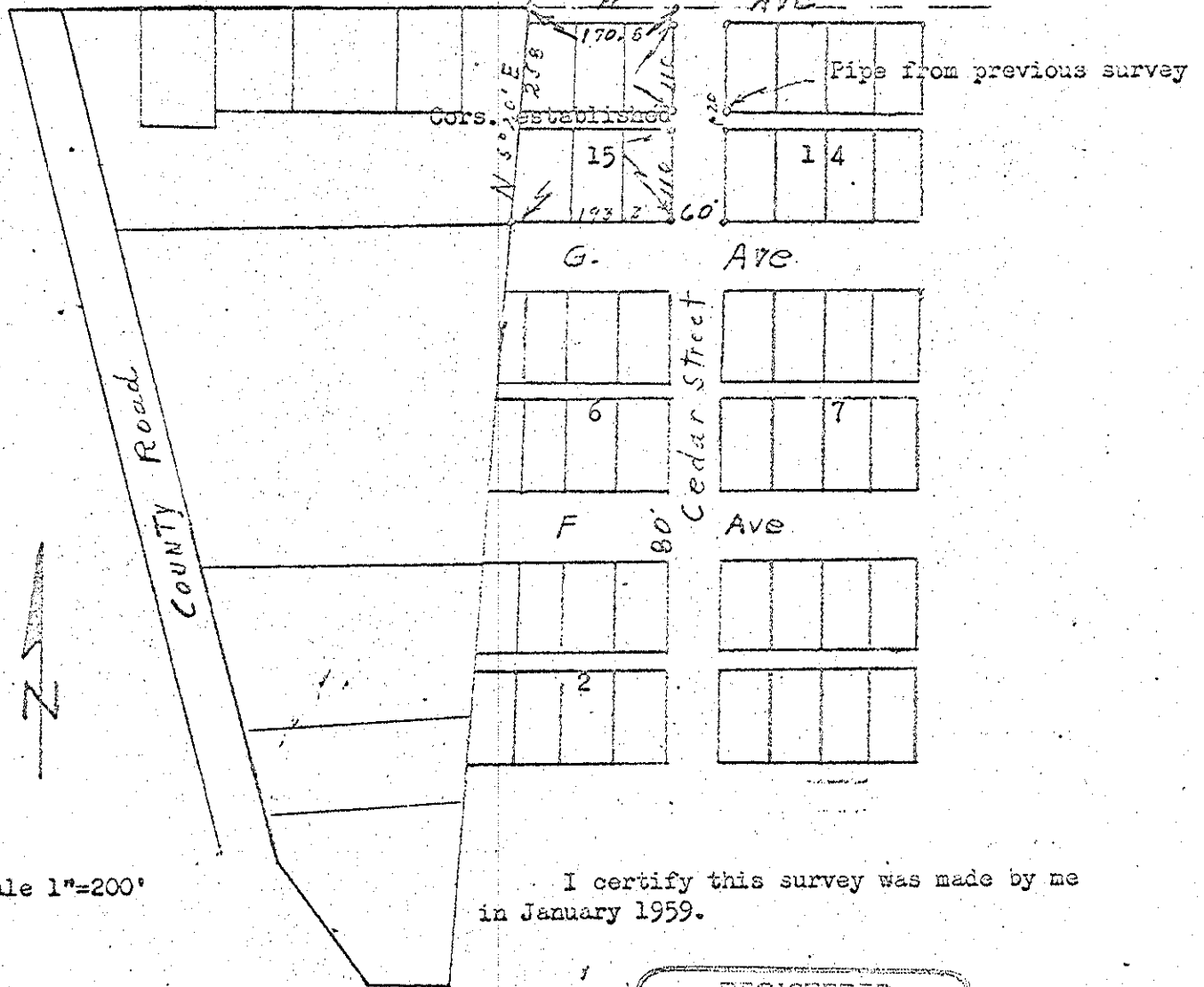


117

111

Survey of Block 15 of Arnold & Dray's Addition
to La Grande, Oregon. Being in NW1/4 SE1/4 Sec. 7
T3S, R38EWA.

Pipe from previous survey
established at 1432.83 ft. to
1/4 cor. between sections 7 and 8
T3S, R38EWA.



scale 1"=200'

I certify this survey was made by me
in January 1959.

REGISTERED
OREGON
LAND SURVEYOR

James G. Voelz

MAY 4, 1959
JAMES G. VOELZ
381