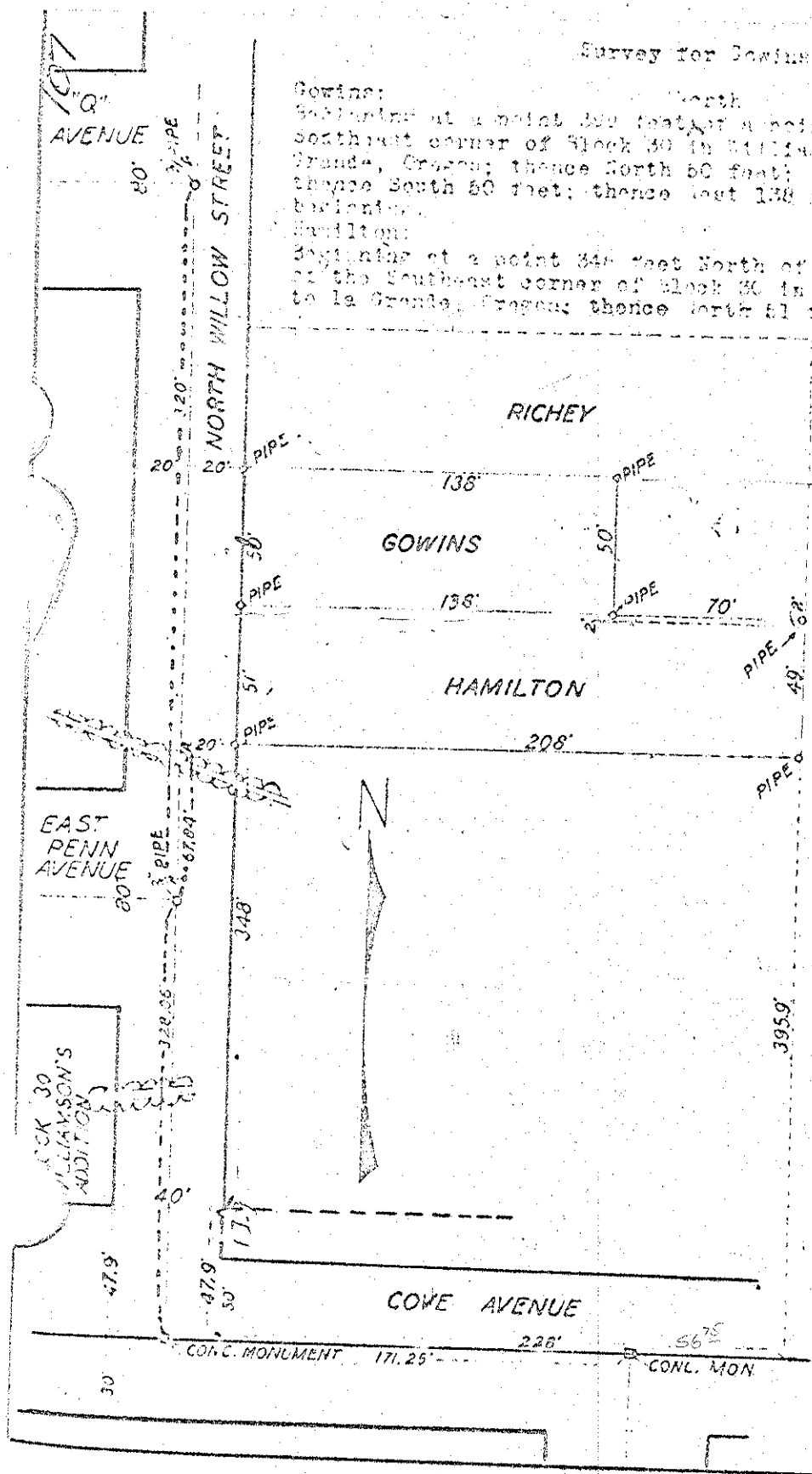


Survey for Gowins & Hamilton

107



Gowins:
Beginning at a point 348 feet North of a point 40 feet East of the southeast corner of Block 30 in Williamson's Addition to la Grande, Oregon; thence North 60 feet; thence East 138 feet; thence South 60 feet; thence West 138 feet to point of beginning.

Hamilton:
Beginning at a point 348 feet North of a point 40 feet East of the Southeast corner of Block 30 in Williamson's Addition to la Grande, Oregon; thence North 61 feet; thence East 134 feet; thence South 2 feet; thence East 70 feet; thence South 49 feet; thence West 20 feet to point of beginning.

by A. H. McLean
June 1916.

The tracks and width of streets are to be made of 12" pipes.

395.9
11.3

384.6
13.3

11.3

