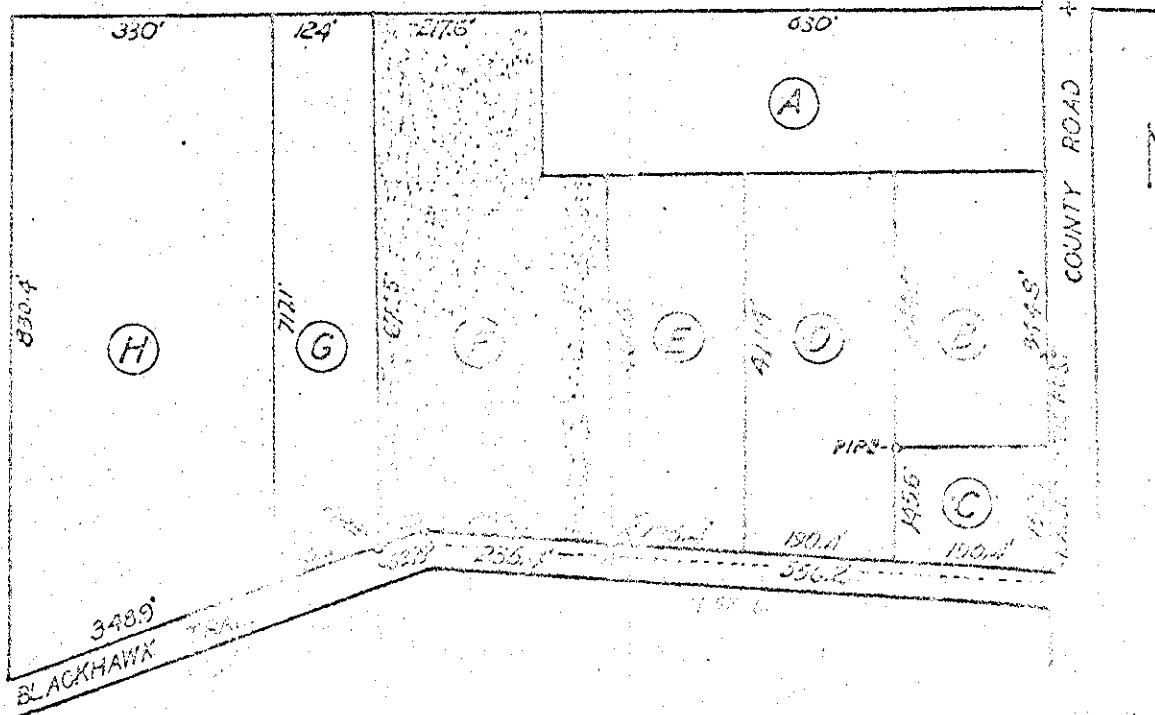
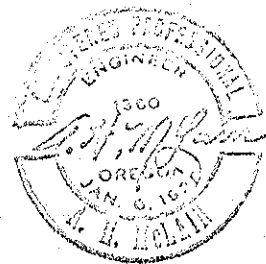


SURVEY  
 OF  
 TRACT "F", PROEBSTEL TRACTS  
 IN  
 NE 1/4 SW 1/4 SECTION 32, T. 2 S., R. 38 E., M.M.

92



DRAWN AUGUST 1, 1960.  
 SCALE 1" = 200'  
 FOR JAMES C. DAVIS



92

92-86