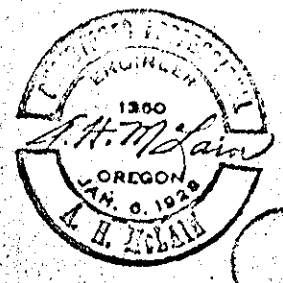


GOVERN AVENUE

ROCK MONUMENT 432

79

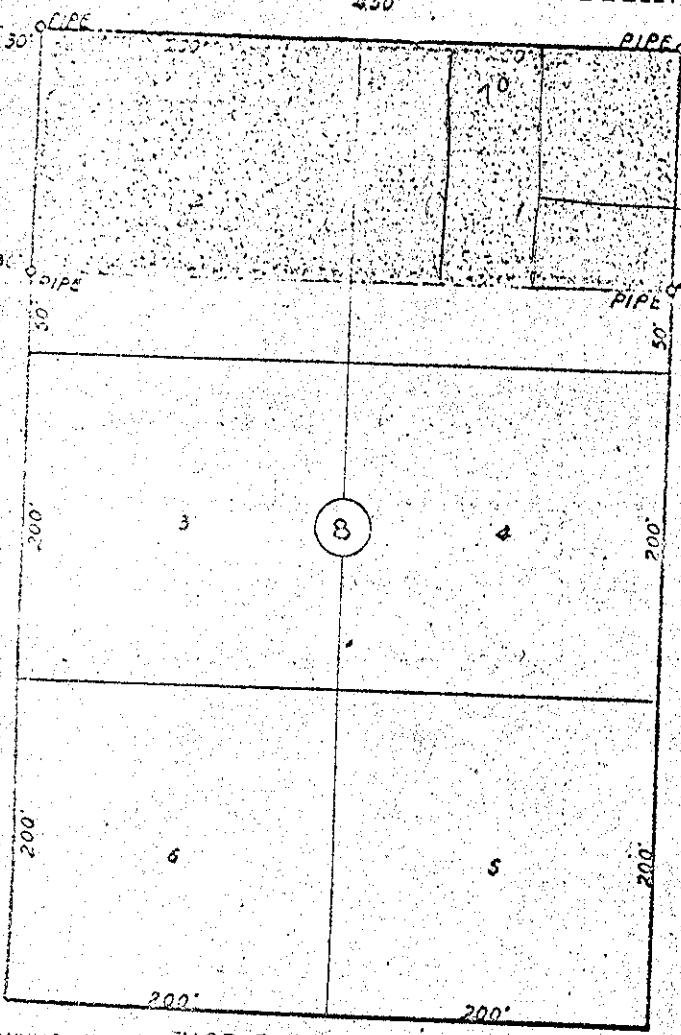
6L



EAST "N" AVENUE 450'

NORTH HILLOW STREET 480'

NORTH HALL STREET



SURVEY
CP
NORTH 150' LOT 1-2, BLOCK 8
HONAN'S ADDITION
TO
LA GRANDE, OREGON.
6-10-50

SCALE 1"=100'

MONUMENT EAST "M" AVENUE