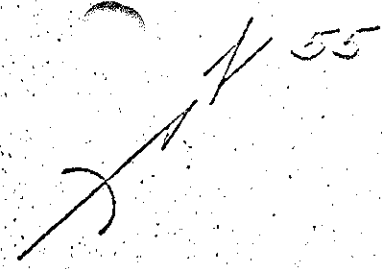
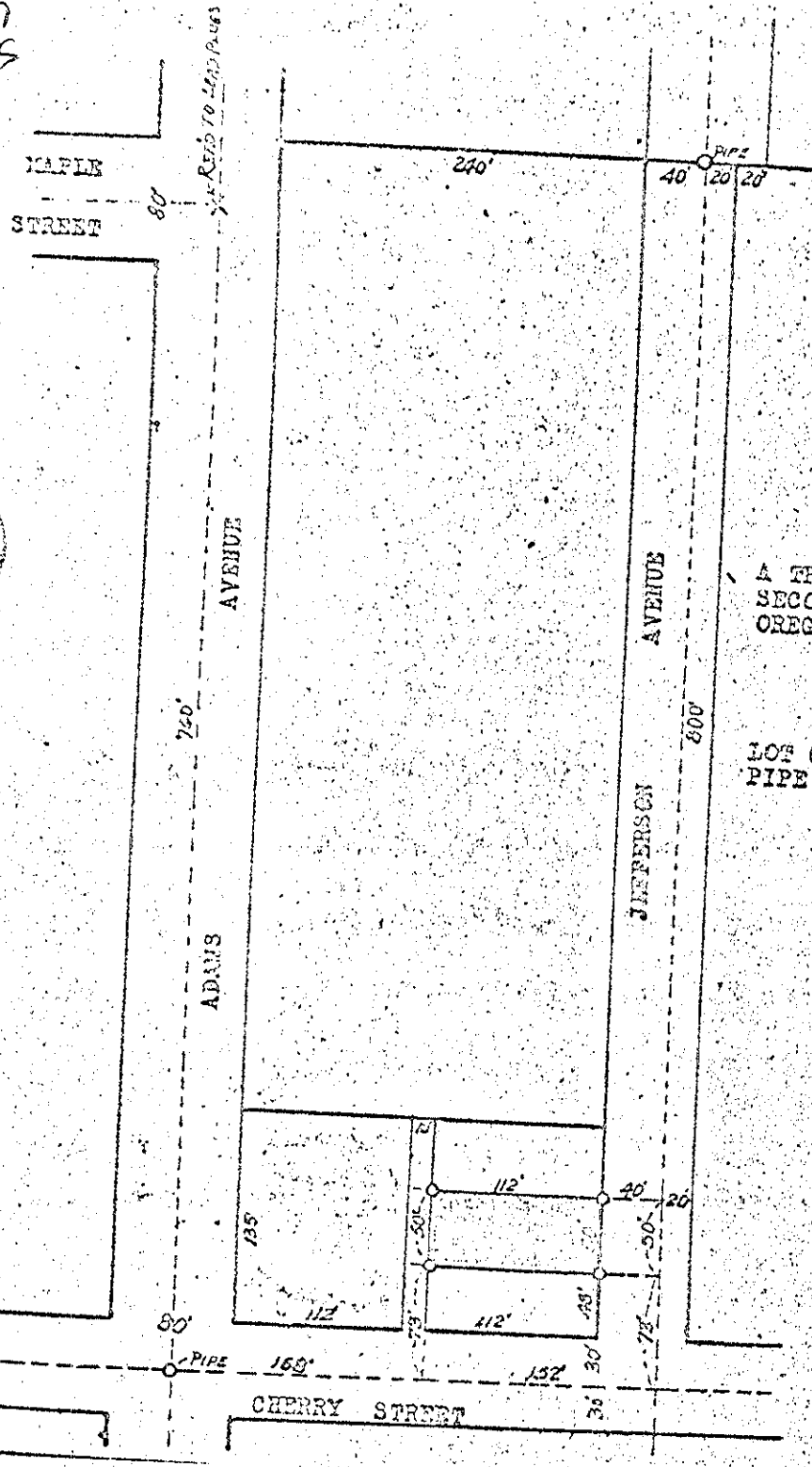


555

59

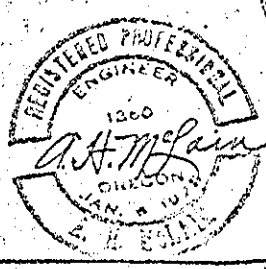
55



SCALE 1" = 100'

SURVEY  
 OF  
 TRACT "N"  
 A TRACT 50' x 112' IN COGGAN'S  
 SECOND ADDITION TO LA GRANDE,  
 OREGON, FOR D. W. ELDRIDGE  
 JUNE, 1949.

LOT CORNERS MARKED WITH PIPE



168  
 152  
 320