

48

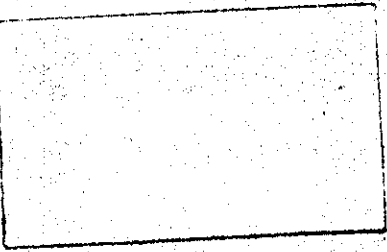
48

FOURTH STREET

320'

CROSS ON MANHOLE COVER

CROSS ON MANHOLE COVER



FIFTH STREET

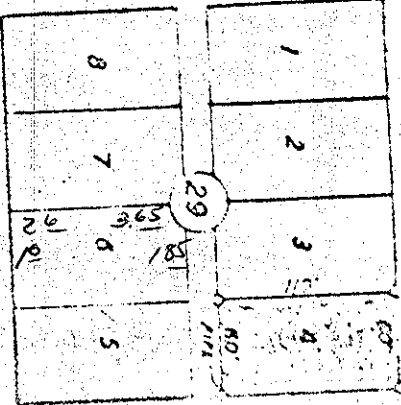
540'

540'

SCALE 1"=100'

FOR V.L. FOYLEN
8-8-54

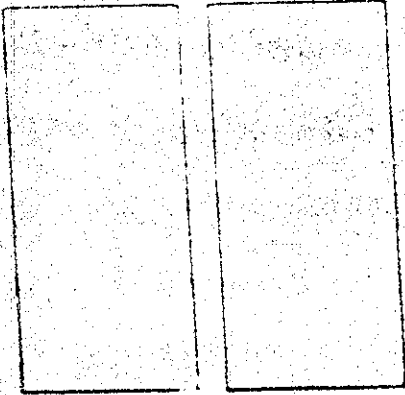
SURVEY
OF
LOT 4, BLOCK 29, CHAPLIN'S ADDITION
LA GRANDE, OREGON.



SIXTH STREET

G - AVENUE

H - AVENUE



SEVENTH STREET

FROM
WALK
JNT.



48

48