

46
28

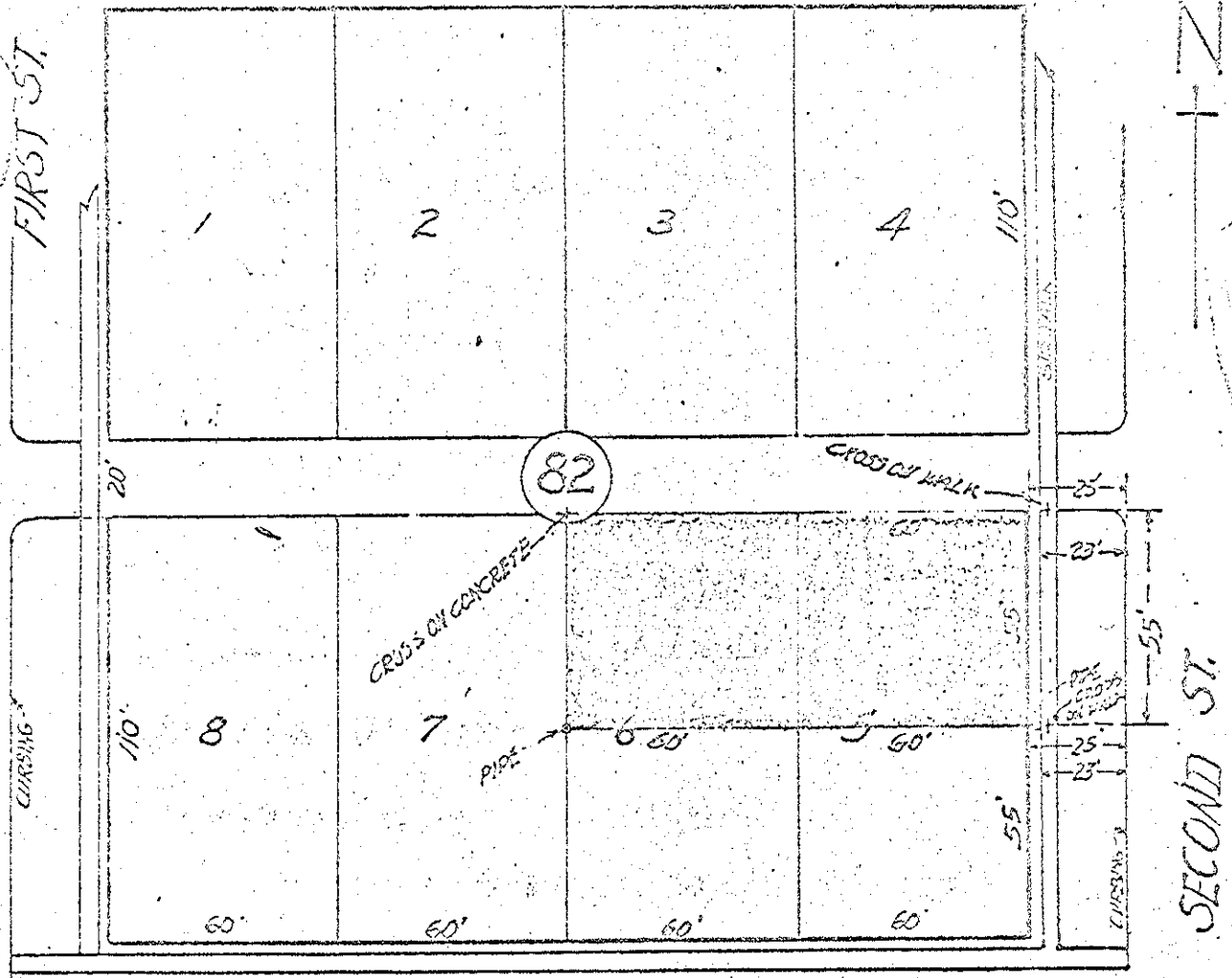
SURVEYED 97

46

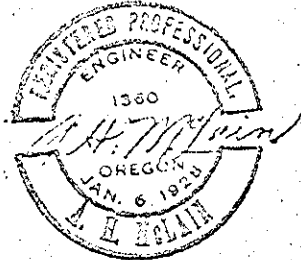
FOR

ARCHER A. AMTLES

"L" AVE.



"X" AVE.



SURVEYED APRIL 11, 1953.

NORTH ONE HALF OF LOTS 5-6, BLOCK 82,
CHAPLIN'S ADDITION TO LA GRANDE, OREGON.

SCALE 1"=40'