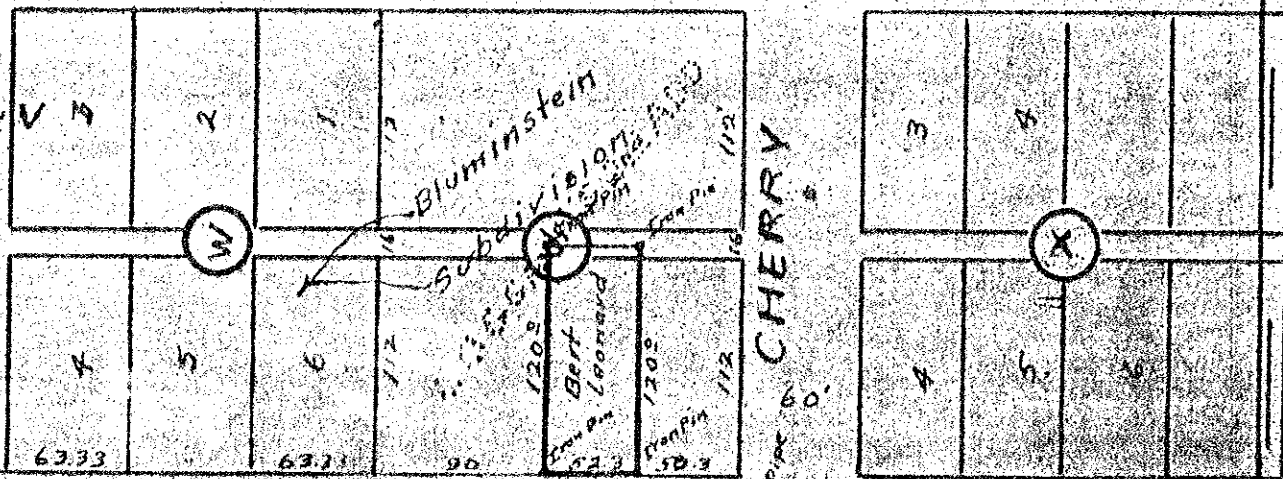


# ADAMS

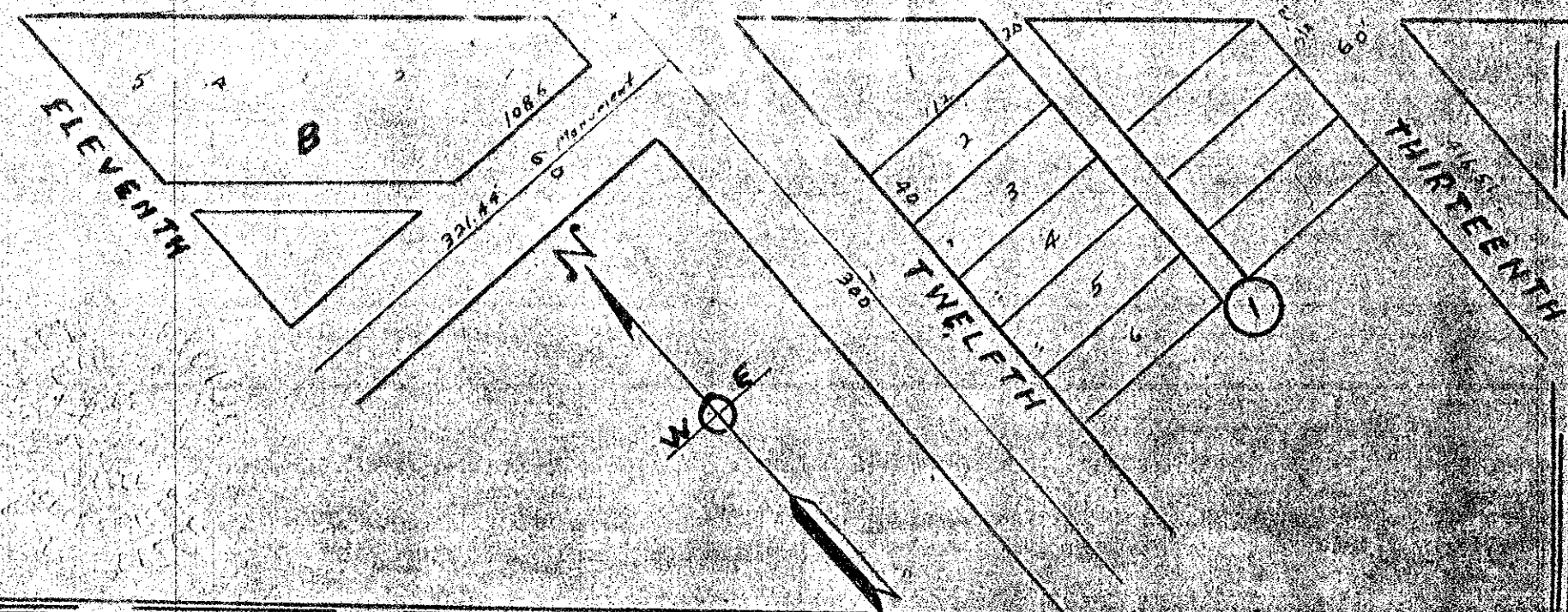
# AVE

## MAP

of  
 Tract of Ground located East  
 of  
 Bluminsstein's Addition BK V N  
 Coqqan's 2<sup>nd</sup> Addition to  
 The City of La Grande, Ore  
 Surveyed June 19, 1957  
 By H. L. Melton  
 Reg. Prof. Engr Ore  
 No. 1337  
 Scale 1" = 100 ft.



Screen is lead plug  
 390.15  
 152.87  
 59.98  
 898.4



# 40  
 RR 29