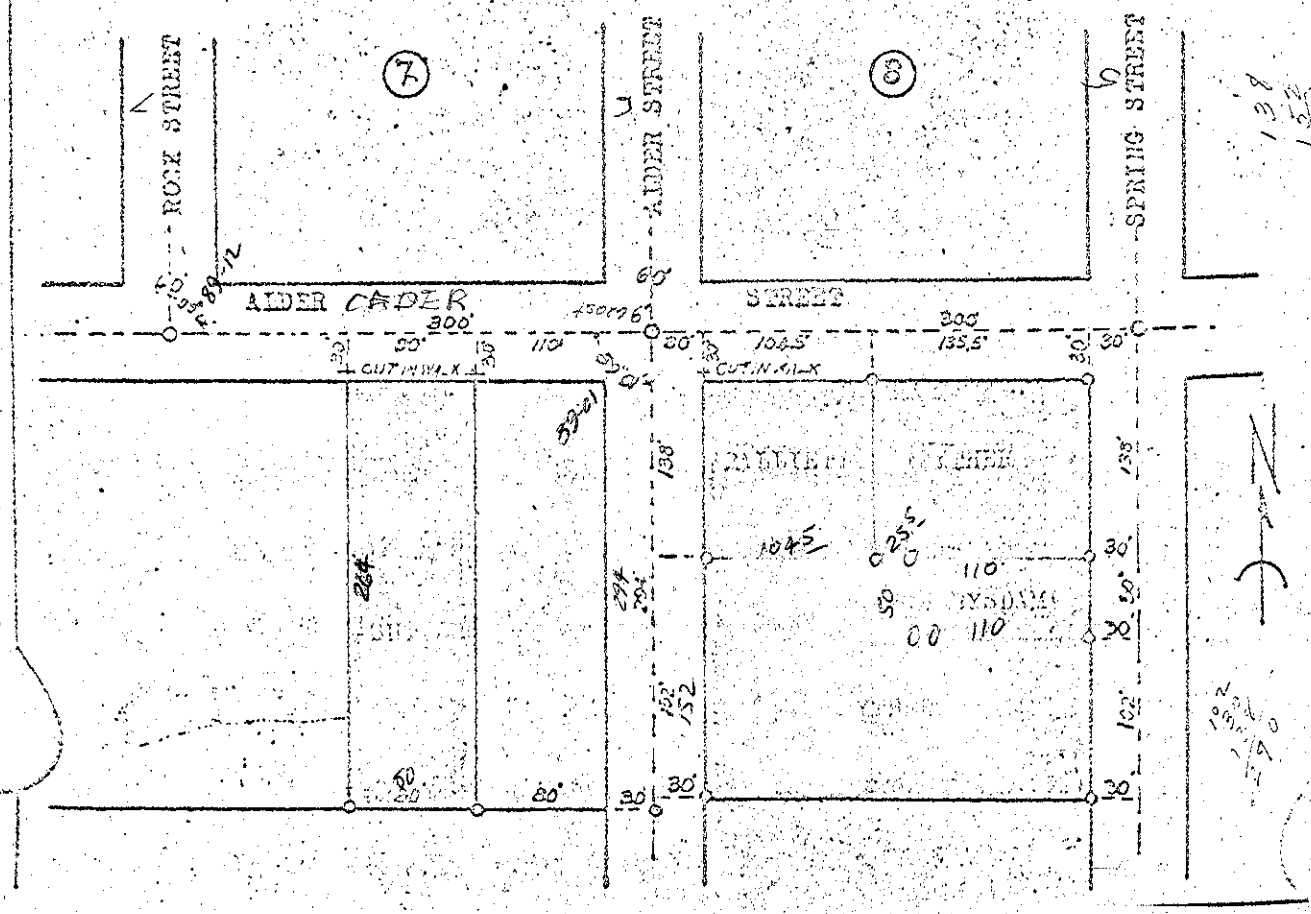


TRACTS SOUTH OF BLOCKS 7 & 8,  
STEVENSON'S ADDITION TO ELGIN, OREGON.

JUNE 1949.

TRACT CORNERS MARKED WITH PIPE THUS ○  
SIDEWALKS BUILT TO PROPERTY LINE.

SCALE 1"=100'



138  
137  
137

102  
101  
101