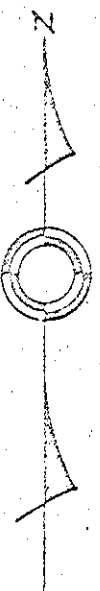
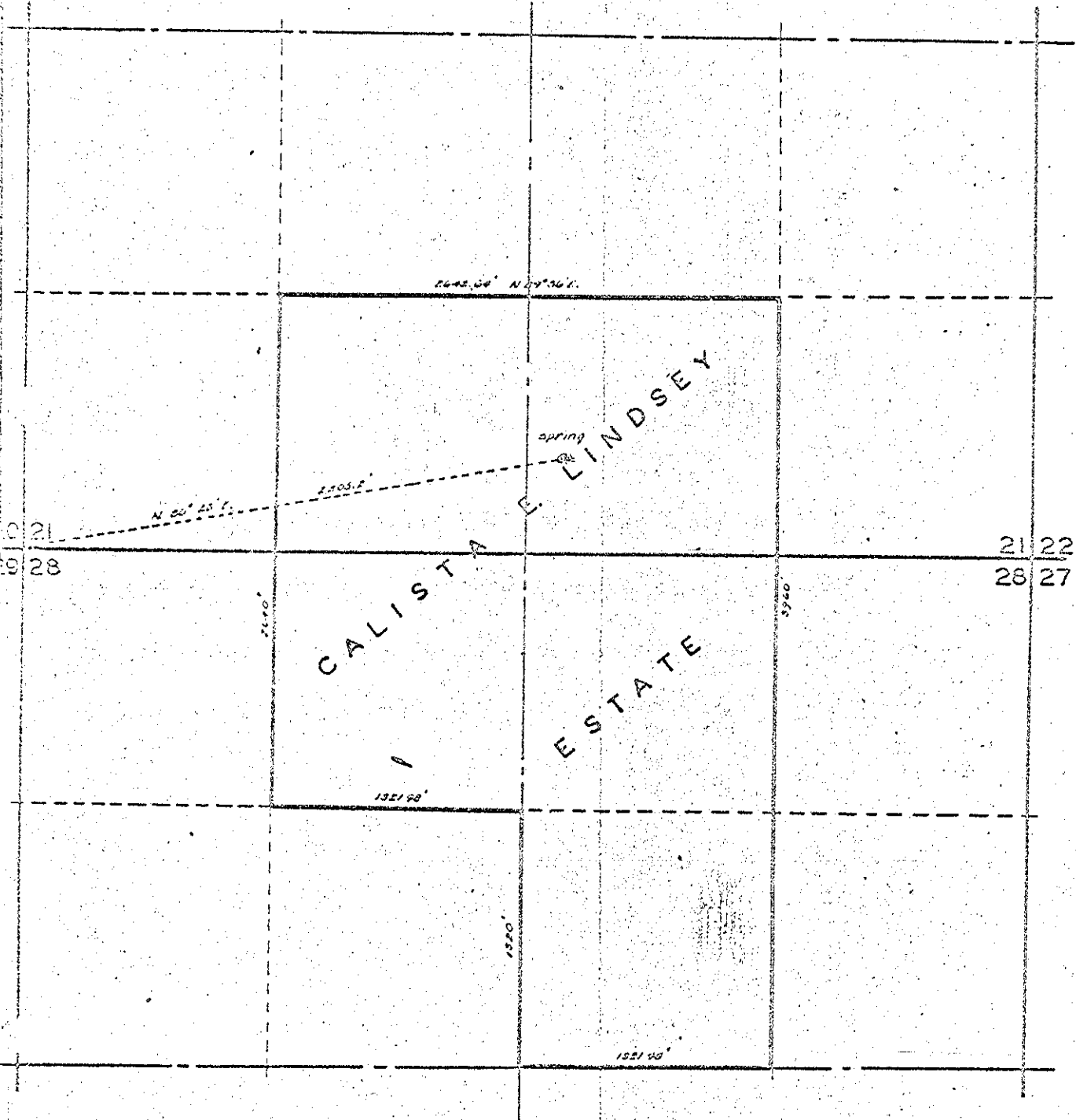


12

& N. 1/2, S. 28, TWP. 3 S. R. 37 E., W.M. UNION
COUNTY, OREGON

12



REGISTERED
OREGON
LAND SURVEYOR
Ronald J. Brazier
MAY 4, 1950
RONALD J. BRAZIER
374

Scale: 1" = 1 Mile.

Var. 20° 05' E

Oct - '55

20