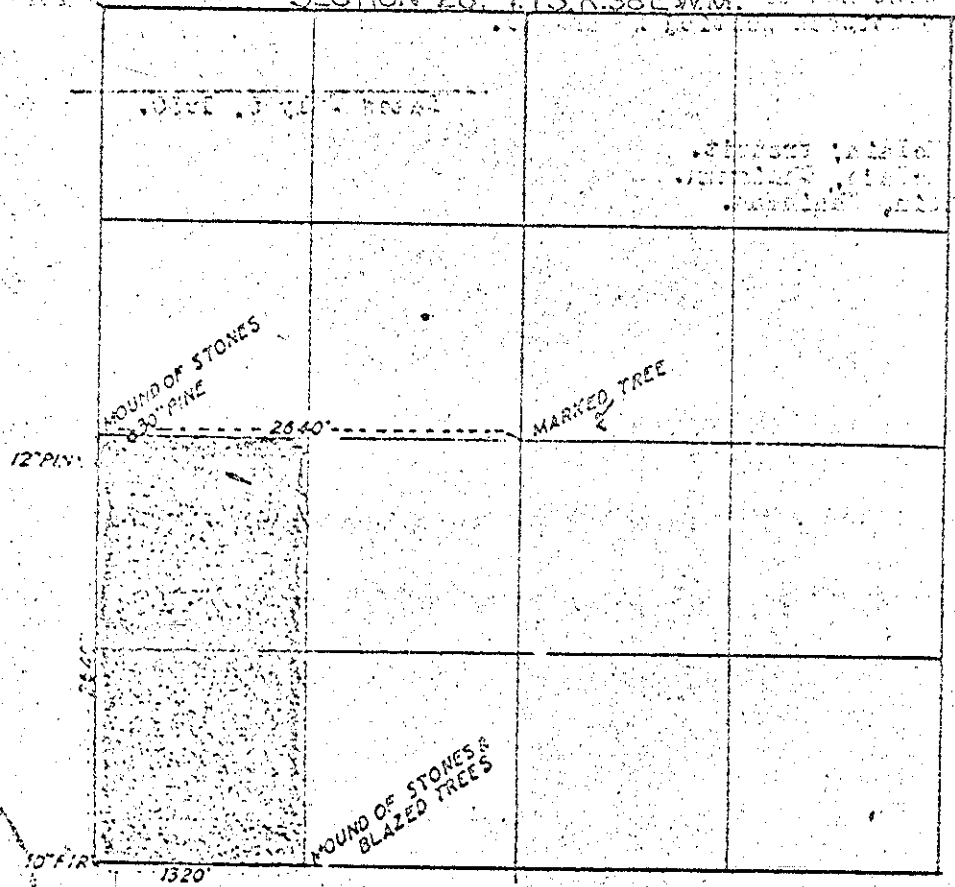


8 OF  
 W 1/2 SW 1/4 SECTION 28 T. 1 S. R. 38 E. W. M.

SECTION 28 T. 1 S. R. 38 E. W. M.



SCALE 1"=100'

SURVEY MADE 7-4-50 FOR WM. DOBBIN.

(SEE OVER)

The accepted corner at center of Section 28, Township 1 South, Range 38 East of the Willamette Meridian, is a marked tree with a fence running east and north from it. Ran West from above corner on a magnetic variation of 20 degrees East, a distance of 2640 feet and set stake for temporary  $\frac{1}{4}$  corner to sections 28 and 29.

The accepted corner at SW corner of SW  $\frac{1}{4}$  SW  $\frac{1}{4}$  section 28, T. 1 S., R. 38 E. is a mound of rock with blazed trees. Ran West from this corner on a magnetic variation of 19 degrees East a distance of 1320 feet and blazed a 10" fir for corner to sections 28-29-32-33. Ran North from above corner on a magnetic variation of 20 degrees East and at distance of 2640 feet intersect East and West line of section 28 a distance of 100 feet west of temporary  $\frac{1}{4}$  corner. Made a mound of stones at temporary  $\frac{1}{4}$  cor for the  $\frac{1}{4}$  corner to section 28-29 and blazed a 30" pine 12 feet east and a 12" dead pine 13 feet South. Ran South from the  $\frac{1}{4}$  corner on a magnetic variation of 18 degrees East a distance of approximately 1500 feet and blazed a line for the line between sections 28 and 29.

*G. H. McLain*  
 Date July 8, 1950.

D. R. McLain, Transit.  
 A. E. McLain, Chainman.  
 Wm Dobbin, Chainman.