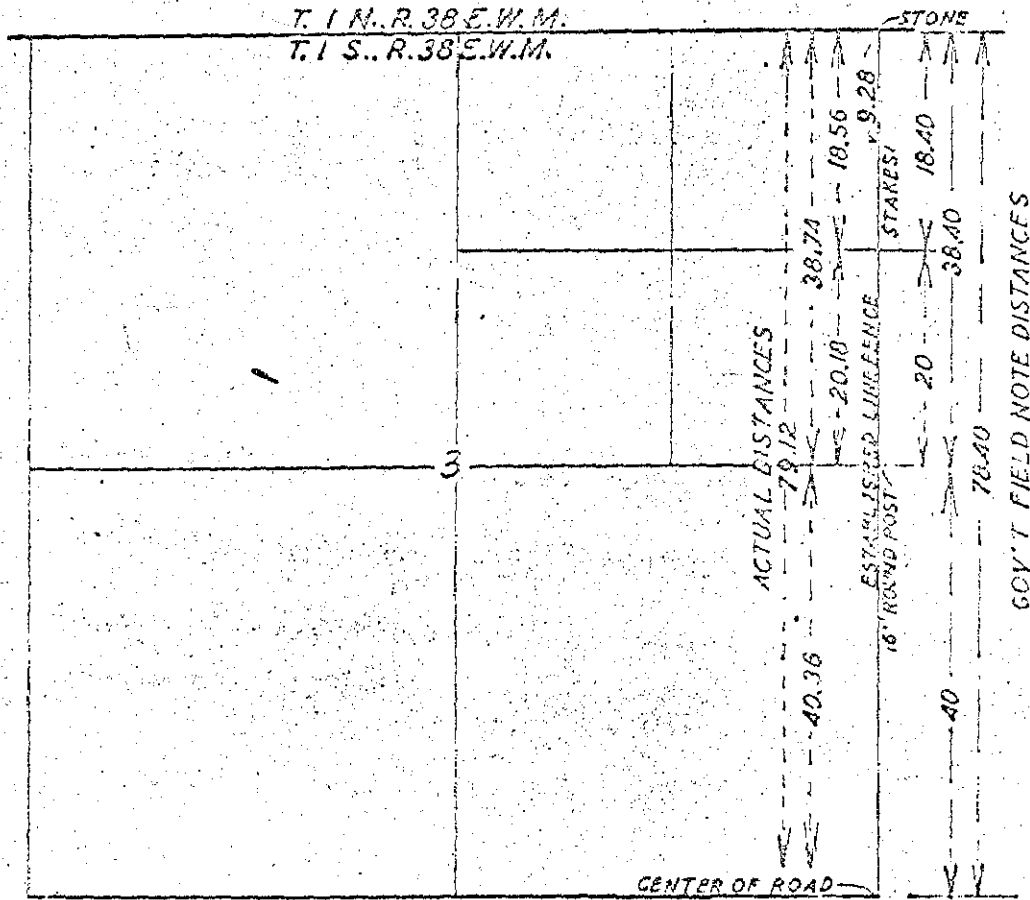


SURVEY  
 OF  
 EAST LINE SECTION 5, TOWNSHIP 1 SOUTH, RANGE 38 E.W.M.  
 FOR  
 MIKE ROYES & ANNA PARKS  
 July 16, 1953.

N. B. ALL DISTANCES AS SHOWN ARE CHAINS OF 66 FEET.



SCALE 1" = 1000'

Survey made to establish the one sixteenth corner on East side of NE<sub>1</sub> of Section 5, Township 1 South, Range 38 East, W. M.

By *A. H. Holman*



235  
 T. 1  
 S. R. 38  
 E. W. M.