

1915

Township 3 S. Range 38 E. W. M. Union County, Oregon.

CHAINS  
LKS.

Survey made for James Guinland and Julia B. Holmes, March 11<sup>th</sup> - 25<sup>th</sup> 1915.

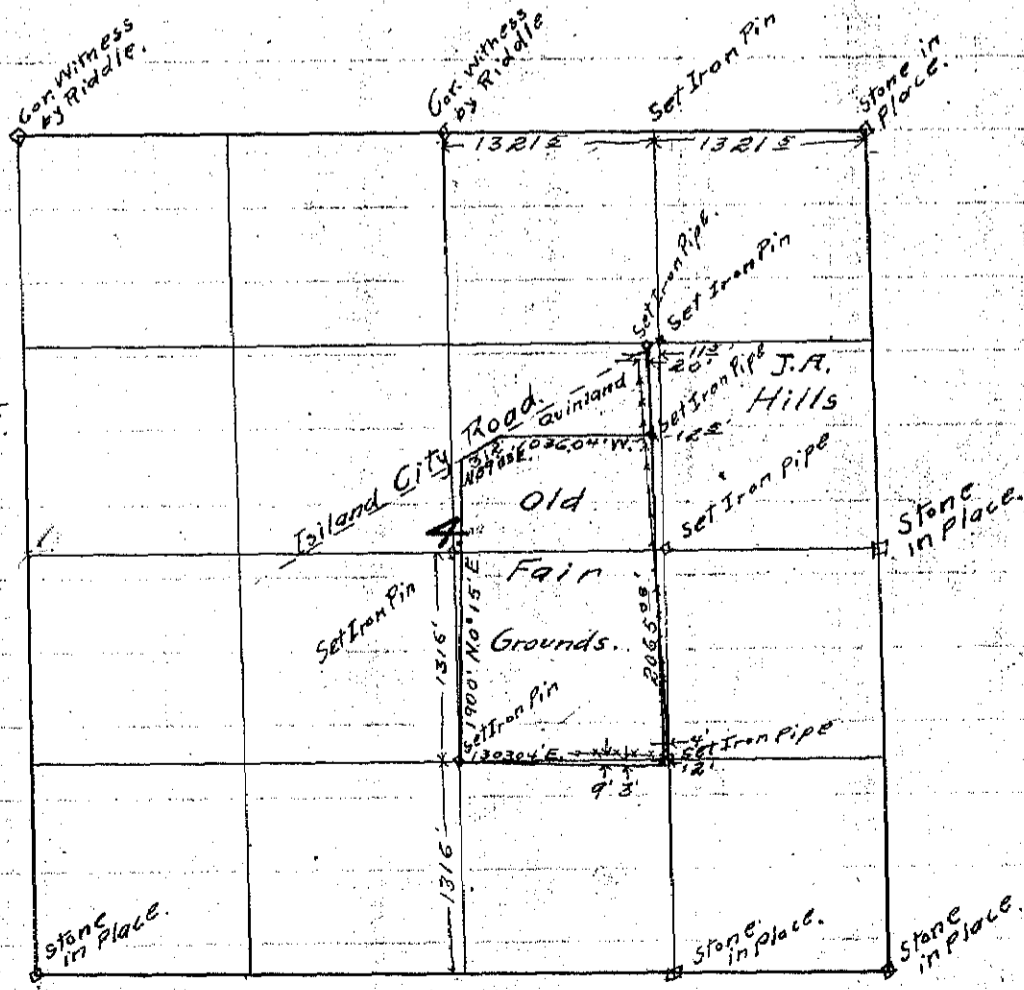
The object of the survey was to establish the East line of property in S.W. 1/4 N.E. 1/4 Sec 4, T3S. R38E belonging to Belle Guinland, described in the Deed as "that lot or parcel of land situated and laying North of the Grand Bonds Valley Angl. Society's land and South of LaFond and Island City County Road etc."

(also the East line of property in said section belonging to Julia B. Holmes, shown on the plat of four corners)

I first located the four corners of Section 4, T3S. R38E, then ran from N.W. Cor. E. to the N.E. Cor., then back 1321 1/2 feet establishing the center of the North line of the N.E. 1/4 of said sec. 4. Then ran from the S.W. Cor. E. to the S.E. Cor. then back 1324 1/2 feet, checking the stone in place at center of South line of S.E. 1/4 of said sec. 4. From the two points thus established I ran the center line of the E 1/2 of said sec. 4. setting the 1/4 mile corner thereon.

Then from the 1/4 corners of said section, (those not in place, being established in the manner above described) I ran

Variation of Middle 21 1/2° E.



the N+S and E+W center lines of said section, and at their intersection established the center of said section.

Township

Range

Union County, Oregon.

From the center of said Sec. 4, thus established, I ran south on the N+S Center line 1316 feet, being 1/2 the distance to the south line of said section 4, at which point I established the S.W. Cor. of the NW 1/4 of the SE 1/4 of said Section 4.

From this point, after determining the true N+S. line by means of an observation on Polaris, I ran N. 0° 15' E. 1900' thence N 59° 03' E 312', thence East, 1036.04' <sup>(SW Cor. NW 1/4 SE 1/4)</sup> also from the above mentioned point, I ran East 1303.04'. Iron pins or pipes 3' long and 1/2" in diam were set at each cor. established.

Chaimmen: - V. B. Papert and J. O. Shanks  
Those present at various times during survey were, A. P. Davis, J. A. Hills, James Simmland, Courtney, Huffman, Riddle, Mulholland and others

Description of corners

N.W. Cor Sec. 4,	Post	witnessed by Riddle
N 1/4 Cor	"	"
NE "	"	Stone under fence, across lane from Courtney house
SW "	"	in Co. Road
SE "	"	"
E 1/4 "	"	at fence corner, witness by Mulholland
S 1/8 Cor of SE 1/4 "	"	in Co. Road

Other corners used in survey were established as above described.

The Survey is correctly shown on the accompanying Plat.

Recorded March 29th 1915  
J. Mulholland,  
Co. Surveyor