

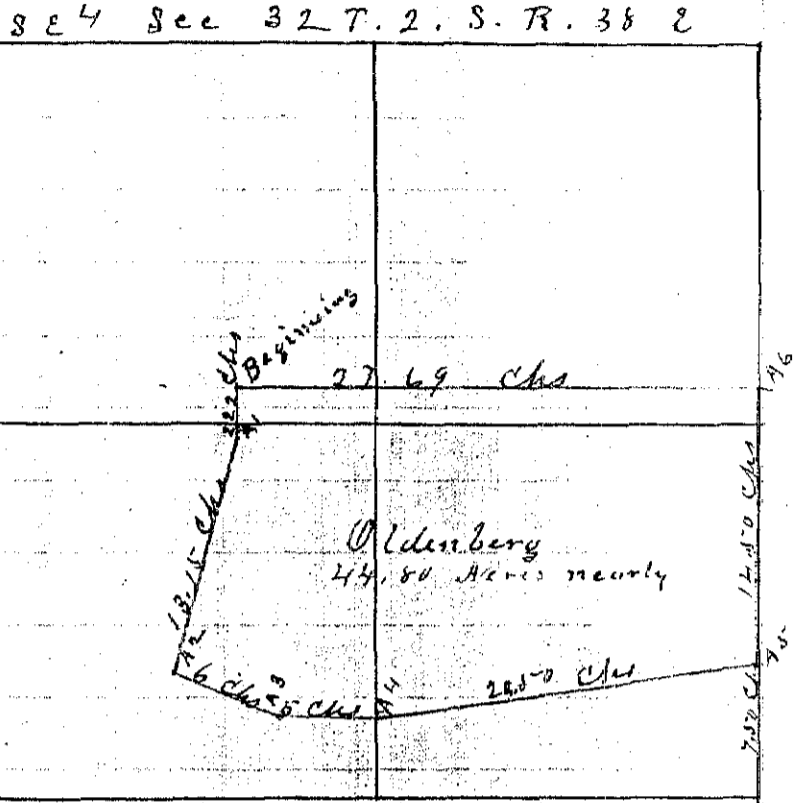
1892
1892

No 172

Township 2 South Range 38 East Union County, Oregon.

For Chas Nessler

CHAINS
LKS.



I commenced this survey at a point 18 chs S and 27.69 chs W of the N E corner of the SE⁴ of Sec 32, T. 2. S. R. 38 E and from thence ran S. Var 20° E

- 2 22 To Angle 1 Set Stake from which a Balun Tree 18ⁱⁿ in Diameter Bears N 74° West distant 10 lks from thence S 14° W
- 13 15 " Angle 2 set mound of Rock from which a Balun Tree 18ⁱⁿ in Diam Bears N 9° W distant 75 lks thence S 72° E
- 6 00 To Angle 3 set stake from which a Balun Tree 6ⁱⁿ in Diameter Bears N 65° E distant 29 lks thence S. 82° E
- 5 00 To Angle 4 set stake and mound of Rock from which a Balun Tree 20ⁱⁿ in Diameter Bears N 65° East distant 33 lks from thence N 81° E
- 20 50 To Angle 5 set stake on East Boundary of Sec 32. 7.50 chs from the SE corner of the Sec from thence N
- 14 50 To A 6 set stake on the East Bdy of Sec 32. 22 chs from the SE corner of the Sec from thence W
- 27 69 To the place of Beginning these Boundaries contain the Land sold by Nessler to Oldenberg and contain 44.80 Acres of Land nearly

J L Curtis
County Surveyor