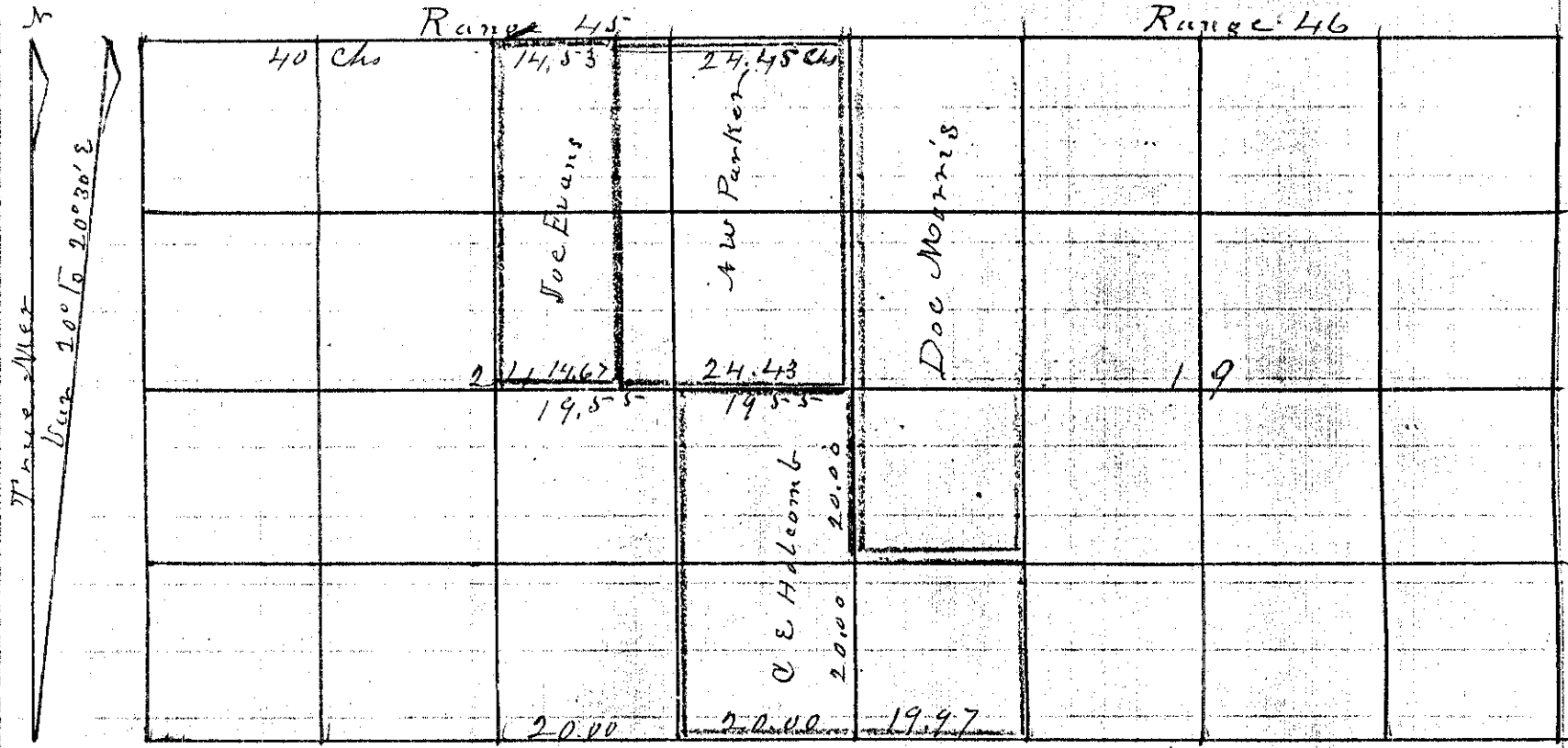


No 169

Township 9 South Range 45 & 46 East Union County, Oregon.

For C E Holcomb et al Sept 7th & 8th 1892

CHAINS
LKS.



From Corner to Sec 19x30x24x25 East Var 21° 20' E

- 20 00 Set Temporary corner
- 39 93 intersected 1/4 corner 2 1/2' N of corner
Back on true line
- 19 97 Set Basalt Rock 10x12x18 for corner to SE corner of SW⁴ of SW⁴ Sec 19
From the corner to Sec 24x25x19x30 West
- 40 00 intersected 1/4 Sec corner between Secs 24 & 25 Thence East
- 20 00 Set Stake with mound for the SW corner of East half of SE⁴ Sec 24
From NE corner Sec 24 W on Random Var 21° 45'
- 78 78 intersect the NW corner of Sec 24 back on true line
- 40 00 intersect 1/4 Sec corner on N Bdy of Sec 24
- 78 78 intersect NE corner of Sec 24
From the 1/4 Sec corner on the N Bdy of Sec 24 run straight line to the
1/4 Sec corner on the South Bdy of Sec 24
From the 1/4 Sec corner on the East Bdy of Sec 24 West
- 39 10 Bisection the line from the 1/4 corner on the N to the 1/4 corner on the South of Sec 24
From the Centre of Sec East
- 14 67 Set corner for Joe Evans' South east corner Thence East
- 19 55 Set Rock 18x9x6 for L L Holcombs corner it being the NW corner of SE⁴ Sec 24

J L Curtis
County Surveyor