

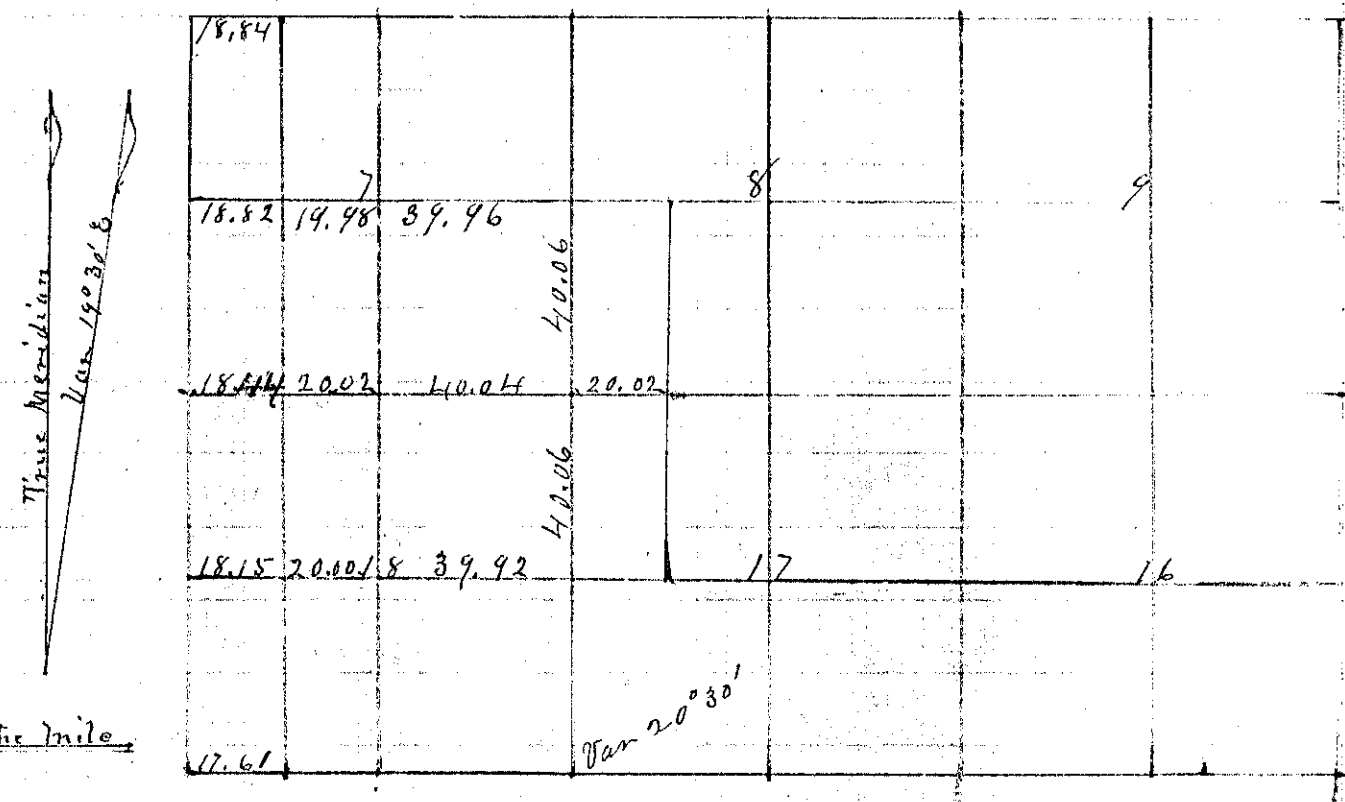
RECORD OF SURVEY

N<sup>o</sup> 163

Township 2 South Range 39 East Union County, Oregon.

by W Ruckman et al Done May 25<sup>th</sup> 1892

CHAINS.  
LKS.



From the 1/4 Sec corner between Sec 17 & 18 N 40 Chs set temporary corner for Sects 7, 8, 17 and 18

From the Township line at the corner between Secs 7 & 18 N

- 18 44 Set temporary stake for the NE corner of NW<sup>4</sup> of NW<sup>4</sup> Sec 18
- 20 07 From NE corner of NW<sup>4</sup> of NW<sup>4</sup> Sec an established corner West Established corner to Sections 7, 8, 17 & 18 after dividing the distance between the NE corner of the NW<sup>4</sup> of NW<sup>4</sup> Sec 18 and the NE corner of the NW<sup>4</sup> of NW<sup>4</sup> of Sec 17
- 80 18 From the corner to Sections 5, 6, 7 and 8 South Intersected corner to Sections 7, 8, 17 & 18 move the corner 6 links north and established the corner to Sections 7, 8, 17 & 18 by placing a Rock 8x8x12 marked with a cross and by driving a stake
- 410 08 From the 1/4 Sec corner between Sec 17 & 18 W Intersected the 1/8 corner as established thence W
- 20 00 Set temporary stake to the NE corner of NW<sup>4</sup> of SW<sup>4</sup> Sec 18 thence
- 18 15 Intersected the Township line
- 18 64 From the 1/4 corner on the West line of Sec 7 East on Random line Set temporary stake for NE corner of NW<sup>4</sup> of SW<sup>4</sup> Sec 7 thence E
- 59 92 Intersected 1/4 Sec corner between Sec 7 & 8 24 links south of corner
- 59 94 From the 1/4 corner between Sec 7 & 8 West on true line Set corner stone 4x10x12 for corner to the NW<sup>4</sup> of SW<sup>4</sup> Sec 7

J L Curtis  
County Surveyor