

1890

N<sup>o</sup> 127

Township's 3 and 4 Range 38 E Willam Union County, Oregon.

CHAINS. LKS.

For Joseph Clark

Nov 15 1890

Commenced at the N.W. corner of Sec. 5 Thence Var 20° 20'

41 50 To 1/4 Sec corner between Sections

5 and 6 from Thence East Var 20° 20'

40 Set temporary corner for centre of Sec

From the 1/4 Sec corner between Secs 4 and 5 run W Var 20° 20'

40 22 Intersected the line from the 1/4 Sec corner between Sections 5 and 6 divided the distance and established corner for the centre of Sec 5

From centre of Sec run South

20 Thence W

20 Thence N

20 Intersected line from 1/4 Sec corner to centre of Sec

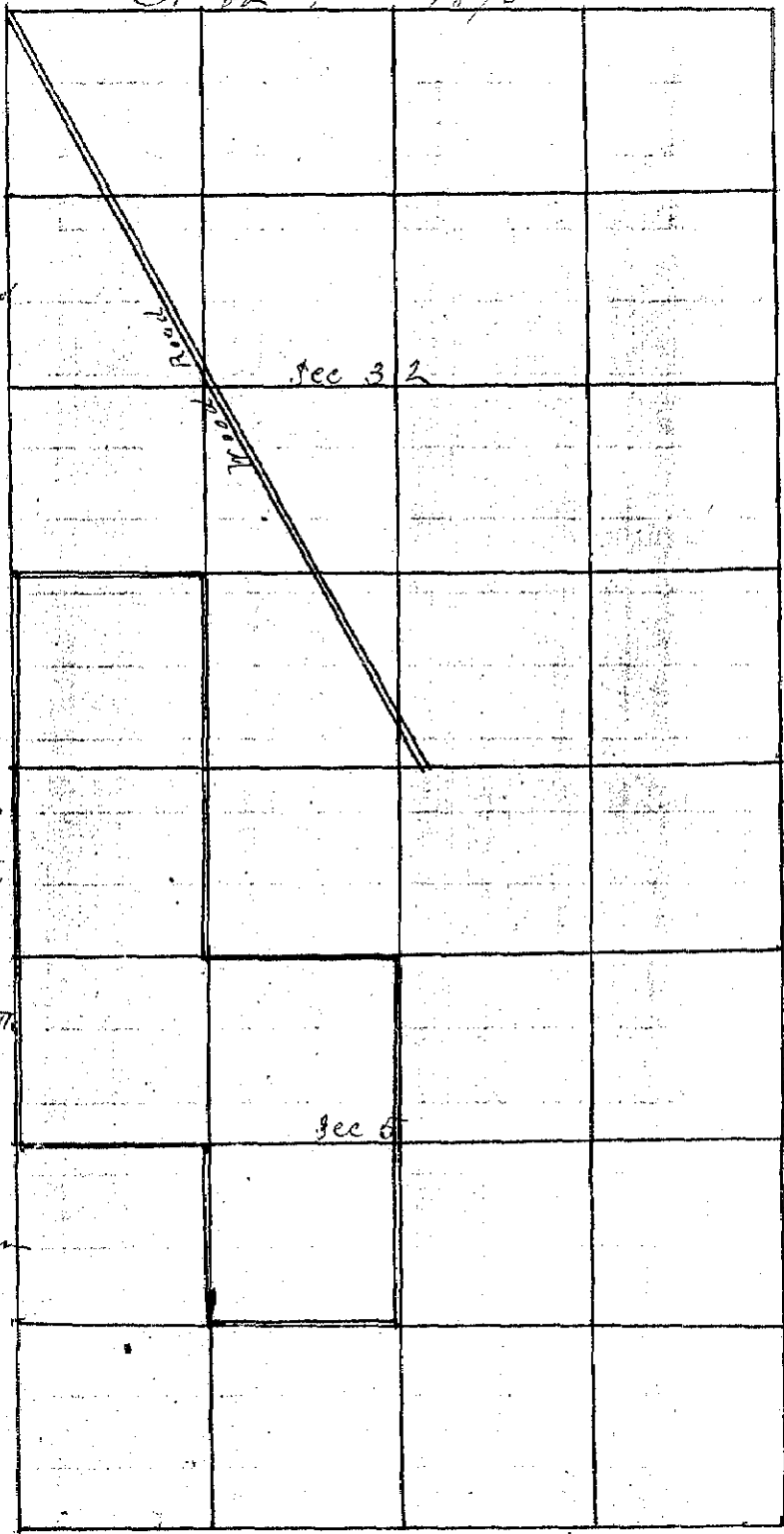
From the S.W. corner of Sec 32 T. 3 S, Range 38 E run North Var 20° 20'

20 Set corner for S.W. 1/4 Sec 32 Thence East

20 Set corner Thence South

20 Intersected Township line between Townships 3 and 4 S Range 38 E

All corners on this Survey are designated by Rocks marked 1/8 and mounds of Rock



J. L. Curtis  
County Surveyor