

270

270

1890

# RECORD OF SURVEY

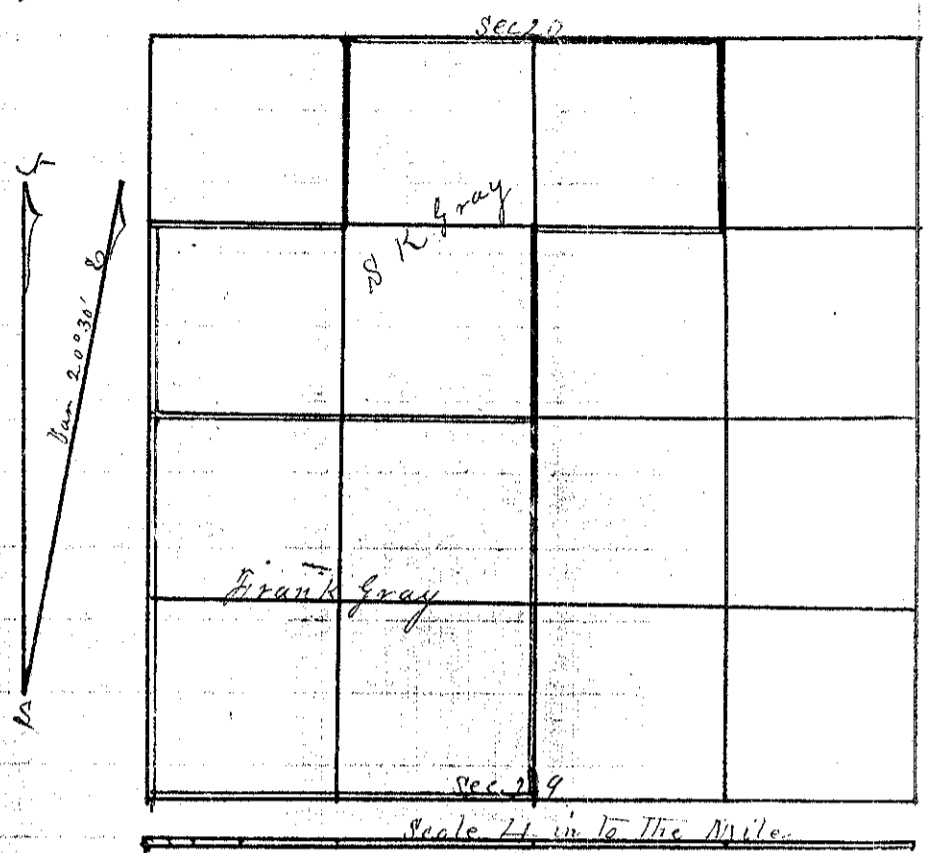
No 125

Township 2 South Range 37 East Union County, Oregon.

CHAINS. LKS.

S K Gray and Frank Gray

Oct 13 and 14 1890



- 40 Commenced at the SW Corner of Sec 20 Run East on Var 20°30'
- 40 The 1/4 Sec Corner between Secs 20 and 29
- Thence N Var 20°30'
- 20 Set Rock for 1/16 Corner
- 40 Set Rock for Centre of Sec
- From the 1/4 Sec Corner between Secs 20 and 21 East on Var 20°30'
- 20 11 Set Rock for 1/16 corner
- 40 22 Intersected line from 1/4 Sec Corner between Sec 20 and 29 West on same line
- 20 Set Rock for S K Gray's NW Corner Thence South
- 20 Set Rock at the SW corner of the NE 1/4 of the SW 1/4 of the Sec
- From the NW corner of the SW 1/4 of the SE 1/4 of the Sec Var 20°30' run East
- 20 Set Post for SE corner of the NW 1/4 of the SE 1/4 Thence North
- 20 Intersect the line running from the 1/4 Sec Corner between Secs 20 and 21
- For Frank Gray's Claim Commenced at the 1/4 Sec Corner between
- Secs 20 and 29 Thence South Var 20°30'
- 40 Set Rock for centre of Sec Thence West
- 40 Intersect Sec line between Sec 29 and 30 at 1/4 Sec Corner

J L Curtis  
County Surveyor