

RECORD OF SURVEY

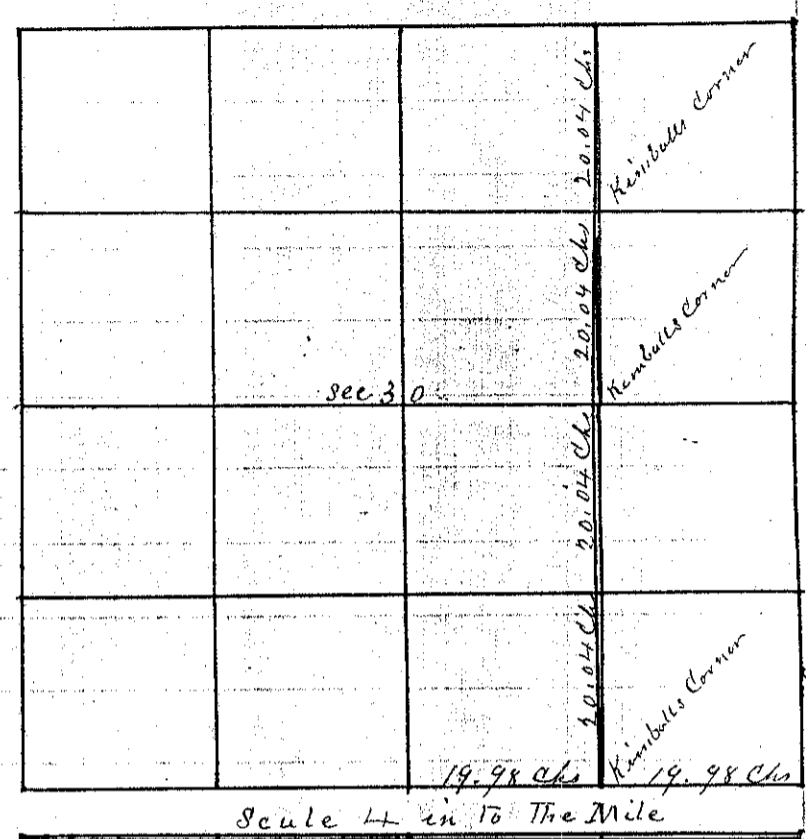
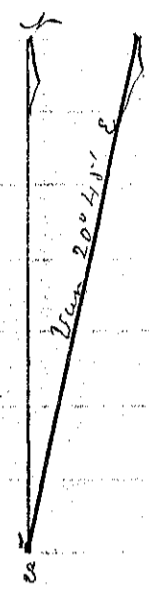
No 124

Township 1 N Range 39 East Union County, Oregon.

W Mc Donald

Oct 8th 1890

CHAINS. LKS.



19 98
19 98
80 16
20
20

This survey was made to discover if Mr Kimball had made an error in establishing the line through the East half of Sec 30

I therefore chained from the 1/4 Sec Corner ^{East} between Sec 30 and 31 to Mr Kimball's Corner I then chained from the SE corner of Sec 30 West to the same corner

I then ran a random line North on a Variation of 20° 45' intersected the Sec line 30 link West of Mr Kimball's Corner

I then chained from the NE corner of Sec 30 West

I then chained East from the 1/4 Sec corner between Sec 19 and 30 and found Mr Kimball's Corner correct

I then ran straight line from Mr Kimball's Corner on the North side of the Sec to his corner on the South side of the Sec and found his centre Stake and Rock to be 25 links too far East

J L Curtis
County Surveyor