

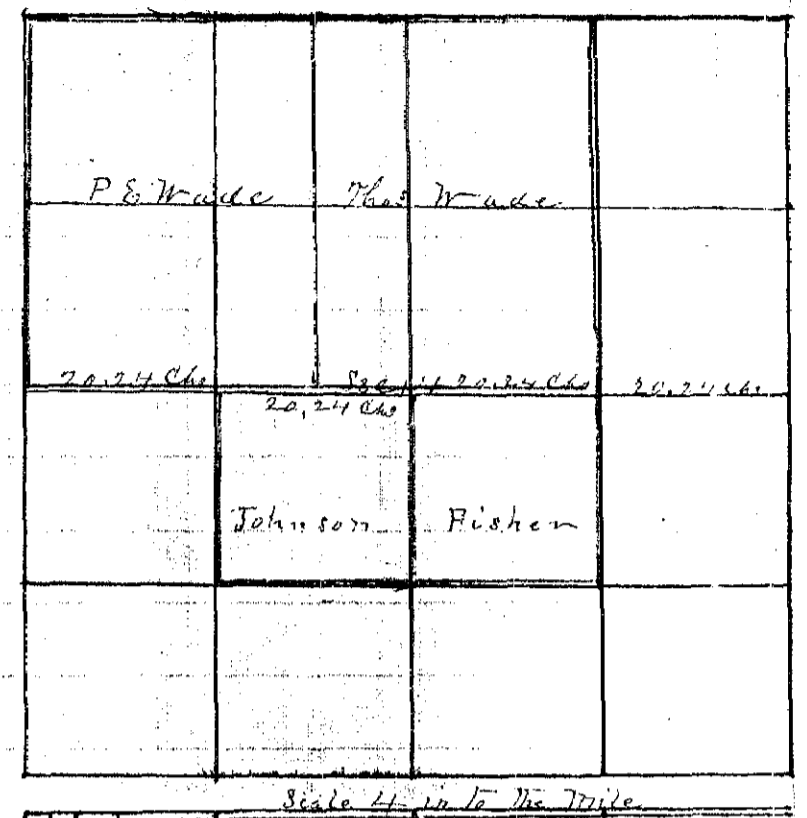
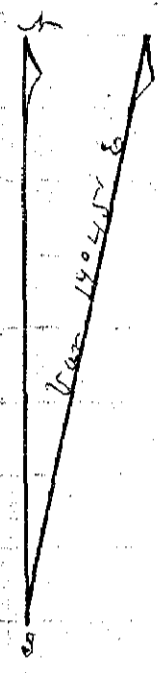
RECORD OF SURVEY

No 123

Township 1 North Range 38 East Union County, Oregon.

CHAINS. LINKS.

P E Wade Thos Wade and others Oct 6th 1890



Commenced at the 1/4 sec corner between Sections 14 and 15 East on Var 19° 45'

- 20 Set Descriptive corner
- 40 " " Centre Post
- 60 " " Corner
- 80 96 Intersected sec line 17 links south of the 1/4 sec corner
- From the 1/4 Sec corner between Sections 13 and 14 West on true line
- 20 24 Set Rock marked 1/8 and Post
- 40 48 " " " C.S. " "
- 60 72 " " " 1/8 " " "
- 80 96 To 1/4 Sec corner between Sec^s 14 and 15

J L Curtis
County Surveyor