

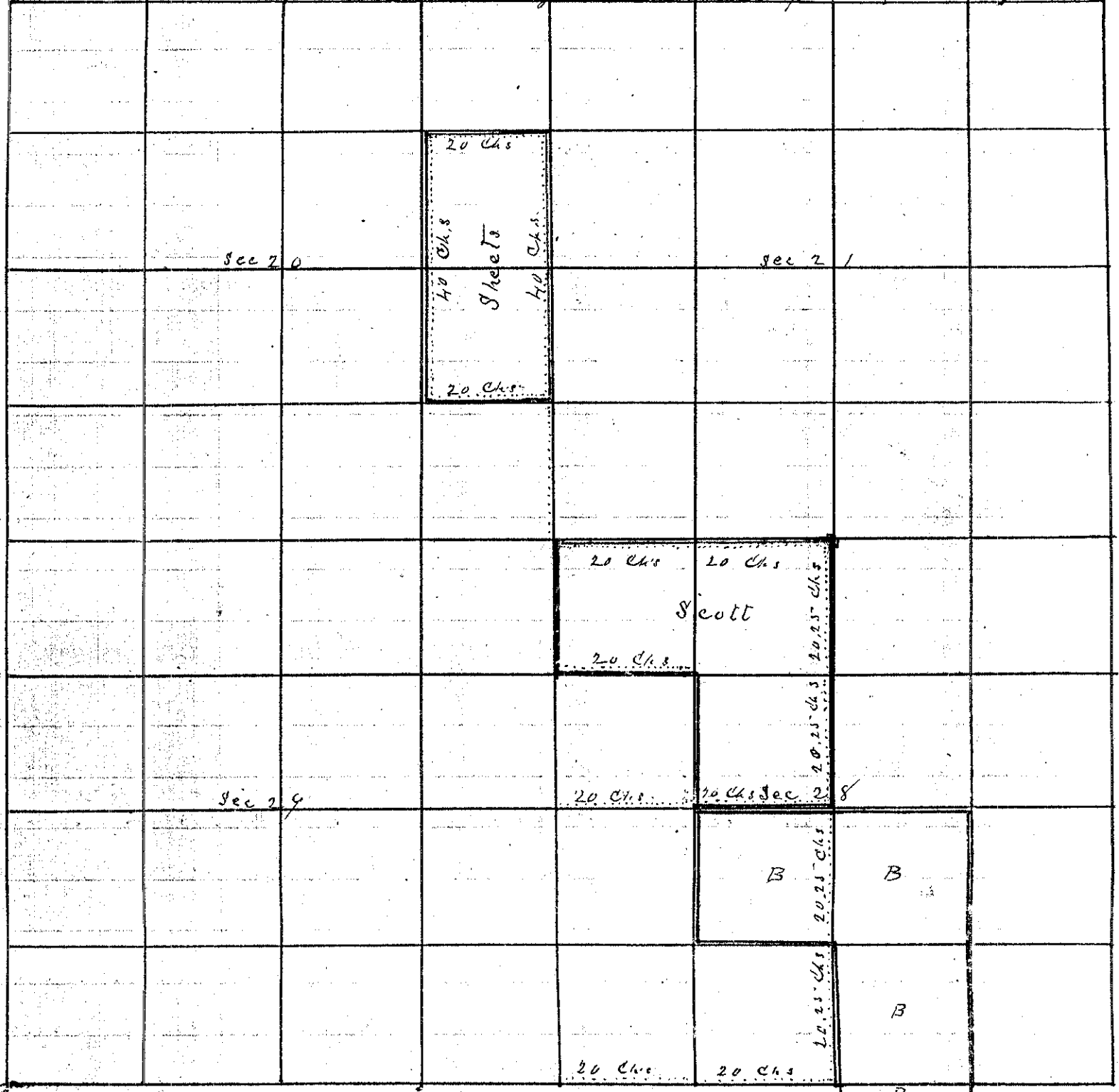
RECORD OF SURVEY

No 121

Township 3 South Range 38 East Willaber Union County, Oregon.

CHAINS. LKS.

A & Sheets to Scott and Benj Brown Sept 19th 1890



Commenced at the SW corner of Sec 28 run E on Var of 20° 30' E 40 Chs found 1/4 Sec Corner
thence N. Var 19° 30' E 40.50 Chs set Rock for Centre of sec thence N on same Var 40.50 Chs
and set Round Rock Mound from 1/4 Sec Corner; thence W on Var 19° 20 Chs set Rock
for 1/16 Sec Corner thence W. Var 19° E 20 Chs to NW corner of Sec 28

Commenced at 1/4 Sec corner between Sec 28 and 29 run E 20 Chs to 1/16 corner set by
J K Romig thence N. Var 19° E 20 Chs set Rock for the NW corner of SE 1/4 of NW 1/4 of
Sec 28:

Commenced at the NW corner of Sec 28 run N var 20° E 20 Chs set Rock for
SE corner of Sheets Land thence N 20 Chs to 1/4 Sec thence N 20 Chs to the
NE corner of Sheets Land to Rock Mound set by J K Romig thence W 20 Chs
to Sheets' NW corner thence S 40 Chs to Sheets' SW corner established by J K Romig
thence E 20 Chs to the SE corner of Sheets Land all corners noted are designated
by Rocks marked 1/4 and 1/8 sec respectively

J. L. Curtis
County Surveyor