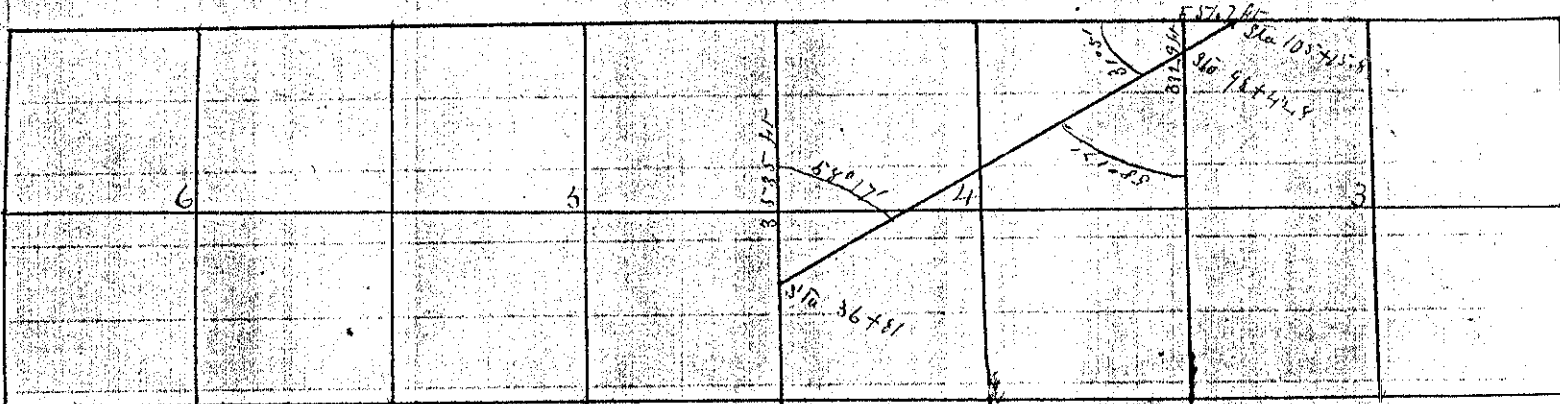


RECORD OF SURVEY

No. 118

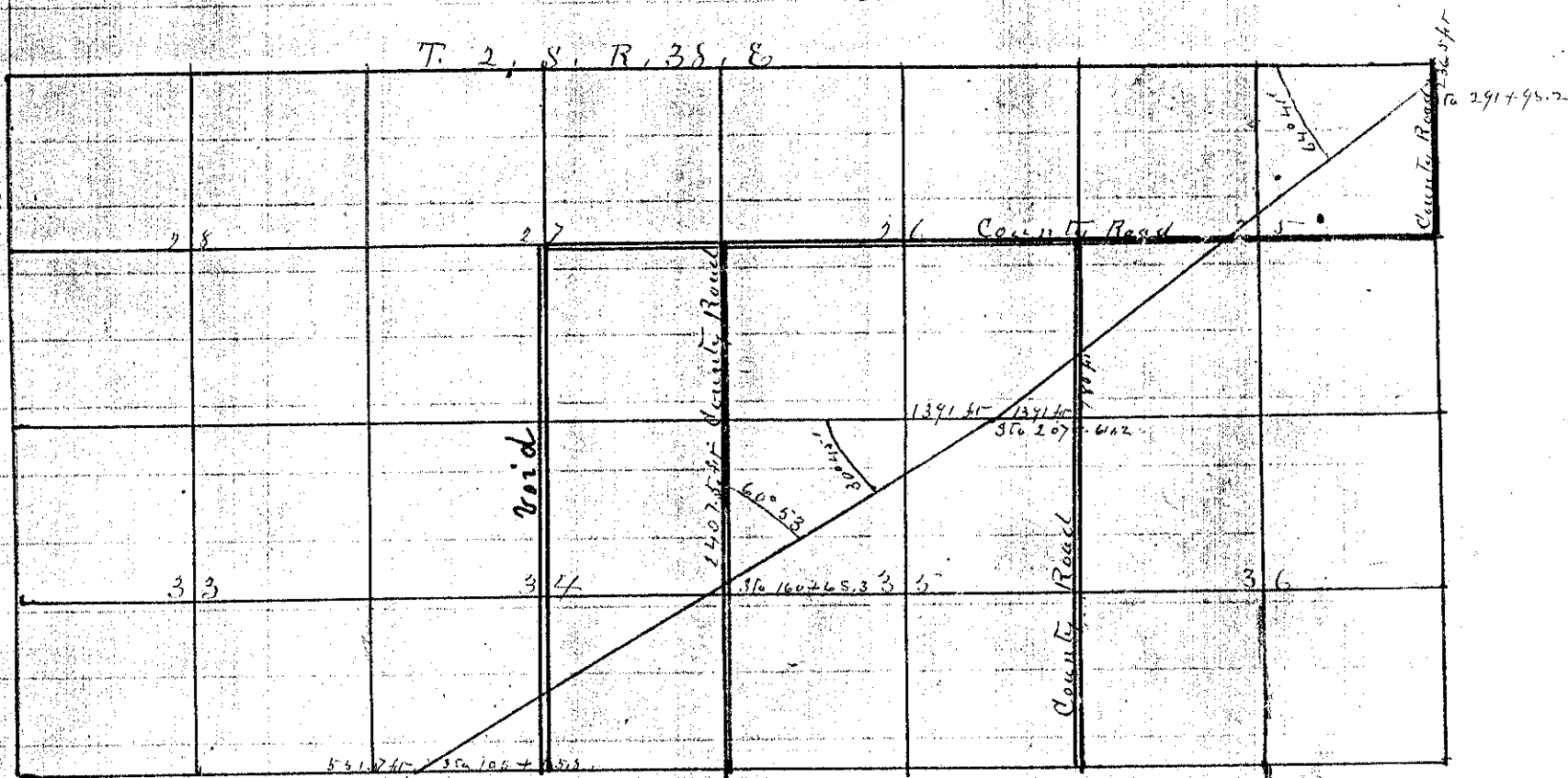
Township 3 S Range 38 E Union County, Oregon.

CHAINS. LKS. Elgin Branch C.R. and N.R.R. Connecting County Roads and Sec Corners with the R.R. Done in the month of Aug A.D. 1890



Established Lost Corner between 33 and 34 T. 2, S. and Sec. 3 and 4 T. 3, S. R. 38. East by running a line from the 1/4 sec corner between Secs 5 and 32 East to the corner of Secs 2 x 3 x 34 and 35 found an excess of 27 ft. divided the excess from the starting point and established corner to Secs 34 x 33 and 34 by burying a Rock containing 600 solid inches with bearing Trees as follows: To wit

- A Willow 8" in Diameter bearing N. 6° E. Distant 174 ft
- A Willow 8" " " " " N. 52° 15' West Distant 472.0 ft
- N.W. Corner of Sec 4 Distant to R.R. 35.85 ft. Corners at Sta. 36+81 Angle 58° 17'
- N.E. " " " " " " " " 332.9 ft " " " " 98+42.8 " 31° 51'
- N.W. " " " " " " " " 557.7 ft " " " " 105+15.8 " "

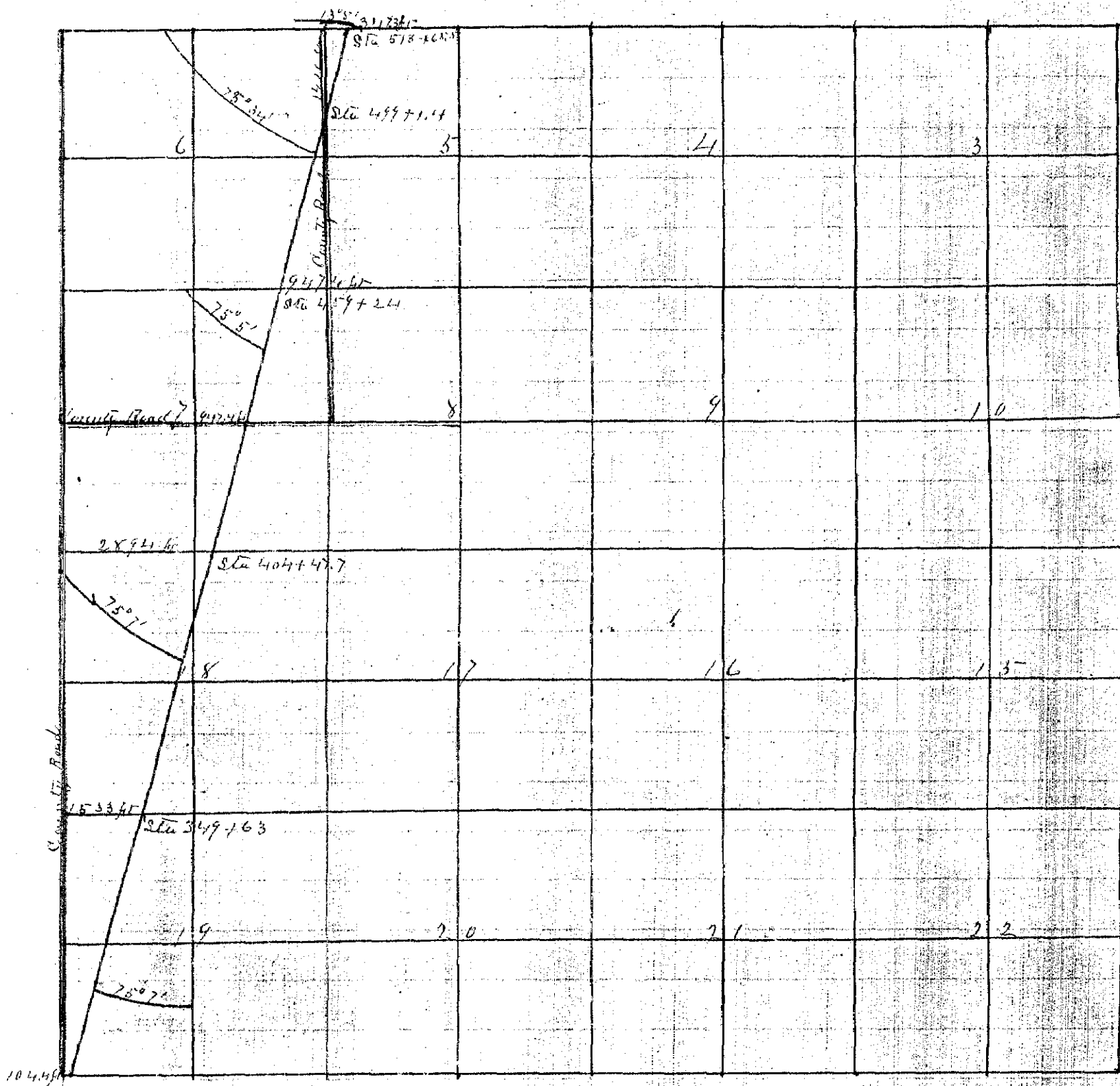


- S.W. Corner Sec 34 Distant to R.R. 557.7 ft. Corners at Sta. 105+15.8 Angle 31° 51'
- N.E. " " " " " " " " 2407.5 ft " " " " 160+65.3 " 60° 53'
- N.E. " " " " " " " " 1391 ft " " " " 207+64.2 " 30° 45'
- N.E. " " " " " " " " 236.5 ft " " " " 291+98.2 " 64° 41'

RECORD OF SURVEY

201
261
1890

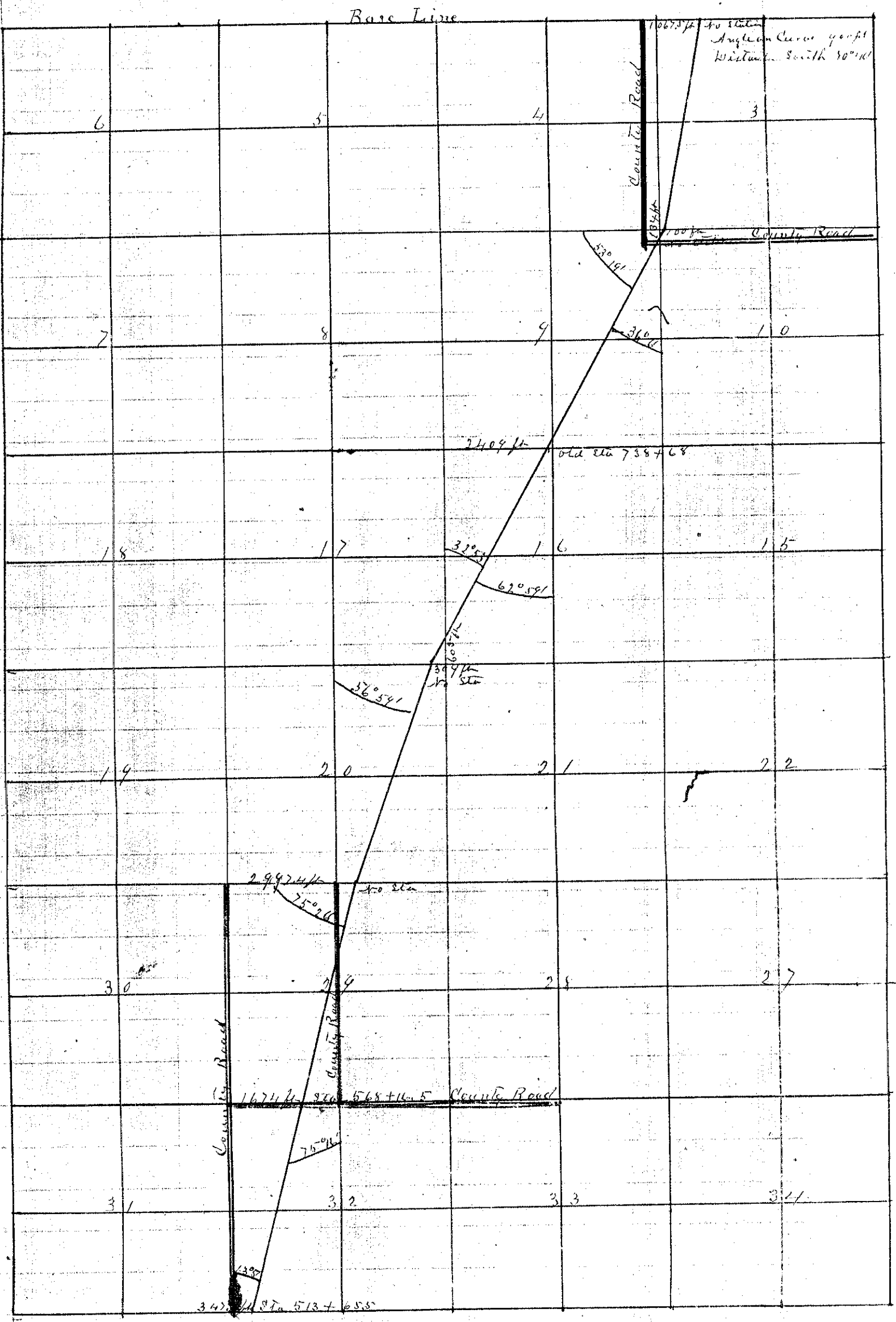
Township 2 S Range 39 E Union County, Oregon.



Section	Direction	Distance	Station	Angle
SW Corner Sec 19	Distance to R.R.	104.45 ft	Corner at Sta	Angle
SW	"	18	1533 ft	349+63 75° 71'
SW	"	7	2894	404+47.7 75° 71'
SE	"	6	947.4	459+2.4 75° 51'
SE	"	6	1416	499+1.4 135° 34'
"	"	"	347.5	578+65.5 75° 34'

Township 1 South Range 39 East Union County, Oregon.

CHAINS. LKS.

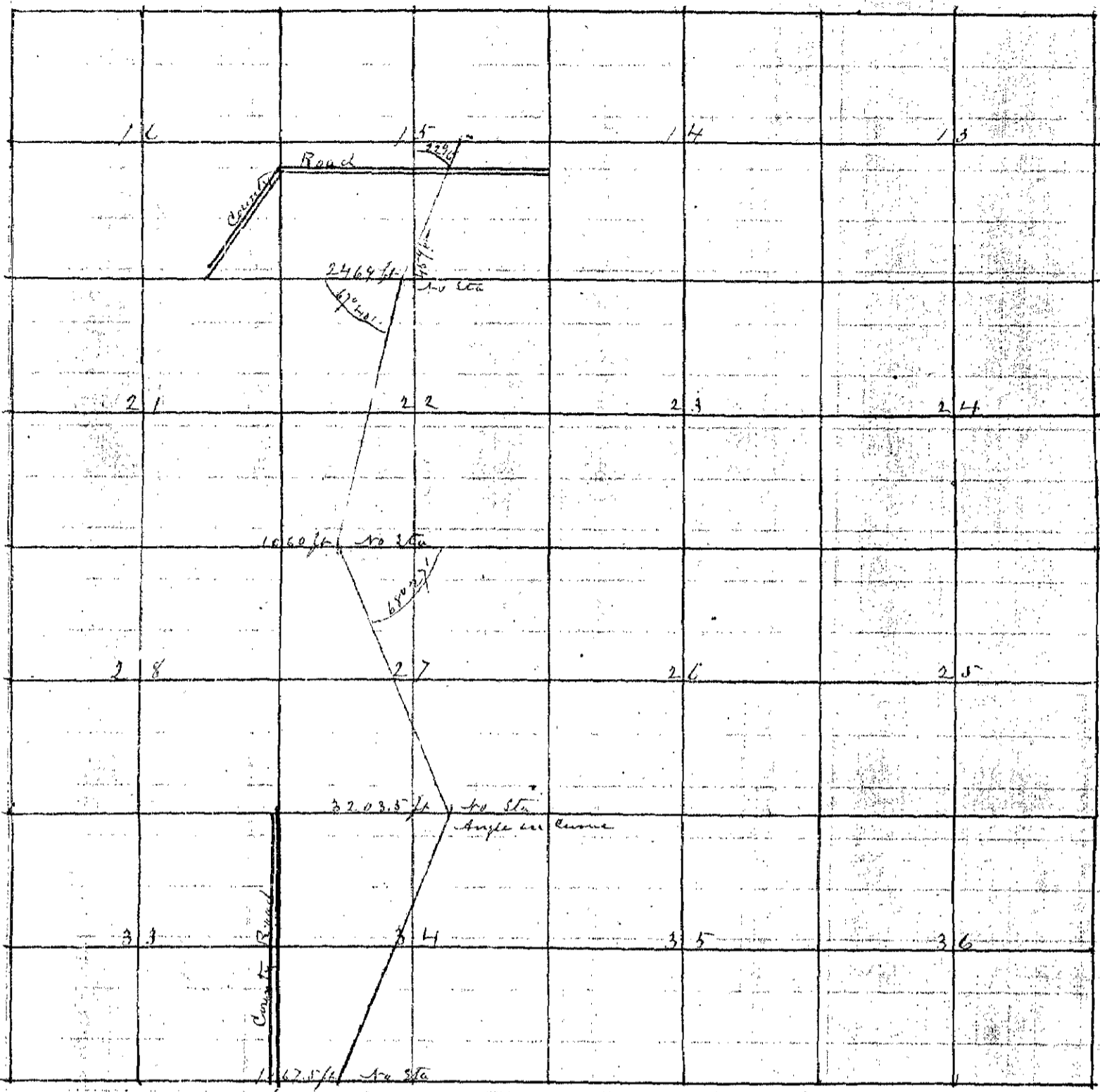


SW Corner Sec 32	Distance East to R.R.	347.3 ft	Connect at Sta	513+65.5	Angle	133° 51'
NW "	"	1674 "	"	568+16.5	"	75° 16'
NW "	"	2997.4 "	"	"	"	75° 02'
S' 210°	"	16 "	West "	309 "	"	38° 2'
"	"	"	North "	605 "	"	32° 1'
NW "	"	"	East "	2409 "	"	62° 1'
Sh R	"	9 "	"	190 "	"	33° 1'
"	"	"	South "	134 "	"	36°
to Sta	"	3 "	Station "	1067 "	"	to station

RECORD OF SURVEY

263
1890

Township 1 North Range 34 East Union County, Oregon.



S W Corner Sec 34	Distance East to RR	1067.5 ft	Curve at Sta	Angle on Curve
N 10° W	" " " "	3203.5	" " "	" " "
N 10° W	" " 27	1060	" " "	68° 27'
N 10° W	" " 22	2469	" " "	67° 40'
1/4 Sec between 15 and 22	" North	459	" " "	22° 16'

J. L. Curtis
County Surveyor