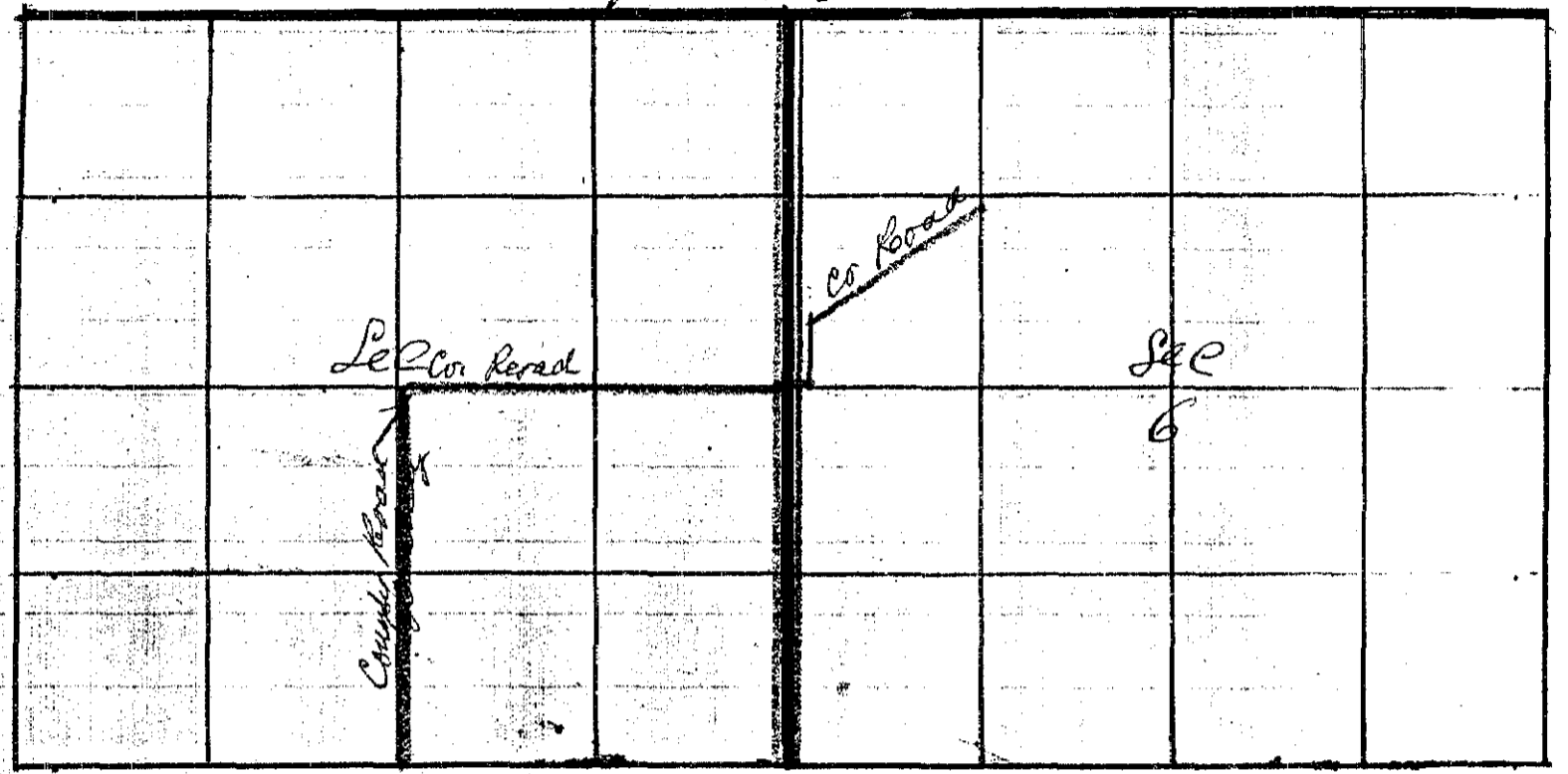


RECORD OF SURVEY  
No. 82

Township T South Range Ranges 38 & 39 E. Union County, Oregon.

Union County June 27 1889

CHAINS. LKS.



I Commenced at the corner to Sec 1-12-6 & 7  
 on Range line bet Ranges 38 & 39  
 Thence North bet Sec 1 & 6  
 (on 1215' 8")

- 40 00 Set Temporary 1/4 Sec corner
- 79 42 Vateded Base line at corner to Sec 1 & 6  
 Making an excess of 42 lks as per US field notes  
 Thence South
- 39 21 Set Stone 8 x 12 x 31 for 1/4 Sec corner bet Sec 1 & 6
- 79 42 The corner to Sec 1-12-6 & 7

W. Frank County Surveyor