

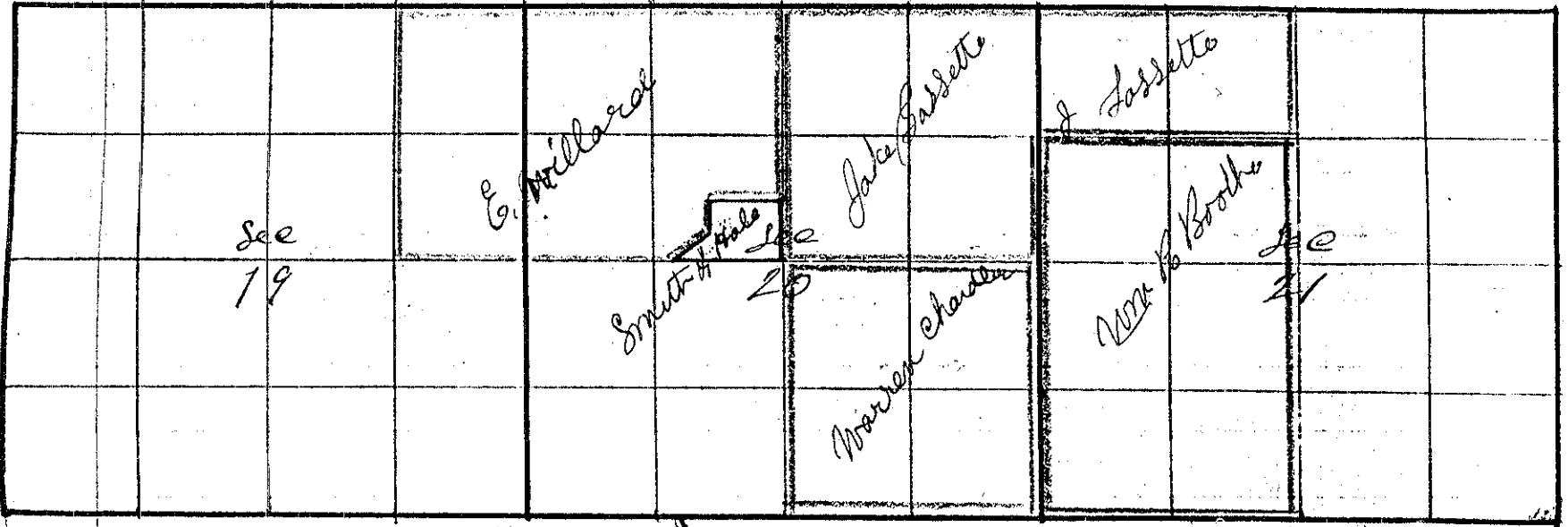
Township 2 South

Range 40 East W.M., Union County, Oregon.

GRADES

LKS.

W.R. Boothe J.M. Cassette Warren Chandler & E. Willard March 20th 1889



I Commenced at the Corner to See 19=30=24 & 25 -
 on Guide Meridian line bet Ranges 39 & 40 East W.M.
 Thence East bet See 19 & 30

Offset 500 lks North Var 20° E
 Grande Round River Course S 45° W
 Offset 500 lks North
 Thence East on Offset

39 97 Let back South 500 lks to line found no 1/4 Sec corner
 79 97 found no Sec. Corner set temporary corner to See 19=20=29 & 30
 Thence East bet See 20 & 29
 Var 20° E

39 90 found no 1/4 Sec corner set temporary 1/4 Sec corner
 79 80 found no Sec corner set temporary corner to See 20=21=28 & 29
 Thence East bet See 21 & 28
 Var 20° E

40 00 found no 1/4 Sec corner set temporary 1/4 Sec corner
 81 98 the corner to See 21=22=27 & 28
 Making an Excess of 198 lks as per U.S. Field Notes
 Thence West bet See 21 & 28

40 33 Let Post in Mound of Stone for 1/4 Sec corner bet See 21 & 28
 80 66 The corner to See 20=21=28 & 29
 Thence West bet See 20 & 29

40 23 The 1/4 Sec corner bet See 20 & 29
 80 46 The corner to See 19=20=29 & 30
 Thence West bet See 19 & 30

80 63 The corner to See 19=30=24 & 25 -

The corner to See 18=19=18 & 24 on the
 Guide Meridian line bet Ranges 39 & 40 East
 Thence East bet See 18 & 19 Var 20° E

39 60 The 1/4 Sec corner bet See 18 & 19

Thence East bet Sec 18 & 19

Var 20° E

40 00 Set Temporary corner to Sec 17=18=19 & 20

Thence East bet Sec 17 & 20

Var 20° E

39 75 Set Temporary 1/4 Sec corner to

80 75 The corner to Sec 16=17=20 & 21

Making an Excess of 123 1/2 as per U.S. Field Notes

I therefore run west bet Sec 17 & 20

40 16 The 1/4 Sec corner bet Sec 17 & 20

80 32 The corner to Sec 17=18=19 & 20

Thence West bet Sec 18 & 19

39 91 The 1/4 Sec corner bet Sec 18 & 19

These lines establish the E & W Points for corner on

The corner to Sec 4=5=32 & 33 on Twp line bet 22 & 33

Thence North bet Sec 32 & 33

Var 20° E

40 00 found no 1/4 Sec corner

80 00 found no Sec corner

Thence North bet Sec 28 & 29

Var 20° E

40 00 found no 1/4 Sec corner

80 00 Set Temporary corner to Sec 20=21=28 & 29

Thence North bet Sec 20 & 21

Var 20° E

20 00 Set Temporary 1/8 corner

40 00 Set Temporary 1/4 Sec corner

60 00 Set Temporary 1/8 corner

51 26 The corner to Sec 16=17=20 & 21

Making an Excess of 126 1/2 as per U.S. Field Notes

Thence South bet Sec 20 & 21

20 10 Set Stone 4x9x21 inch for 1/8 corner

40 21 Set Stone 4x7x26 " " 1/4 Sec corner bet Sec 20 & 21

60 31 Set Stone 8x10x32 " " 1/8 corner

80 42 Set Stone 9x10x24 " " corner to Sec 20=21=28 & 29

The corner to Sec 5=6=31 & 32

on Twp line bet Townships 2 & 3 South

Thence North bet Sec 31 & 32

Var 20° E

40 00 found no 1/4 Sec corner

CHAINS	LKS.	
		Thence North bet Sec 31 & 32
80	00	found no Sec corner Set temporary corner to Sec 29=30=31 & 32 Thence North bet Sec 29 & 30 Var 20° E
35	67	Grande Round River 248. lks across Course S.W.
80	00	Set temporary corner to Sec 19=20=29 & 30 Thence North bet Sec 19 & 20 Var 20° E
40	00	Set temporary 1/4 Sec corner
80	00	Set temporary corner to Sec 17=18=19 & 20 Thence North bet Sec 17 & 18 Var 20° E
40	00	found no 1/4 Sec corner
81	63	Intersect 78 lks west of the corner to Sec 7=8=17 & 18 making an excess of 163 lks as per U.S. Field Notes Thence South 8 1/4 West
80	39	Set Stone 10 x 12 x 20 for corner to Sec 17=18=19 & 20 Thence South bet Sec 19 & 20
40	20	Set Stone 9 x 10 x 18 for 1/4 Sec Cor bet Sec 19 & 20
80	40	Set Stone 10 x 11 x 25 for corner to Sec 19=20=29 & 30
		The 1/4 Sec corner bet Sec 16 & 21 Thence South through Sec 21 Var 20° E
79	68	The 1/4 Sec corner bet Sec 21 & 28 Thence North through center Sec 21
19	92	Set Stone 10 x 12 x 23 for 1/6 corner in center S 1/2 Sec 21
39	84	Set Stone 9 x 12 x 24 for center Sec 21
59	76	Set Stone 8 x 12 x 18 for 1/6 corner in center N 1/2 Sec 21
		The 1/4 Sec corner bet Sec 20 & 29 Set Stone 8 x 10 x 24 for 1/4 Sec corner bet Sec 20 & 29 Thence North through Sec 20
40	00	Set temporary center Sec 20
80	41	The 1/4 Sec corner bet Sec 17 & 20 Set Stone 9 x 10 x 20 for 1/4 Sec corner bet Sec 17 & 20
		The 1/4 Sec corner bet Sec 20 & 21 Thence West through Sec 20
40	36	Set Stone 9 x 10 x 80 for center Sec 20
80	49	The 1/4 Sec corner bet Sec 10 & 20

Township 2 South

Range 40 East

Union County, Oregon.

20 39 The $\frac{1}{4}$ Sec corner bet Sec 19 & 20
Thence west through Sec 19
Set Stone 8 x 12 x 16 for $\frac{1}{16}$ corner in Center $\frac{1}{2}$ Sec 19

The $\frac{1}{4}$ Sec corner bet Sec 18 & 19
Thence East bet Sec 18 & 19

Var 20° E.

40 55 The corner to Sec 17 = 18 = 19 & 20
Thence west

20 27 $\frac{1}{2}$ Set Stone 6 x 9 x 18 for $\frac{1}{2}$ corner on North Boundary N $\frac{1}{4}$ Sec 19
Thence South through N $\frac{1}{4}$ Sec 19
Var 20° E

40 20 The Center $\frac{1}{2}$ Sec 20

Survey of a Fractional Tract in the SE $\frac{1}{4}$ NW $\frac{1}{4}$ Section 20

I commenced at the center of Sec 20 a stone 9 x 10 x 30 inches
Thence west 68 Rods Set Stone 6 x 16 x 30 inches
" N 52° E $30\frac{1}{4}$ " " " 8 x 10 x 23 "
" North 16 " " " 8 x 10 x 19 "
" East 44 " " " 3 x 8 x 20 "
" South $34\frac{1}{2}$ " To Place of Beginning

J. W. Kimbrell County Surveyor