

No. 70

Township 3 South

Range 38 East W.M., Union County, Oregon.

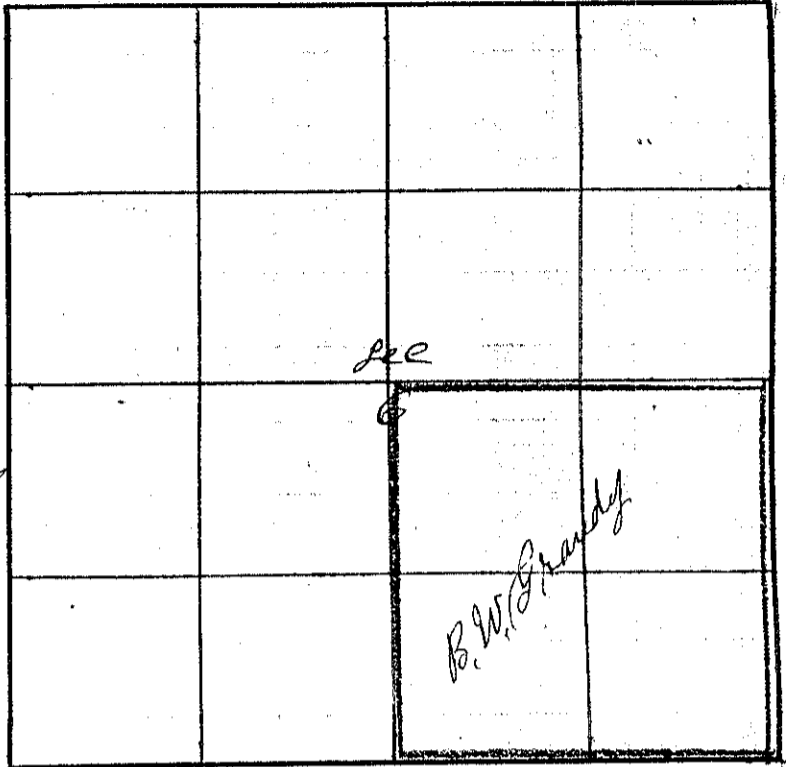
B. W. Grandy

March the 19<sup>th</sup> 1889

For the Re establishment of  
the corner to Sec 5-6-7 & 8

I Commenced at the Corner  
to Sec 7-8-17 & 18  
which is a Post in Mound  
of Stone

Thence North bet Sec 7 & 8  
Var 20° E



4 10 Lake 186 fks across

40 00 found No 1/4 Sec corner

80 00 Set Temporary Corner to Sec 5-6-7 & 8

Thence North bet Sec 5 & 6  
Var 20° E

40 15 Intersect at the 1/4 Sec corner bet Sec 5 & 6

Thence South bet Sec 5 & 6  
Var 20 15' E

40 05 Set Stone 8 x 12 x 20 inches for the Corner to Sec  
5-6-7 & 8 in center of Street

from which  
The N.W. corner of ... House  
bears East

J. W. Kimbrell County Surveyor