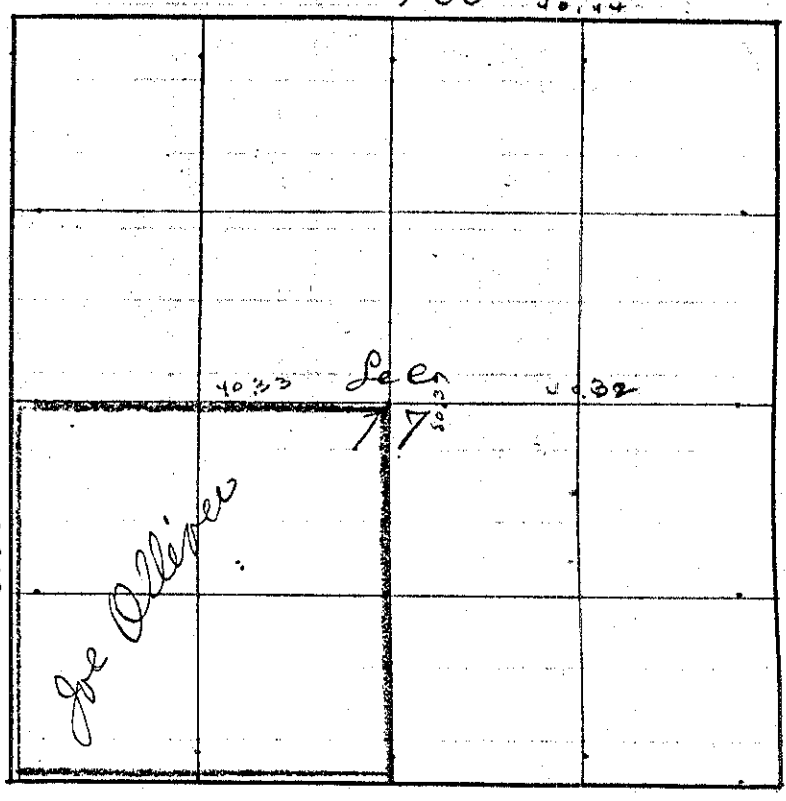


Township 1 South Range 39 East W.M. Union County, Oregon.

Joe Oliver Dec 22nd 1888

I Commenced at the Corner to
Sec 7-18=12 1/2 1/8 on Range line
bet Ranges 38 1/2 39
Thence East bet Sec 7 1/2 1/8
Per 20° E



- 70 Through Schotes House
- 48 57 Willow creek 60 lbs across course N.E.
- 78 52 Set Temporary Corner to Sec 7=8=17 1/2 1/8
Thence East bet Sec 8 1/2 1/7
- 40 59 Set Temporary 1/4 Sec corner
- 50 59 Set Temporary Corner to Sec 8=9=16 1/2 1/7
- 77 20 found NW Sec corner Thence East bet Sec 9 1/2 1/6
- 79 20 found NW Sec corner
- 81 84 found the corner to Sec 9=10=15 1/2 1/6 Post decayed and I Reestablished
by planting a Stone 18 x 10 x 6 in for Corner to Sec 9=10=15 1/2 1/6
Thence West
- 82 28 Set Temporary Corner to Sec 8=9=16 1/2 1/7
Thence West
- 49 44 Set Stone for 1/4 Sec corner bet Sec 8 1/2 1/7
Thence South through Sec 17
- 49 59 Set Temporary Center Sec 17
- 89 37 Intersect the 1/4 Sec corner bet Sec 17 1/2 1/0

The Corner to Sec 16=17=20 1/2 1/1
Thence North bet Sec 16 1/2 1/7
Per 20° E

- 40 11 Set Temporary 1/4 Sec Corner bet Sec 16 1/2 1/7
Thence West through Sec 17
- 49 82 Intersect Line N 1/2 S line 15 lbs South of first Center Stake
- 50 65 Intersect West Boundary at the telecon bet Sec 17 1/2 1/8

The Corner to Sec 17=18=19 1/2 1/0
Thence North

- 40 45 Set Stone 5 x 6 x 21 inches for 1/4 Sec corner
Thence East
- 40 33 Set Stone 6 x 8 x 10 inches for Center Sec 17

W. Kimbrell County Surveyor