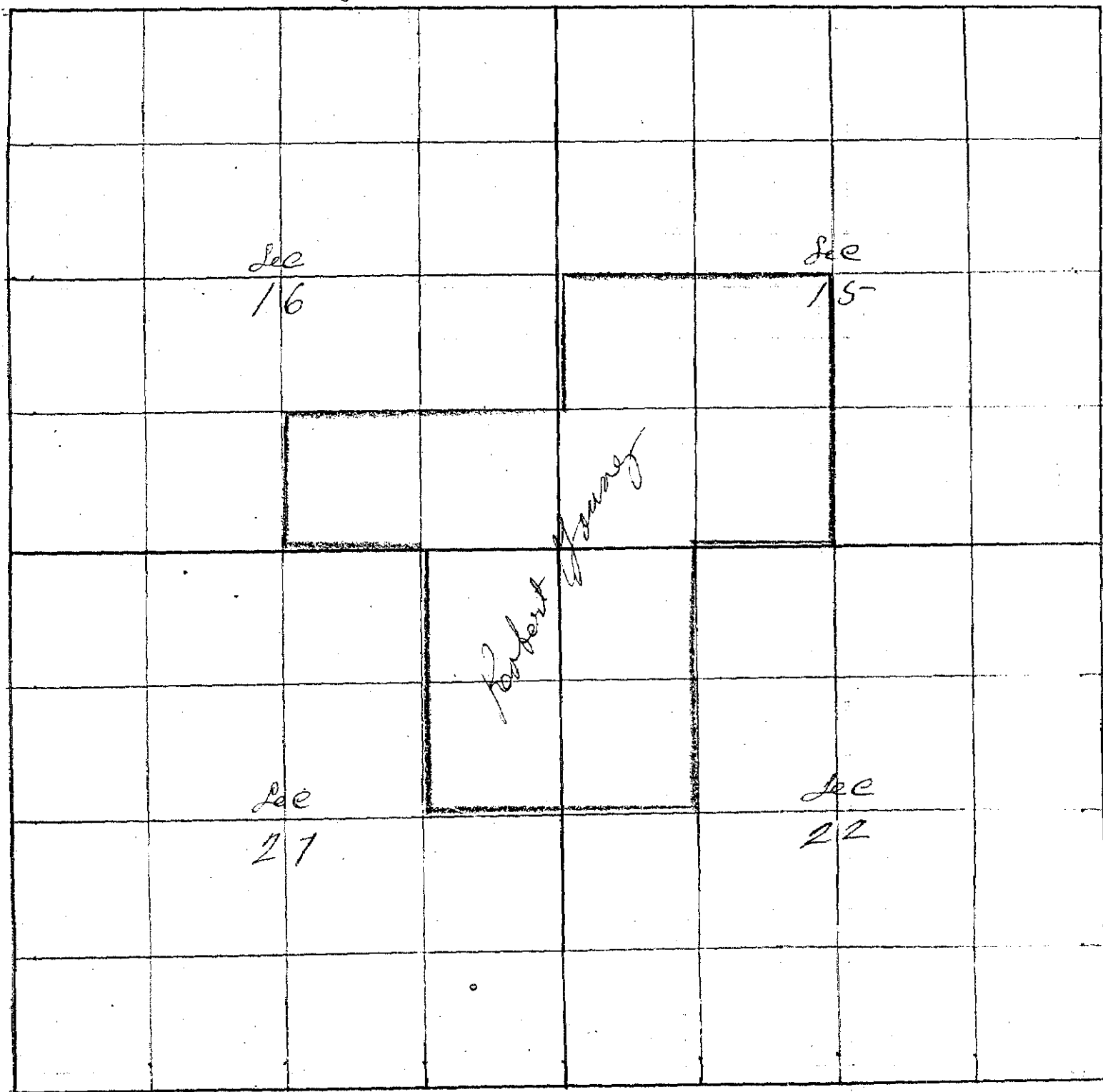


Robert Young Dec 4th 1888

CHAINS. LRS.



I Commenced at the corner to Sec 15=16=21 & 22
a Post from which

- a Pine 16 inches dia. $N 14^{\circ} W 72$ lks dist
- " 24 " " " $N 32^{\circ} E 68$ " "
- " 20 " " " $S 55^{\circ} E 95$ " "
- " 30 " " " $S 60^{\circ} W 58$ " "

Thence North bet Sec 15 & 16
 $Var 20^{\circ} E$

20 00 Set Temporary $\frac{1}{8}$ Corner

40 00 Set Temporary $\frac{1}{4}$ Sec Corner The original corner being on a c.

82 05 Intersect 20 & lks East of corner to Sec 9=10=15 & 16
from which

- a Pine 14 inches dia. $N 61^{\circ} E 27$ lks dist.
- " 12 " " " $N 28^{\circ} W 33$ " "
- " 20 " " " $S 19^{\circ} W 70$ " "
- " 20 " " " $S 6^{\circ} E 76$ " "

Thence $S 1^{\circ} 26' E$ on True line bet Sec 15 & 16

41 02 $\frac{1}{2}$ Set Volcanic Rock 7x7x20 inches for $\frac{1}{4}$ Sec corner bet Sec 15 & 16

- 61 53 Set Post for 1/4 corner
from which
a Pine 12 inches dia. bcs N58° W 121 lks dist.
Pine 12 " " " S 1° E 95 " "
- 82 05 The corner to Sec 15-16-21 & 22
Thence East to Sec 15 & 22
- 40 50 The 1/4 Sec corner bet Sec 15 & 22
Thence West
- 20 25 Set Post for 1/8 corner
from which
a Pine 12 inches dia. bcs S51° W 162 lks dist.
a Sawrack & " " " N47° E 86 " "
- The 1/4 Sec corner bet Sec 15 & 16
Thence East through Sec 15 - var 20° E
- 40 50 Set Temporary center Sec 15
- 80 50 found no 1/4 Sec corner Set Temporary Closing Corner
I then proceeded to the corner to Sec 14-15-22 & 23
a Post from which
a Pine 24 inches dia. bcs S 7° E 320 lks dist.
Thence North bet Sec 14 & 15 -
var 20° E
- 40 00 Set Temporary 1/4 Sec corner
- 80 50 found no Sec corner
Thence North bet Sec 10 & 11
var 20° E
- 1 00 Grandeound River 75 lks across Course N. E.
- 48 06 Intersect 101 lks East of the 1/4 Sec corner bet Sec 10 & 11
Thence S 28° E
- 82 02 Set Initial 1/4 Sec Post. 150 lks East and 24 lks North of Closing
Corner on E & W line
The E & W line through Sec 15 would be as follows
- 81 50 Intersect East Boundary Sec 15 24 lks South of the 1/4 Sec
Corner between Sec 14 & 15
Thence S 89° 50' W on True line through Sec 15
- The 1/4 Sec corner bet Sec 10 & 15
from which
a Pine 24 inch dia. bcs S 68° E 205 lks dist.
" 14 " " " North 155 " "

CHAINS LKS Thence South through Sec 15 var 20° E
40 83 Intersect E & W line 21 1/2 m East of first State Center

81 85 Intersect South Boundary 192 M West of 1/4 Sec Corner
bet Sec 15 & 22 a Pine 18 inches dia N 10° W 99 lks
" 24 " " S 7° W 99 "

Thence North 1° 23' W on true line
40 92 Set Post marked C.S. for Center Sec 15

The 1/4 Sec corner bet Sec 21 & 22

from which
a Pine 14 inches dia. bears N 88° E 35 M dist.
fir 12 " " " S 13° W 76 " "

Thence East through Sec 22

80 83 Intersect East Boundary 77 M South of 1/4 Sec Corner bet Sec 21 & 22

from which a Pine
a Pine 22 inch dia. bears N 74° E 141 M dist.
" 30 " " " N 65° W 370 " "

Thence S 89° 27' W on true line

60 62 Set Post for 1/16 corner in Center of Sec 22

from which
a Pine 14 inch dia. bears N 13° E 68 M dist.
sawrack 8 " " " S 7° E 72 " "

The Corner to Sec 15 = 16 = 21 & 22

Thence West bet Sec 16 & 21 var 20° E

20 00 Set temporary 1/8 corner

40 52 The 1/4 Sec corner bet Sec 16 & 21

Thence East

20 26 Set Post for 1/8 corner

from which
a fir 7 inches dia bears N 85° W 109 lks dist
" 7 " " " S 67° E 125 " "

40 52 The corner bet Sec 15 & 16 & 21 & 23

The 1/4 Sec corner bet Sec 21 & 16

from which
a Pine 24 inches dia bears S 78° E 25 lks dist
" 20 " " " N 31° E 83 " dist

Thence North through Sec 16

var 20° E

82 29 Intersect North Boundary Sec 16

600 M East of 1/4 Sec corner bet Sec 9 & 16

Township 3 South

Range 36 East

Union County, Oregon.

from which

a Pine 24 inches dia. bears N 5° W 55 lks dist.

" 20 " " " S 34° E 66 " "

thence South 4° 18' E on true line

6171 Set Post for 1/16 corner in Centre S 1/2 Sec 16

from which

a Pine 6 inches dia. bears S 2 1/2° W 26 lks dist.

J. W. Tompkins County Surveyor