

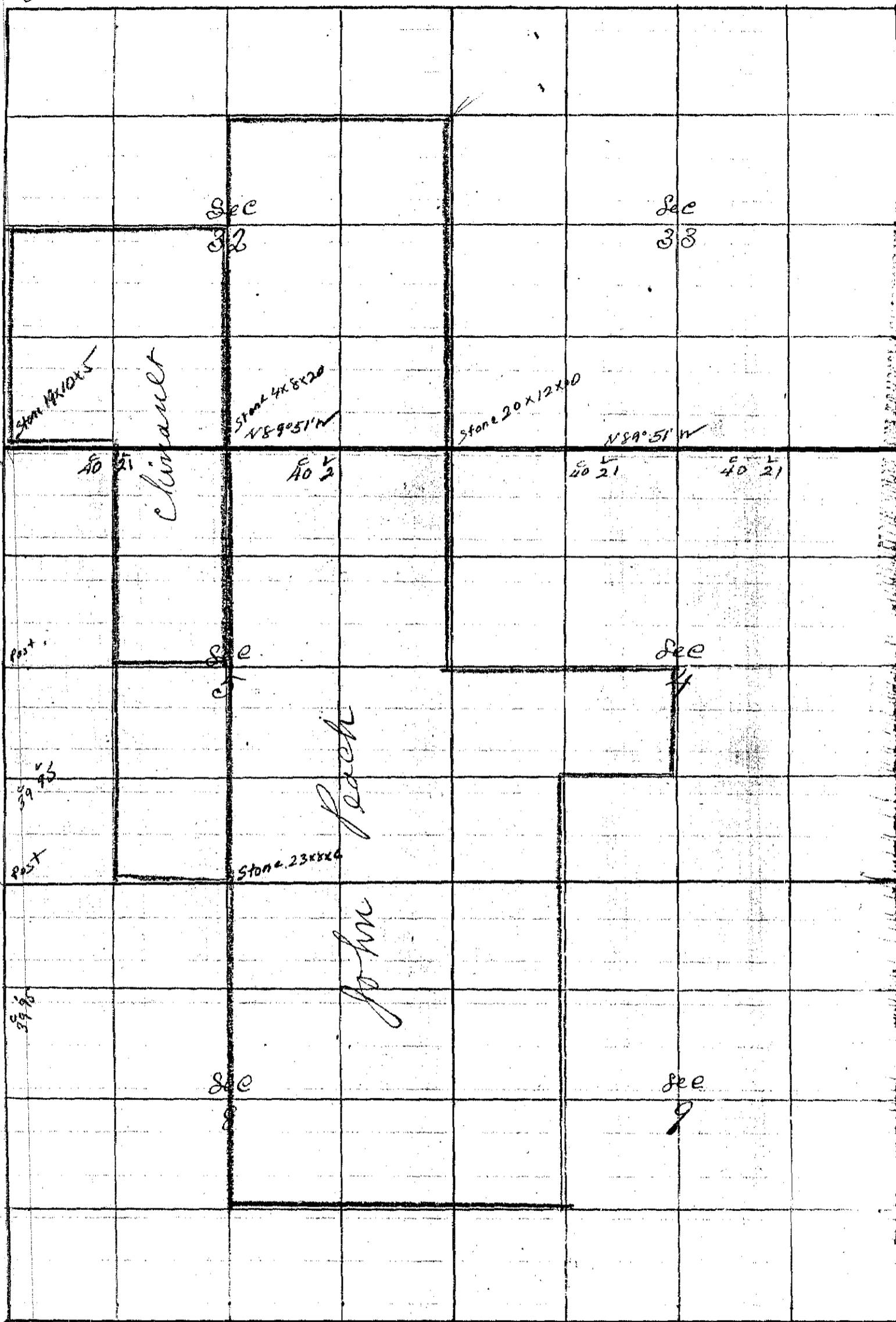
98
1888

No. 50

Township 2 & 3 South Range 39 East W. M. Union County, Oregon.

John Reach October the 1st 1888

CHAINS. LKS.



I Commenced at the Corner to Sec. 5-6-31 & 32 on Township line bet T 2 & 3 S 16 R 39 E.

Thence East bet Sec 5 & 32
Var 25° E

4 00 Shough on Grand round river course N 5° E
offset 100 lbs North

17 00 Let Back 100 lbs South on line
Thence East on offset

CHAINS.	LINKS.	
		Hence North bet Sec 7 & 8
39	95	Set Post for Corner to Sec 5-6-7 & 8 Hence North bet Sec 5 & 6
39	95	Set Post in John Carr's Garden for 1/4 Sec Cor bet Sec 5 & 6 The 1/4 Sec Corner bet Sec 7 & 8 Hence South bet Sec 7 & 8 Per 20° E
20	00	Set Temporary 1/8 Corner
39	77	The corner to Sec 7-8-17 & 18 in Center of County Road. Hence North
19	88 1/2	Set Post for 1/8 Corner
39	77	The 1/4 Sec cor bet Sec 7 & 8. I retraced the line bet Sec 6 & 7 and find it to be 7820 chains 20 lks over US field Notes The Corner to Sec 5-6-7 & 8 Hence East bet Sec 5 & 8 Per 20° E
20	00	Set Temporary 1/8 corner
40	00	I found The Old 1/4 Sec corner Post decayed Reestablished by planting a Stone 23 x 8 x 6 for 1/4 Sec Corner bet 5 & 8 Hence West
20	00	Set Stone 13 x 7 x 6 for 1/8 Corner The 1/4 Sec corner bet Sec 5 & 8 Hence East Per 20° E
40	10	found no Sec Corner Set Temporary cor to Sec 4-5-8 & 9 Hence East Per 20° E
40	35	The 1/4 Sec Corner bet Sec 4 & 9 Post decayed deposited Point of Old Stake and Drove New Stake 3 inches in diameter and 30 inches long in Old Mound along Side of Point of Old Stake The corner being in a Meadow I drove The Stake down Level with top of Ground Hence East bet Sec 4 & 9
40	00	found no Sec Corner Set Temporary cor to Sec 3-4-9 & 10 Hence East bet Sec 3 & 10 Per 20° E
40	13	Rail fence Course N & S

CHAINS	LBS.	
46	65	Grande Round river 119 Mts across Course South
79	45	The Corner to Sec 2=3=10 & 11 Thence South bet Sec 10 & 11 Var 20° E
15	11	Grande Round River 140 Mts across Course East
40	18	The 1/4 Sec corner bet Sec 10 & 11 The Corner to Sec 3=4=33 & 34 Thence South bet Sec 3 & 4 Var 20° E
1	05	Grande Round River 177 Mts across Course East
39	66	found no 1/4 Sec corner Set Temporary 1/4 Sec corner bet 3 & 4
79	66	Intersect E & W line at first Temporary Cor. Thence South bet Sec 9 & 10 Var 20° E
		But found no corner until I intersect E & W line at the corner to Sec 27=28=33 & 34 The distance corresponding with U.S. Field Notes Thence West bet Sec 28 & 33 Var 20° E
80	00	The Corner to Sec 28=29=32 & 33 Thence North bet Sec 28 & 29
40	00	found no 1/4 Sec corner
80	50	Rail fence on South Side County Road
81	80	wire fence Continue North and find no 1/4 Sec or Sec corner as per U.S. Field Notes 3 miles and Set Temporary Corner to Sec 8=9=16 & 17 Thence North bet Sec 8 & 9 Var 20° E
40	00	found no 1/4 Sec corner Set Temporary 1/4 Sec corner
80	00	Intersect E & W line 25 Mts East of 1st Temporary Station Thence North bet Sec 4 & 5 Var 20° E
40	00	Set Temporary 1/4 Sec corner
78	82	Intersect North Boundary of Township at the corner to Sec 4=5=32 & 33 Thence South bet Sec 4 & 5
39	75	Set Stone 8x12x24 inches for 1/4 Sec corner bet Sec 4 & 5
79	65	Set Stone 19x12x8 inches for corner to Sec 4=5=8 & 9

RECORD OF SURVEY

102
1888

Township 3 South

Range 39 East

Union County, Oregon.

CHAINS. LKS.

Thence South bet Sec 8 & 9
Var 20° E

39 90 Set Stone 20 x 10 x 7 inches for 1/4 Sec Corner bet Sec 8 & 9

59 85 Set Stone 23 x 10 x 5 for 1/8 corner

79 80 The Corner to Sec 8 = 9 = 16 & 17

The Corner to Sec 7 = 8 = 17 & 18

Thence East bet Sec 8 & 17

Var 20° E

40 20 found no 1/4 Sec Corner Set Temporary 1/4 Sec on

80 40 The Corner to Sec 8 = 9 = 16 & 17

Thence East

20 10 Set Temporary 1/8 corner

80 42 found no Corner to Sec 9 = 10 = 15 & 16

Thence East

80 65 The Corner to Sec 10 = 11 = 14 & 15

Making an excess of 47 lks
and a falling of 16 lks to each mile

The 1/4 Sec corner bet Sec 3 & 4

Thence West through Sec 4

Var 20° E

40 21 Set Temporary Center Sec 4

80 30 The 1/4 Sec Corner bet Sec 4 & 5

The 1/4 Sec corner bet Sec 4 & 9

Thence North through Sec 4

20 00 Set Temporary 1/6 corner

39 87 intersect E & W line at Center Sec 4 Set Stone 6 x 12 x 22
for Center Sec 4

Thence South

19 93 Set Stone 6 x 16 x 21 for 1/6 corner in center S 1/2 Sec 4

Thence West

20 09 Set Stone 6 x 10 x 26 for 1/6 corner in center S W 1/4 Sec 4

Thence South

19 96 Set Stone 8 x 6 x 24 in for 1/8 corner on South
Boundary S W 1/4 Sec 4

The North Body S W 1/4 Sec 4

Set Stone 6 x 6 x 15 for 1/6 corner in center W 1/2

- The 1/4 sec corner for Sec 5 1/2 8
 Thence South through Sec 8 Var 20° E
- 40 00 Set temporary center Sec 8
 60 00 Set temporary 1/16 corner
 80 05 Intersect South Boundary Sec 8 7 1/2 Sec East of 1/4 Sec corner for Sec 8 1/2 17
- The 1/4 Sec Corner for Sec 8 1/2 9
 Thence West through Sec 8 Var 20° E
- 40 28 Intersect True N 1/2 S line 3 1/2 Sec South of first Stake for center
 80 37 Intersect West Boundary at 1/4 Sec corner for Sec 7 1/2 9
 Thence East
- 40 09 Set Stone 6 x 12 x 18 for Center Sec 8
- The 1/8 Corner on West Boundary S W 1/4 Sec 8
 Thence East Var 20° E
- 40 27 Set Stone 7 x 12 x 23 inches for 1/16 corner in Center S 1/2 Sec 8
 80 42 Intersect East Boundary Sec 8 at 1/8 corner on E Bdy S E 1/4 Sec 8
 Set Stone 6 x 10 x 23 inches for 1/8 corner
 Thence East
- 20 25 Set Stone 6 x 13 x 20 inches for 1/16 corner in Center S W 1/4 Sec 9
- The 1/4 Sec Corner for Sec 5 1/2 3 E
 Thence South through Sec 5
 Var 20° E
- 3 70 Slough of Grande Round River 148 1/2 Sec across Course East
 39 36 Set temporary center Sec 5
 77 73 Intersect South Boundary at 1/4 Sec corner for Sec 5 1/2 8
- The 1/4 Sec Corner for Sec 5 1/2 6
 Thence East through Sec 5 Var 20° E
- 20 00 Set temporary 1/16 corner
 40 07 Intersect N 1/2 S line at first Stake for center
 80 38 Intersect East Boundary at 1/4 Sec corner for Sec 4 1/2 5
 Thence West
- 40 30 Set Stone 6 x 10 x 18 inches for center Sec 5
 60 30 Set Stone 7 x 12 x 18 for 1/16 corner in Center W 1/2 Sec 5
- The 1/8 corner on South Boundary S W 1/4 Sec 5
 Thence North through W 1/2 Sec 5 Var 20° E
- 39 82 Center W 1/2
 78 30 Slough 127 1/2 Sec across course N 8
 74 57 1/2 corner on N Bdy N W 1/4 Sec 5 on left bank of Slough

Township 2 S 3 South Range 39 East

Union County, Oregon

CHAIN
LKS

The corner to Sec 5-6-31 & 32
thence North 64 Sec 31 & 32
bear 20° E

40 61 Intersect 1/4 Sec corner bet Sec 31 & 32 3.1/2 m west of corner
Post decayed I Planted a Stone 18 x 10 x 4 inch for 1/4 Sec cor bet Sec 31 & 32

80 00 found no Sec corner
thence North bet Sec 29 & 30

40 00 found no 1/4 Sec corner

80 65 I found a Stone Said to be Placed Here by m Austin
while County Surveyor

The corner to Sec 20-21-28 & 29
thence South bet Sec 28 & 29
bear 20° E

40 50 found no 1/4 Sec corner

80 16 Intersect 15 m East of corner to Sec 28-29-32 & 33

The corner to Sec 4-5-32 & 33
thence North bet Sec 32 & 33
bear 20° E

35 71 Grande Round River 190 m across course S. E.

40 79 The 1/4 Sec corner bet Sec 32 & 33 Post decayed
and I Planted a Stone 17 x 12 x 8 inch for 1/4 Sec cor bet Sec 32 & 33

60 79 Set temporary 1/8 corner

69 79 Intersect ^{Right Bank of} Grande Round River course South

81 47 Intersect 20 m west of corner to Sec 28-29-32 & 33
thence South 17' won't true line

20 54 Set Stone 19 x 14 x 7 inches for 1/8 corner on
East Boundary N 8 1/4 Sec 32

The corner to Sec 28-29-32 & 33
thence West bet Sec 29 & 32
bear 20° E

34 92 found no 1/4 Sec corner Set temporary 1/4 Sec corner

79 84 found no Sec corner Set temporary corner to Sec 29-30-31 & 32
thence West bet Sec 30 & 31
bear 20° E

40 50 found no 1/4 Sec corner

78 09 Intersect West Boundary of Township making
a deficiency of 66 m as per U.S. Field Notes
I there have a falling of 16 1/2 m East to each 1/2 mile

Township 2 1/2 South

Range 39 East

Union County, Oregon.

CHAINS
LINKS

The 1/4 Sec corner set Sec 5 1/2 32
Thence North through Sec 32
var 20° E

40 50 Set temporary center Sec 32

60 50 Set temporary 1/16 corner

81 45 Intersect North Boundary Sec 32 40.116 East of 1/4 Sec corner 29 1/2 32

The 1/4 Sec corner set Sec 32 1/2 33

Thence West through Sec 32 on Offset on 590 1/2 North
var 20°

39 69 Intersect N 1/2 S line

Set Back South 590 1/2 On line

74 19 Grande Round river 104 1/2 across course N E

80 19 Intersect West Boundary Sec 32 at the 1/4 Sec corner set Sec 31 1/2 32

Thence East

40 50 Set Stone 6 x 12 x 18 for center Sec 32

Thence North

20 50 Set Stone 5 x 12 x 19 for 1/16 corner in Center N 1/2 Sec 32

J. W. Keimrell County Surveyor